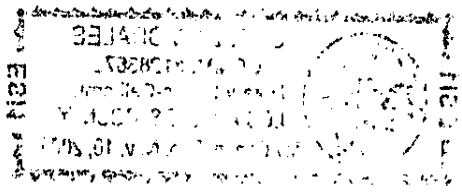


UNOFFICIAL COPY

F 4

Property of Cook County Clerk's Office



UNOFFICIAL COPY

0010155497

Page 2 of 2

EXHIBIT 'A'

950501007

LOT 13 IN BLOCK 12 IN PARKHOLME RESUBDIVISION
OF BLOCK 14 IN GRANT LAND ASSOCIATION RESUBDIVISION OF
SECTION 21, TOWNSHIP 39 NORTH, RANGE
13 EAST OF THE THIRD PRINCIPAL MERIDIAN, IN COOK COUNTY,
ILLINOIS

Property of Cook County Clerk's Office

UNOFFICIAL COPY

Property of Cook County Clerk's Office