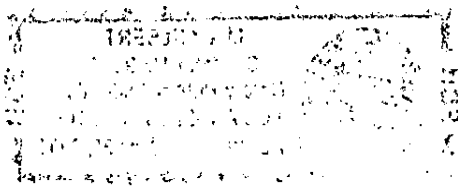


UNOFFICIAL COPY

Property of Cook County Clerk's Office



0010807645

UNOFFICIAL COPY

EXHIBIT 'A'

6200051680

THE SOUTH 1/2 OF LOT 9 AND ALL OF LOTS 10, 11, 12, 13 AND 14 IN BLOCK 19 IN H.W. ELMORE'S KEDZIE AVENUE RIDGE, A SUBDIVISION OF THE NORTH EAST 1/4 AND THE SOUTHEAST 1/4 OF SECTION 23, TOWNSHIP 36 NORTH, RANGE 13, EAST OF THE THIRD PRINCIPAL MERIDIAN, LYING SOUTH OF THE INDIAN BOUNDARY LINE; IN COOK COUNTY, ILLINOIS.

Property of Cook County Clerk's Office

UNOFFICIAL COPY

Property of Cook County Clerk's Office