

UNOFFICIAL COPY

04/11/2002 14:50

18476696271

V3 HUNTLEY

PAGE 01/01

0020425570

3130/0074 38 001 Page 1 of 6

2002-04-12 12:02:42

Cook County Recorder

31.00



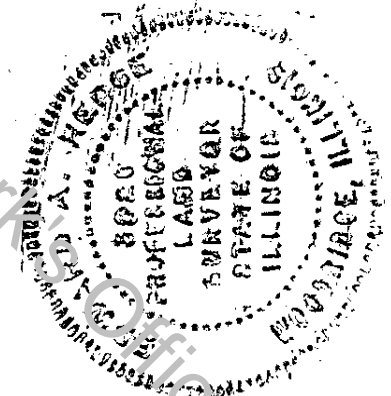
0020425570

April 11, 2002

I, Edward A. Hedge, Illinois Professional Land Surveyor No. 3026 do hereby authorize a representative of V3 Consultants, Ltd. to file with the Cook County Recorders' Office the Certificate of Correction relating to the Final Plat of Subdivision of Deer Chase Estates, being a subdivision of part of Section 29, Township 36 North, Range 12 East of the Third Principal Meridian.

Edward A. Hedge

Edward A. Hedge
Professional Land Surveyor No. 3026
V3 Consultants, Ltd.



RECORDED
DATE 4/12/02
OK BY [Signature]

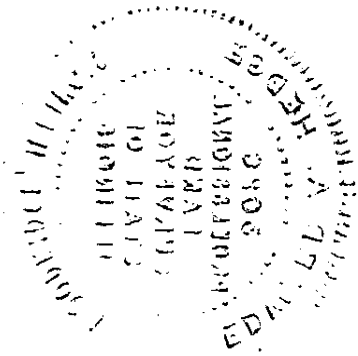
F	30	A
P		P
T		V
R		

UNOFFICIAL COPY

Case No. 13-0000

Date Filed 11/11/13

Property of Cook County Clerk's Office





CONSULTANTS

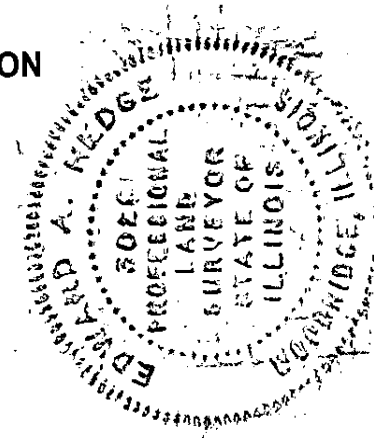
UNOFFICIAL COPY

Engineers	7325 Janes Avenue
Scientists	Suite 100
Surveyors	Woodridge, IL 60517
	630.724.9200
	Fax: 630.724.9202
	www.v3consultants.com

AFFIDAVIT AND CERTIFICATION OF CORRECTION

P.I.N. 27-29-401-011
 27-29-401-012
 27-29-401-004
 27-29-403-001

STATE OF ILLINOIS)
) SS
 COUNTY OF DUPAGE)



THIS IS TO CERTIFY THAT I, EDWARD A. HEDGE, ILLINOIS PROFESSIONAL LAND SURVEYOR NO. 3026, AM CORRECTING SCRIVENER'S ERRORS FOR THE FOLLOWING RECORDED PLAT FOR WHICH I AM THE SURVEYOR OF RECORD: **FINAL PLAT OF SUBDIVISION OF OFER CHASE ESTATES**, BEING A SUBDIVISION OF PART OF SECTION 29, TOWNSHIP 36 NORTH, RANGE 12 EAST OF THE THIRD PRINCIPAL MERIDIAN, IN COOK COUNTY, ILLINOIS, RECORDED AS DOCUMENT ~~NO.~~ 20010921545, IN THE COOK COUNTY RECORDERS OFFICE.

I HEREBY ATTEST TO THE FOLLOWING CORRECTIONS:

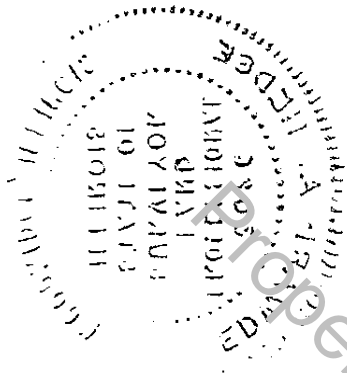
THE RECORDED LOCATIONS, DIMENSIONS, AND AREAS OF LOTS 24, 25, 26, 27, 28, 29, 30, AND 31 ARE HEREBY AMENDED, AS SHOWN ON THE ATTACHED EXHIBITS, TO REFLECT THE INTENT OF THE DEVELOPER, ENGINEER, AND SURVEYOR.

BY: Edward A. Hedge
 EDWARD A. HEDGE, P.L.S., NO. 3026
 V3 CONSULTANTS, LTD.

DATED: APRIL 11, 2002

PREPARED BY: V3 CONSULTANTS, LTD.
 7325 JANES AVENUE, SUITE 130
 WOODRIDGE, IL 60517
 (630) 724-9200

UNOFFICIAL COPY



STATE OF ILLINOIS

DEPARTMENT OF PUBLIC SAFETY

Property of Cook County Clerk's Office

UNOFFICIAL COPY

0020425570

Page 3 of 6

PLEASE MAIL TO: V3 CONSULTANTS, LTD.
7325 JANES AVENUE, SUITE 130
WOODRIDGE, IL 60517
(630) 724-9200

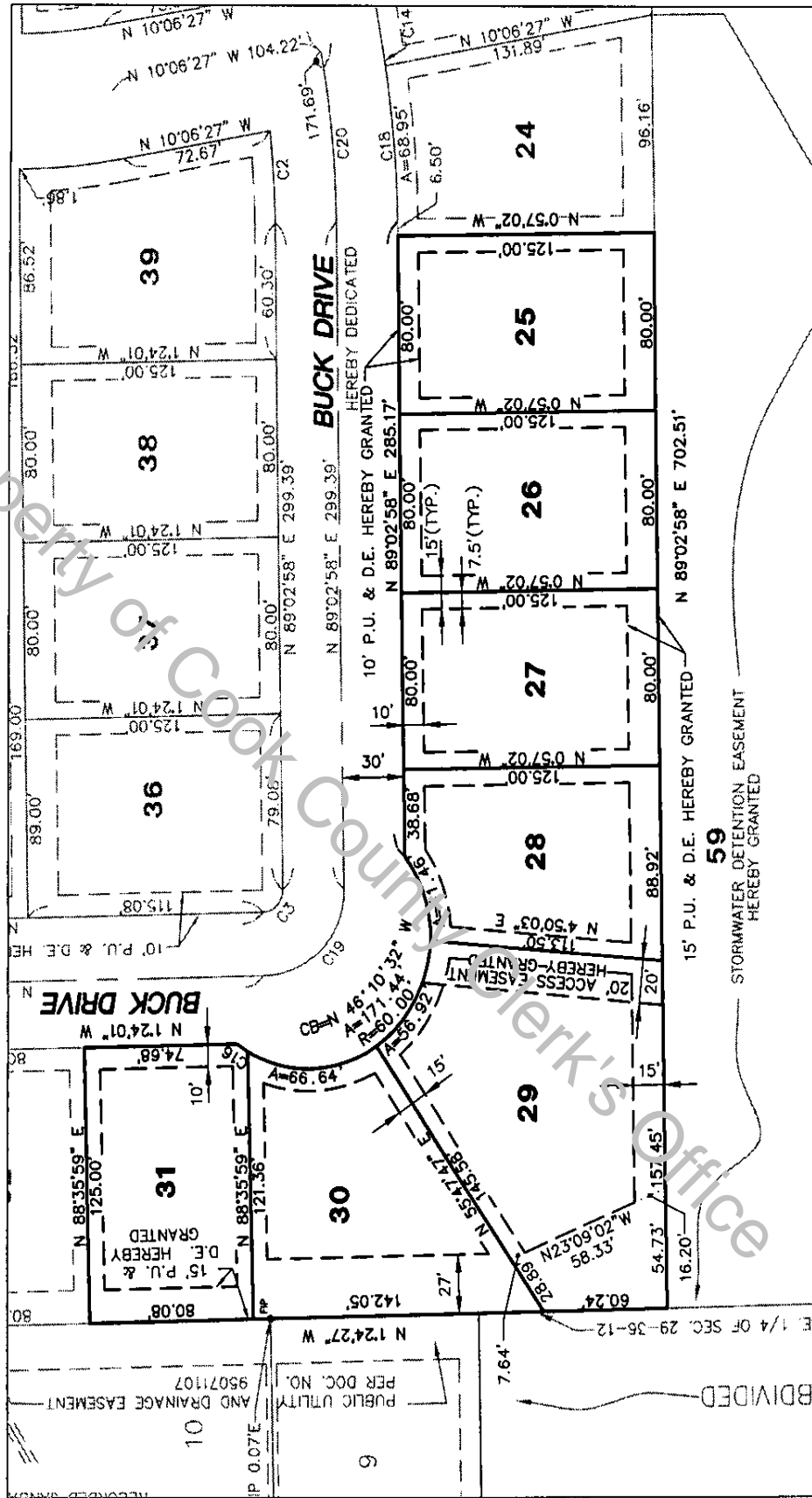
P.I.N. 27-29-401-011
27-29-401-012
27-29-401-004
27-29-403-001

P. 2 of 5

Property of Cook County Clerk's Office

DEER CHASE ESTATES
(LOTS 25 THROUGH 31 AS INCORRECTLY RECORDED
AS DOCUMENT R2001-0921545)

HEREBY MADE VOID



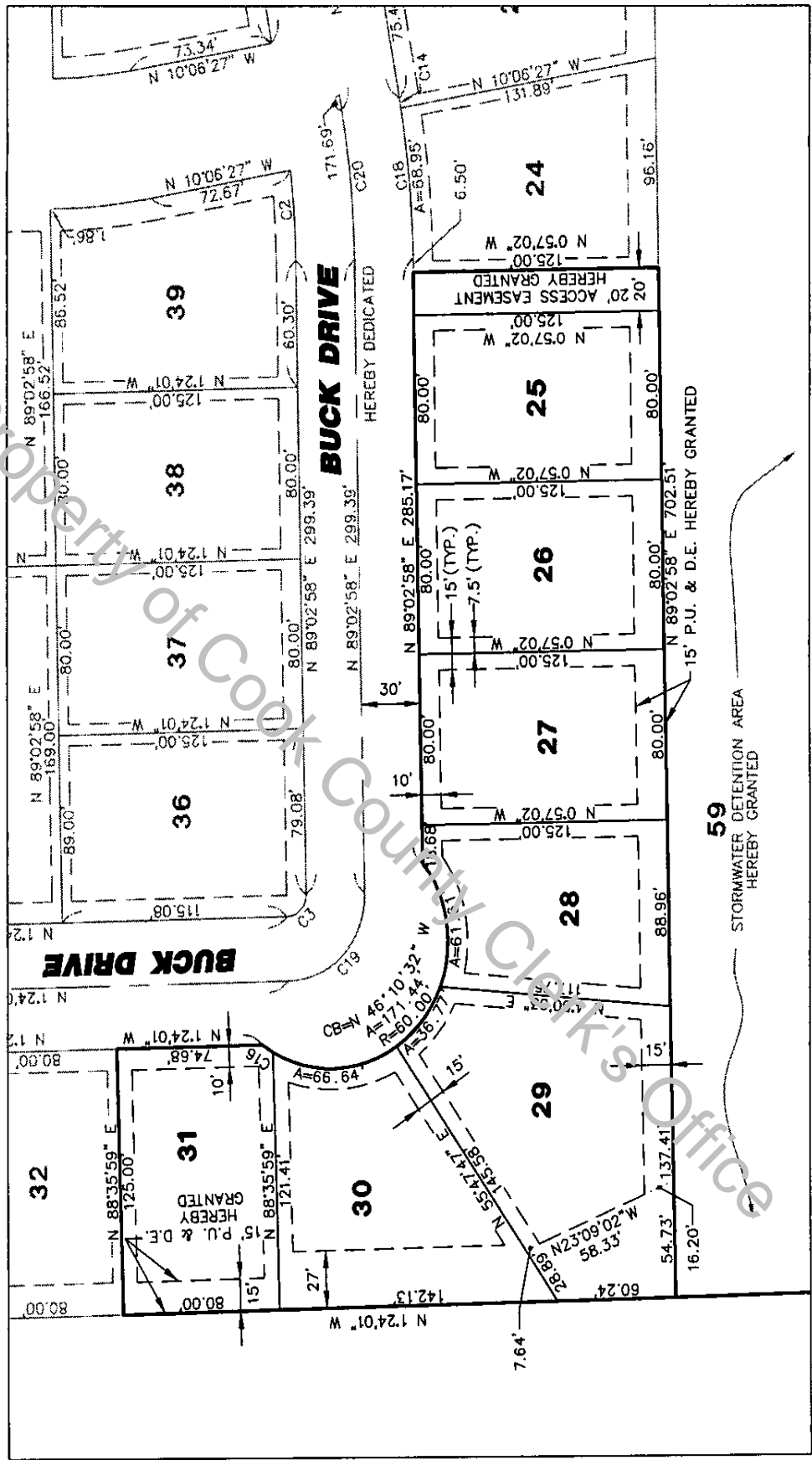
Engineers
Scientists
Surveyors

7325 Janes Avenue, Suite 100
Woodridge, IL 60517
630.724.9200 voice
630.724.9202 fax
v3consultants.com

**AFFIDAVIT AND CERTIFICATE
OF CORRECTION**
FOR
DEER CHASE ESTATES

PROJECT NO. 00111
SHEET: 3 of 5
SCALE: 1"=80'
DATE: APRIL 9, 2002

DEER CHASE ESTATES
(LOTS 25 THROUGH 31 AS ENGINEERED, CONSTRUCTED, AND
INTENDED TO BE RECORDED)
HEREBY CORRECTED & AMENDED



Engineers
Scientists
Surveyors

7325 Janes Avenue, Suite 100
Woodridge, IL 60517
630.724.8200 voice
630.724.8202 fax
v3consultants.com

AFFIDAVIT AND CERTIFICATE
OF CORRECTION
FOR
DEER CHASE ESTATES

PROJECT NO. 00111
SHEET: 4 of 5
SCALE: 1"=80'
DATE: APRIL 9, 2002



**Engineers
Scientists
Surveyors**
7325 Janes Avenue, Suite 100
Woodridge, IL 60517
630.724.8200 fax
630.724.8202 fax
Vconsultants.com

**AFFIDAVIT AND CERTIFICATE
OF CORRECTION**
FOR
DEER CHASE ESTATES

PROJECT NO. 00111
SHEET: 5 of 5
SCALE: 1"=80'
DATE: APRIL 9, 2002

AREA TABLE

LOT	INCORRECT AND VOID		CORRECTED AND AMENDED	
	Sq. Ft.	ACRES	Sq. Ft.	ACRES
25	10000	0.2296	10000	0.2296
26	10000	0.2296	10000	0.2296
27	10000	0.2296	10000	0.2296
28	10000	0.2296	9794	0.2248
29	17311	0.3975	15018	0.3448
30	12140	0.2787	12150	0.2789
31	10000	0.2296	9990	0.2293

CURVE DATA

INCORRECT AND VOID				CORRECTED AND AMENDED			
CURVE	CHORD BEARING	RADIUS	ARC LENGTH	CHORD BEARING	RADIUS	ARC LENGTH	
C16	S 32°34'08" W	60.000'	6.522'	S 32°36'52" W	60.000'	6.43'	

PROPERTY OF COOK COUNTY

UNOFFICIAL COPY

20425570

April 11, 2002

I, Edward A. Hedge Illinois Professional Land Surveyor No. 3026 do hereby authorize a representative of V3 Consultants, Ltd. to file with the Cook County Recorders' Office the Certificate of Correction relating to the Final Plat of Subdivision of Deer Chase Estates, being a subdivision of part of Section 29, Township 36 North, Range 12 East of the Third Principal Meridian.

Edward A. Hedge

Edward A. Hedge
Professional Land Surveyor No. 3026
V3 Consultants, Ltd.



2/12

F	31	A
P.		P
T		V
I	M	



CONSULTANTS

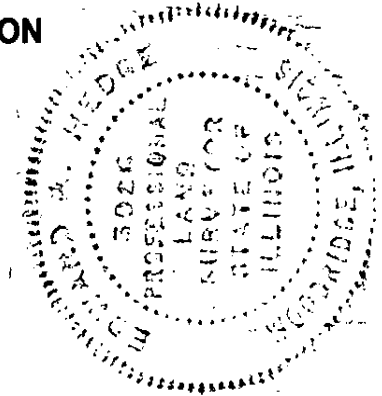
UNOFFICIAL COPY

Engineers	7325 Janes Avenue
Scientists	Suite 100
Surveyors	Woodridge, IL 60517
	630.724.9200
	Fax: 630.724.9202
	www.v3consultants.com

AFFIDAVIT AND CERTIFICATION OF CORRECTION

P.I.N. 27-29-401-011
 27-29-401-012
 27-29-401-004
 27-29-403-001

STATE OF ILLINOIS)
) SS
 COUNTY OF DUPAGE)



THIS IS TO CERTIFY THAT I, EDWARD A. HEDGE, ILLINOIS PROFESSIONAL LAND SURVEYOR NO. 3026, AM CORRECTING SCRIVENER'S ERRORS FOR THE FOLLOWING RECORDED PLAT FOR WHICH I AM THE SURVEYOR OF RECORD: **FINAL PLAT OF SUBDIVISION OF DEER CHASE ESTATES**, BEING A SUBDIVISION OF PART OF SECTION 29, TOWNSHIP 36 NORTH, RANGE 12 EAST OF THE THIRD PRINCIPAL MERIDIAN, IN COOK COUNTY, ILLINOIS, RECORDED AS DOCUMENT ~~27~~ 20010921545, IN THE COOK COUNTY RECORDERS OFFICE.

I HEREBY ATTEST TO THE FOLLOWING CORRECTIONS:

THE RECORDED LOCATIONS, DIMENSIONS, AND AREAS OF LOTS 24, 25, 26, 27, 28, 29, 30, AND 31 ARE HEREBY AMENDED, AS SHOWN ON THE ATTACHED EXHIBITS, TO REFLECT THE INTENT OF THE DEVELOPER, ENGINEER, AND SURVEYOR.

BY: Edward A. Hedge
 EDWARD A. HEDGE, P.L.S., NO. 3026
 V3 CONSULTANTS, LTD.

DATED: APRIL 11, 2002

PREPARED BY: V3 CONSULTANTS, LTD.
 7325 JANES AVENUE, SUITE 130
 WOODRIDGE, IL 60517
 (630) 724-9200

UNOFFICIAL COPY

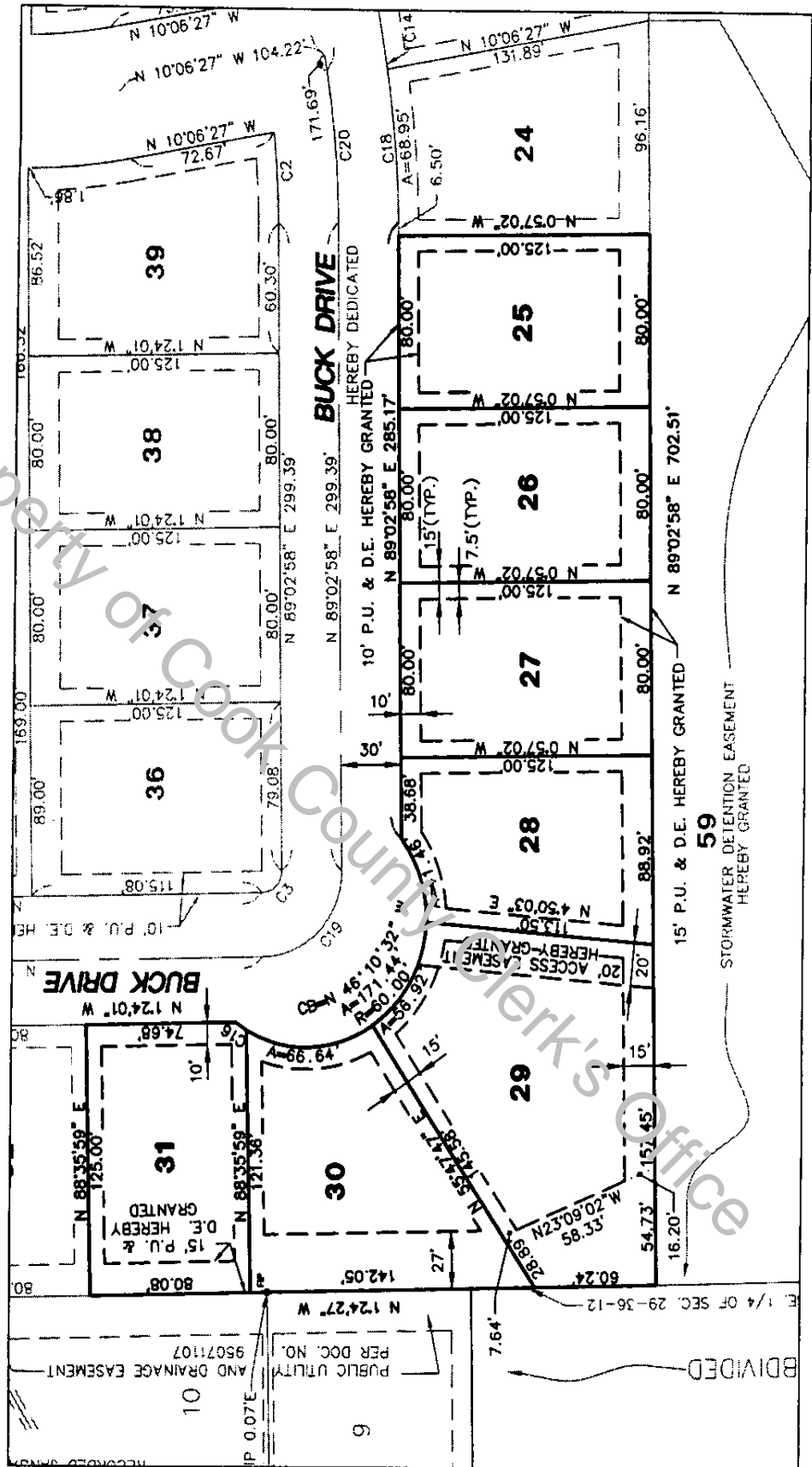
PLEASE MAIL TO: V3 CONSULTANTS, LTD.
7325 JANES AVENUE, SUITE 130
WOODRIDGE, IL 60517
(630) 724-9200

P.I.N. 27-29-401-011
27-29-401-012
27-29-401-004
27-29-403-001

P. 2 of 5

Property of Cook County Clerk's Office

DEER CHASE ESTATES
(LOTS 25 THROUGH 31 AS INCORRECTLY RECORDED
AS DOCUMENT R2001-0921545)
HEREBY MADE VOID



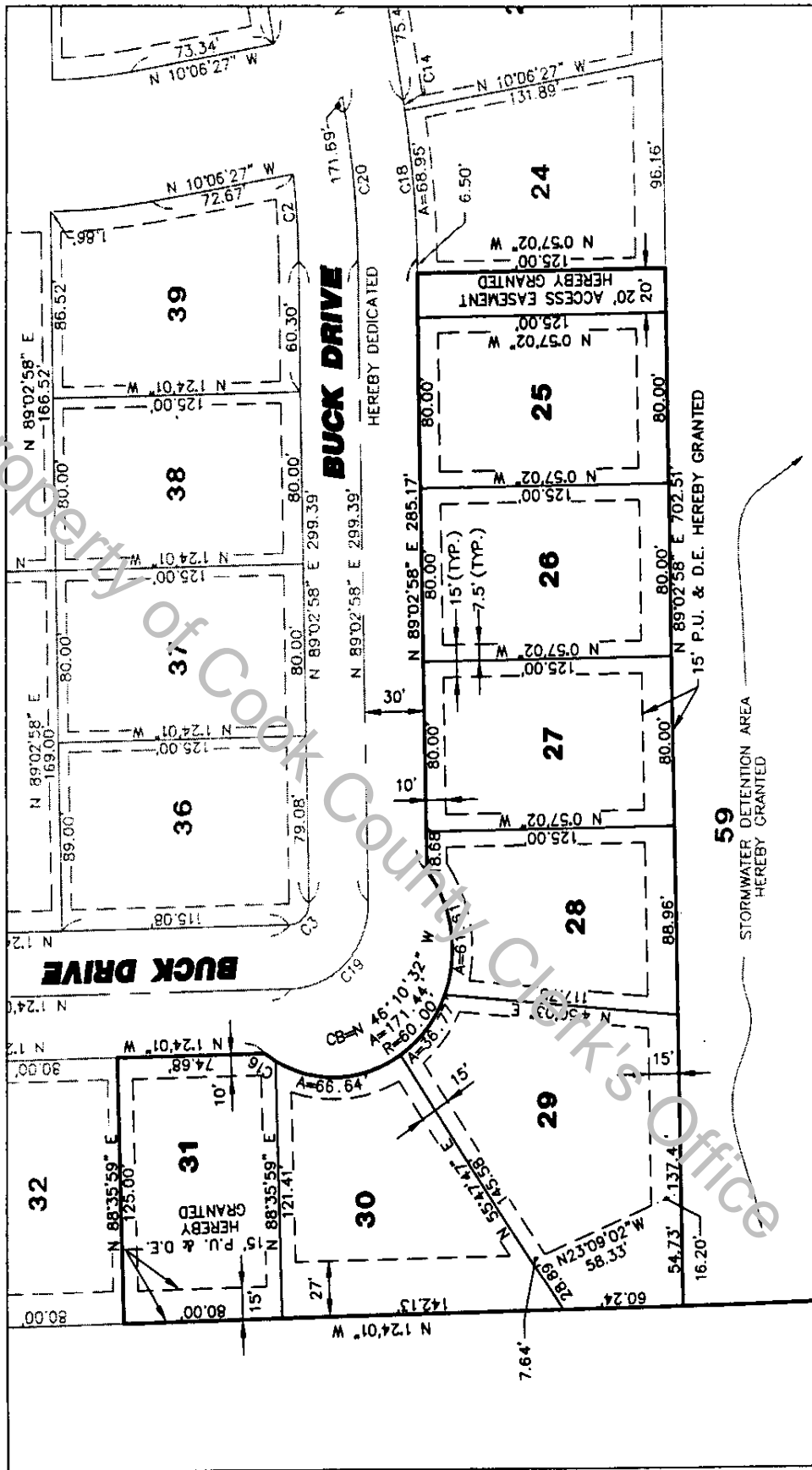
Engineers
Scientists
Surveyors

7325 Janes Avenue, Suite 100
 Woodridge, IL 60517
 630.724.9200 voice
 630.724.9202 fax
 v3consultants.com

AFFIDAVIT AND CERTIFICATE
OF CORRECTION
 FOR
DEER CHASE ESTATES

PROJECT NO. 00111
 SHEET: 3 of 5
 SCALE: 1"=80'
 DATE: APRIL 9, 2002

DEER CHASE ESTATES
 (LOTS 25 THROUGH 31 AS ENGINEERED, CONSTRUCTED, AND
 INTENDED TO BE RECORDED)
HEREBY CORRECTED & AMENDED



Engineers
 Scientists
 Surveyors

7325 Janes Avenue, Suite 100
 Woodridge, IL 60817
 630.724.8200 voice
 630.724.8202 fax
 v3consultants.com

**AFFIDAVIT AND CERTIFICATE
 OF CORRECTION**
 FOR
DEER CHASE ESTATES

PROJECT NO. 00111
 SHEET: 4 of 5
 SCALE: 1"=80'
 DATE: APRIL 9, 2002

AREA TABLE

LOT	INCORRECT AND VOID		CORRECTED AND AMENDED	
	Sq. Ft.	ACRES	Sq. Ft.	ACRES
25	10000	0.2296	10000	0.2296
26	10000	0.2296	10000	0.2296
27	10000	0.2296	10000	0.2296
28	10000	0.2296	9794	0.2248
29	17311	0.3975	15018	0.3448
30	12140	0.278	12150	0.2789
31	10000	0.2296	9990	0.2293

CURVE DATA

INCORRECT AND VOID

CURVE	CHORD BEARING	RADIUS	ARC LENGTH
C16	S 32°34'08" W	60.000'	6.522'

CORRECTED AND AMENDED

CHORD BEARING	RADIUS	ARC LENGTH
S 32°36'52" W	60.000'	6.43'



**Engineers
Scientists
Surveyors**

7325 Jones Avenue, Suite 100
Woodridge, IL 60517
630.724.8200 voice
630.724.8202 fax
v3consultants.com

**AFFIDAVIT AND CERTIFICATE
OF CORRECTION**
FOR
DEER CHASE ESTATES

PROJECT NO. 00111
SHEET: 5 of 5
SCALE: 1"=80'
DATE: APRIL 9, 2002