

UNOFFICIAL COPY



ALL AMERICAN ROOFING, INC.  
550 TELSER ROAD • LAKE ZURICH, IL 60047  
PHONE (847) 438-4131 FAX (847) 438-1387  
http://www.all-americanroofing.com



STATE OF ILLINOIS )  
 ) SS.  
COUNTY OF LAKE )

**SUBCONTRACTOR'S NOTICE  
AND CLAIM FOR LIEN**

0021409778

9737/0106 93 885 Page 1 of 4  
2002-12-19 11:51:07  
Cook County Recorder 18.50

THE CLAIMANT, All  
American Roofing, Inc., of  
Lake Zurich, County of  
Lake, State of Illinois,



0021409778

Hereby files notice and claim for  
Lien against Owner of Record, 9824 F Bianco Terrace – Des Plaines, IL, County of Cook State of  
Illinois, (hereinafter referred to as "owner"), of the following described land in the County of  
Cook, State of Illinois, to-wit:

**LIENED PROPERTY INFORMATION: 9824 F Bianco Terrace – Des Plaines, IL.**

THIS CERTIFIES THAT THE PERMANENT REAL ESTATE INDEX #09-10-301-072-1216

BEARS THE FOLLOWING LEGAL DESCRIPTION:

COOK COUNTY  
RECORDER  
EUGENE "GENE" MOORE  
ROLLING MEADOWS

And states, as follows:

THAT All American Roofing, Inc., was contractor for the improvements hereof.

THAT said contractor made subcontract with the claimant to: render improvement services on the premises and to provide labor and materials in connection therewith for and in said improvements.

THAT on July 16, 2002 the claimant completed thereunder all required by said contract to be done.

THAT at the special instance and request of said contractor the claimant furnished extra and additional materials and extra and additional labor on said premises of the value of \$ N/A and completed same on July 16, 2002.

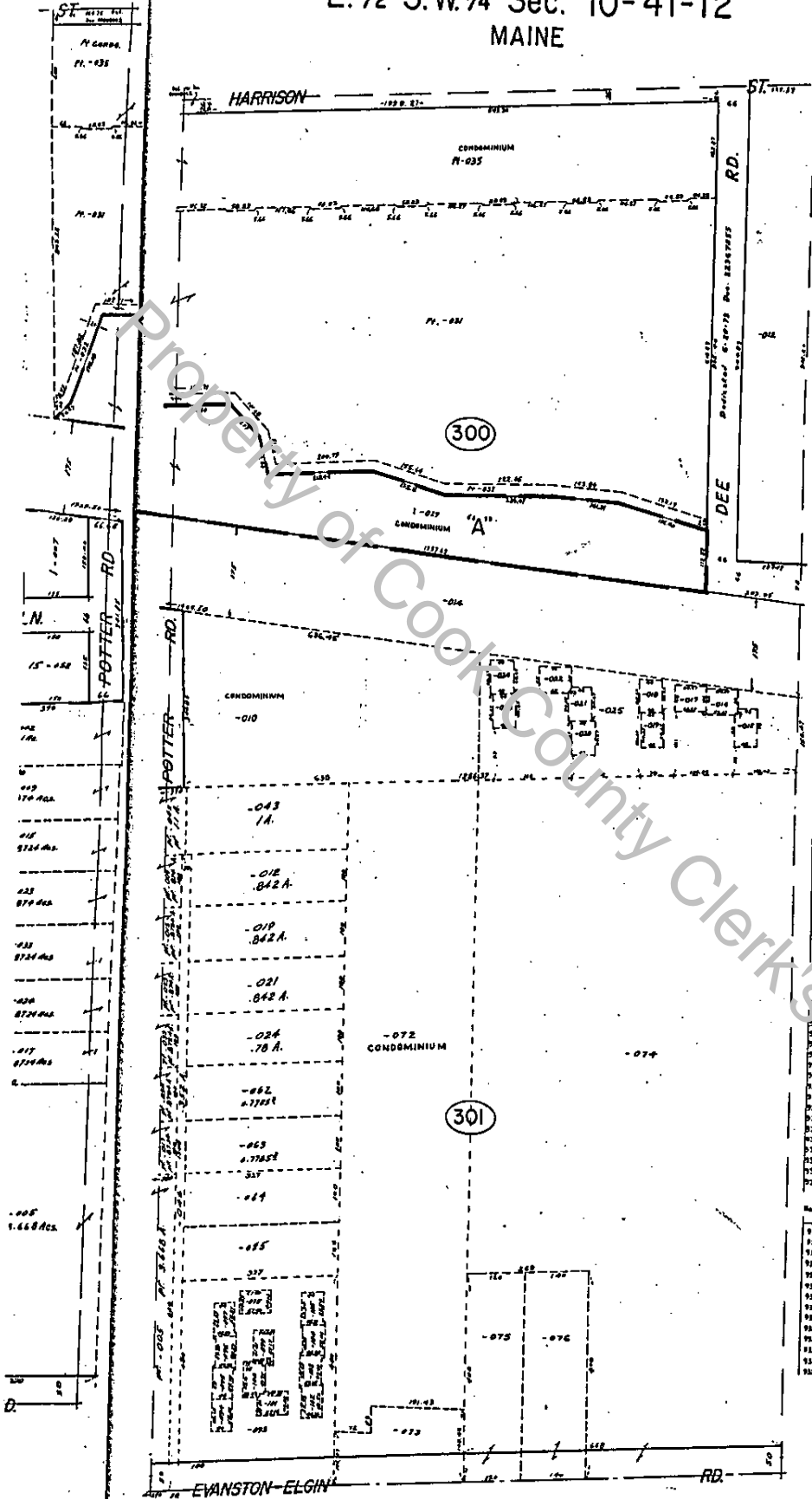
*Handwritten signature/initials*

# UNOFFICIAL COPY

## 21409778

E. 1/2 S.W. 1/4 Sec. 10-41-12  
MAINE

41-12-10F  
9-10



CONDOMINIUM 09-10-301-072  
LA CARA BLANCO CONDOMINIUM  
Reg. May 31, 1972 Dec. 21020399  
June 25, 1972 Dec. 21020400  
Aug. 19, 1972 Dec. 21020401  
Nov. 19, 1972 Dec. 21020402  
Nov. 21, 1972 Dec. 21020403

UNIT	UNIT	UNIT
U-1 = 1001	U-77 = 1077	U-103 = 1103
U-2 = 1002	U-78 = 1078	U-104 = 1104
U-3 = 1003	U-79 = 1079	U-105 = 1105
U-4 = 1004	U-80 = 1080	U-106 = 1106
U-5 = 1005	U-81 = 1081	U-107 = 1107
U-6 = 1006	U-82 = 1082	U-108 = 1108
U-7 = 1007	U-83 = 1083	U-109 = 1109
U-8 = 1008	U-84 = 1084	U-110 = 1110
U-9 = 1009	U-85 = 1085	U-111 = 1111
U-10 = 1010	U-86 = 1086	U-112 = 1112
U-11 = 1011	U-87 = 1087	U-113 = 1113
U-12 = 1012	U-88 = 1088	U-114 = 1114
U-13 = 1013	U-89 = 1089	U-115 = 1115
U-14 = 1014	U-90 = 1090	U-116 = 1116
U-15 = 1015	U-91 = 1091	U-117 = 1117
U-16 = 1016	U-92 = 1092	U-118 = 1118
U-17 = 1017	U-93 = 1093	U-119 = 1119
U-18 = 1018	U-94 = 1094	U-120 = 1120
U-19 = 1019	U-95 = 1095	U-121 = 1121
U-20 = 1020	U-96 = 1096	U-122 = 1122
U-21 = 1021	U-97 = 1097	U-123 = 1123
U-22 = 1022	U-98 = 1098	U-124 = 1124
U-23 = 1023	U-99 = 1099	U-125 = 1125
U-24 = 1024	U-100 = 1100	U-126 = 1126
U-25 = 1025	U-101 = 1101	U-127 = 1127
U-26 = 1026	U-102 = 1102	U-128 = 1128
U-27 = 1027	U-103 = 1103	U-129 = 1129
U-28 = 1028	U-104 = 1104	U-130 = 1130
U-29 = 1029	U-105 = 1105	U-131 = 1131
U-30 = 1030	U-106 = 1106	U-132 = 1132
U-31 = 1031	U-107 = 1107	U-133 = 1133
U-32 = 1032	U-108 = 1108	U-134 = 1134
U-33 = 1033	U-109 = 1109	U-135 = 1135
U-34 = 1034	U-110 = 1110	U-136 = 1136
U-35 = 1035	U-111 = 1111	U-137 = 1137
U-36 = 1036	U-112 = 1112	U-138 = 1138
U-37 = 1037	U-113 = 1113	U-139 = 1139
U-38 = 1038	U-114 = 1114	U-140 = 1140
U-39 = 1039	U-115 = 1115	U-141 = 1141
U-40 = 1040	U-116 = 1116	U-142 = 1142
U-41 = 1041	U-117 = 1117	U-143 = 1143
U-42 = 1042	U-118 = 1118	U-144 = 1144
U-43 = 1043	U-119 = 1119	U-145 = 1145
U-44 = 1044	U-120 = 1120	U-146 = 1146
U-45 = 1045	U-121 = 1121	U-147 = 1147
U-46 = 1046	U-122 = 1122	U-148 = 1148
U-47 = 1047	U-123 = 1123	U-149 = 1149
U-48 = 1048	U-124 = 1124	U-150 = 1150
U-49 = 1049	U-125 = 1125	U-151 = 1151
U-50 = 1050	U-126 = 1126	U-152 = 1152
U-51 = 1051	U-127 = 1127	U-153 = 1153
U-52 = 1052	U-128 = 1128	U-154 = 1154
U-53 = 1053	U-129 = 1129	U-155 = 1155
U-54 = 1054	U-130 = 1130	U-156 = 1156
U-55 = 1055	U-131 = 1131	U-157 = 1157
U-56 = 1056	U-132 = 1132	U-158 = 1158
U-57 = 1057	U-133 = 1133	U-159 = 1159
U-58 = 1058	U-134 = 1134	U-160 = 1160
U-59 = 1059	U-135 = 1135	U-161 = 1161
U-60 = 1060	U-136 = 1136	U-162 = 1162
U-61 = 1061	U-137 = 1137	U-163 = 1163
U-62 = 1062	U-138 = 1138	U-164 = 1164
U-63 = 1063	U-139 = 1139	U-165 = 1165
U-64 = 1064	U-140 = 1140	U-166 = 1166
U-65 = 1065	U-141 = 1141	U-167 = 1167
U-66 = 1066	U-142 = 1142	U-168 = 1168
U-67 = 1067	U-143 = 1143	U-169 = 1169
U-68 = 1068	U-144 = 1144	U-170 = 1170
U-69 = 1069	U-145 = 1145	U-171 = 1171
U-70 = 1070	U-146 = 1146	U-172 = 1172
U-71 = 1071	U-147 = 1147	U-173 = 1173
U-72 = 1072	U-148 = 1148	U-174 = 1174
U-73 = 1073	U-149 = 1149	U-175 = 1175
U-74 = 1074	U-150 = 1150	U-176 = 1176
U-75 = 1075	U-151 = 1151	U-177 = 1177
U-76 = 1076	U-152 = 1152	U-178 = 1178

CONDOMINIUM 09-10-300-018  
MILTON COURT CONDOMINIUMS  
Reg. Dec. 10, 1973 Dec. 23183472

UNIT	UNIT	UNIT
3370-A-1	3370-B-1	3370-C-1
3370-A-2	3370-B-2	3370-C-2
3370-A-3	3370-B-3	3370-C-3
3370-A-4	3370-B-4	3370-C-4
3370-A-5	3370-B-5	3370-C-5
3370-A-6	3370-B-6	3370-C-6
3370-A-7	3370-B-7	3370-C-7
3370-A-8	3370-B-8	3370-C-8
3370-A-9	3370-B-9	3370-C-9
3370-A-10	3370-B-10	3370-C-10
3370-A-11	3370-B-11	3370-C-11
3370-A-12	3370-B-12	3370-C-12
3370-A-13	3370-B-13	3370-C-13
3370-A-14	3370-B-14	3370-C-14
3370-A-15	3370-B-15	3370-C-15
3370-A-16	3370-B-16	3370-C-16
3370-A-17	3370-B-17	3370-C-17
3370-A-18	3370-B-18	3370-C-18
3370-A-19	3370-B-19	3370-C-19
3370-A-20	3370-B-20	3370-C-20

Additional Units Per J  
Reg. Plan. 21, 1980 Dec. 25407601

UNIT	UNIT	UNIT
3380-A-1001	3380-B-1001	3380-C-1001
3380-A-1002	3380-B-1002	3380-C-1002
3380-A-1003	3380-B-1003	3380-C-1003
3380-A-1004	3380-B-1004	3380-C-1004
3380-A-1005	3380-B-1005	3380-C-1005
3380-A-1006	3380-B-1006	3380-C-1006
3380-A-1007	3380-B-1007	3380-C-1007
3380-A-1008	3380-B-1008	3380-C-1008
3380-A-1009	3380-B-1009	3380-C-1009
3380-A-1010	3380-B-1010	3380-C-1010
3380-A-1011	3380-B-1011	3380-C-1011
3380-A-1012	3380-B-1012	3380-C-1012
3380-A-1013	3380-B-1013	3380-C-1013
3380-A-1014	3380-B-1014	3380-C-1014
3380-A-1015	3380-B-1015	3380-C-1015
3380-A-1016	3380-B-1016	3380-C-1016
3380-A-1017	3380-B-1017	3380-C-1017
3380-A-1018	3380-B-1018	3380-C-1018
3380-A-1019	3380-B-1019	3380-C-1019
3380-A-1020	3380-B-1020	3380-C-1020



**UNOFFICIAL COPY**

ALL AMERICAN ROOFING, INC.

550 TELSER ROAD • LAKE ZURICH, IL 60047

PHONE (847) 438-4131 FAX (847) 438-1387

http://www.all-americanroofing.com



MEMBER  
CHICAGO &  
NORTHERN ILLINOIS

21409778

THAT said contractor is entitled to credits on account thereof as follows: \$0.00, leaving due, unpaid and owing to the claimant, after allowing all credits, the sum of \$1,491.67 (One Thousand Four Hundred Ninety One and 67/100) for which, with interest, the claimant claims a lien on said land and improvements and the money or other consideration due or to become due from the owner under said contract against said contractor and owner.

All American Roofing Inc.

BY: \_\_\_\_\_

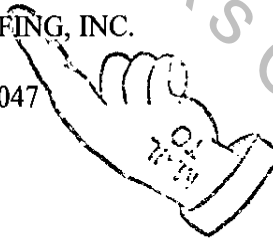
The Affiant, Sergey Taitler, being duly sworn, on oath deposes and says that he is the agent for claimant; that he has read the foregoing notice and knows the contents hereof; and that to the best of his knowledge all the statements therein contained are true.

Subscribed and sworn before me  
This 25<sup>th</sup> day of November, 2002.

Notary Public

Mail To:

ALL AMERICAN ROOFING, INC.  
550 TELSER ROAD  
LAKE ZURICH, IL. 60047



Property of Cook County Clerk's Office

# UNOFFICIAL COPY

21409778

9824 Bianco Terrace – Des Plaines, IL.

Unit # 216 As delineated on survey of a part of the East 8 acres of the W  $\frac{1}{2}$  of the SE  $\frac{1}{4}$  of the S.W  $\frac{1}{4}$  of Section 10 Township 41 North, Range 12, East of the 3<sup>rd</sup> Principle Meridian in Cook County, IL. Which Survey is attached as exhibit A to declaration of Condo Ownership made by the 1<sup>st</sup> National Bank of Arlington Heights, as trustee under trust #227. As amended from time to time together with a percentage of the common elements appurtenant to said unit as set forth in said declaration as amended from time to time which percentage shall automatically change in accordance with amended declarations pursuant to said declaration and together with additional common elements such as amended declarations are filed and recorded in the percentage set forth in such amended declarations which percentages shall automatically be deemed to be conveyed effective on the recordings of each such amended declaration as though conveyed hereby

PROPERTY OF COOK COUNTY CLERK'S OFFICE