

UNOFFICIAL COPY



ALL AMERICAN ROOFING, INC

550 TELSER ROAD • LAKE ZURICH, IL 60047

PHONE (847) 438-4131 FAX (847) 438-1387

http://www.all-americanroofing.com



STATE OF ILLINOIS)
) SS.
COUNTY OF LAKE)



0021409787

**SUBCONTRACTOR'S NOTICE
AND CLAIM FOR LIEN**

0021409787

9787/0115 93 005 Page 1 of 4
2002-12-19 11:58:37
Cook County Recorder 18.50

THE CLAIMANT, All
American Roofing, Inc., of
Lake Zurich, County of
Lake, State of Illinois,

Hereby files notice and claim for

Lien against Owner of Record, 9822 C Bianco Terrace – Des Plaines, IL. County of Cook State of Illinois, (hereinafter referred to as "owner"), of the following described land in the County of Cook, State of Illinois, to-wit:

LIENED PROPERTY INFORMATION: 9822 C Bianco Terrace – Des Plaines, IL.

THIS CERTIFIES THAT THE PERMANENT REAL ESTATE INDEX #09-10-301-072-1219

BEARS THE FOLLOWING LEGAL DESCRIPTION:

**COOK COUNTY
RECORDER
EUGENE "GENE" MOORE
ROLLING MEADOWS**

And states, as follows:

THAT All American Roofing, Inc., was contractor for the improvements hereof.

THAT said contractor made subcontract with the claimant to render improvement services on the premises and to provide labor and materials in connection herewith for and in said improvements.

THAT on July 16, 2002 the claimant completed thereunder all required by said contract to be done.

THAT at the special instance and request of said contractor the claimant furnished extra and additional materials and extra and additional labor on said premises of the value of \$ N/A and completed same on July 16, 2002.

UNOFFICIAL COPY



ALL AMERICAN ROOFING, INC.

550 TELSER ROAD • LAKE ZURICH, IL 60047

PHONE (847) 438-4131 FAX (847) 438-1387

http://www.all-americanroofing.com



21409787

THAT said contractor is entitled to credits on account thereof as follows: \$0.00, leaving due, unpaid and owing to the claimant, after allowing all credits, the sum of \$1,470.00 (One Thousand Four Hundred Seventy and 00/100) for which, with interest, the claimant claims a lien on said land and improvements and the money or other consideration due or to become due from the owner under said contract against said contractor and owner.

All American Roofing Inc.

BY: _____

The Affiant, Sergey Taitler, being duly sworn, on oath deposes and says that he is the agent for claimant; that he has read the foregoing notice and knows the contents hereof, and that to the best of his knowledge all the statements therein contained are true.

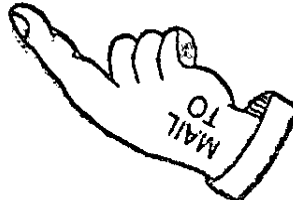
Subscribed and sworn before me
This 25th day of November, 2002.

Barbara Ludvigsen
Notary Public



Mail To:

ALL AMERICAN ROOFING, INC.
550 TELSER ROAD
LAKE ZURICH, IL. 60047



UNOFFICIAL COPY

21409787

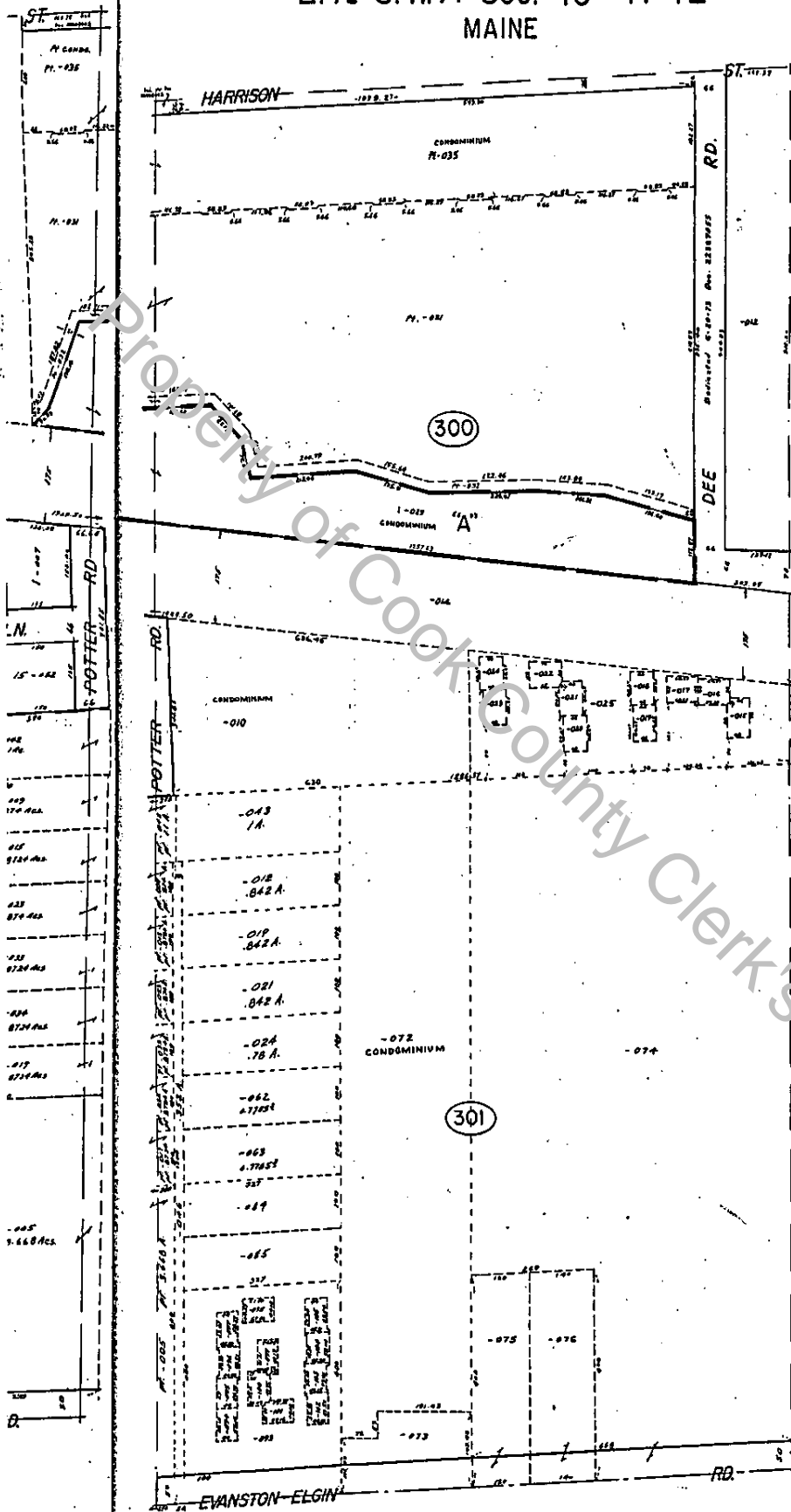
9822 Bianco Terrace – Des Plaines, IL.

Unit # 219 As delineated on survey of a part of the East 8 acres of the W ½ of the SE ¼ of the S.W ¼ of Section 10 Township 41 North, Range 12, East of the 3rd Principle Meridian in Cook County, IL. Which Survey is attached as exhibit A to declaration of Condo Ownership made by the 1st National Bank of Arlington Heights, as trustee under trust #227. As amended from time to time together with a percentage of the common elements affuflenant to said unit as set forth in said declaration as amended from time to time which percentage shall automatically change in accordance with amended declarations pursuant to said declaration and together with additional common elements such as amended declarations are filed and recorded in the percentage set forth in such amended declarations which percentages shall automatically be deemed to be conveyed effective on the recordings of each such amended declaration as though conveyed hereby

PROPERTY of Cook County Clerk's Office

E. 1/2 S.W. 1/4 Sec. 10-41-12
MAINE

41-12-10F
9-10



CONDOMINIUM 09-10-331-072
LA CASA BIANCA CONDOMINIUM
Rec. May 31, 1978 Dec. 3192-0379
June 30, 1978 Dec. 3192-0379
Aug. 18, 1978 Dec. 3192-0379
Sept. 19, 1978 Dec. 3192-0379
Nov. 20, 1978 Dec. 3192-0379

UNIT	UNIT	UNIT
U-1 = 1001	U-17 = 1171	U-23 = 1171
U-2 = 1002	U-18 = 1172	U-24 = 1172
U-3 = 1003	U-19 = 1173	U-25 = 1173
U-4 = 1004	U-20 = 1174	U-26 = 1174
U-5 = 1005	U-21 = 1175	U-27 = 1175
U-6 = 1006	U-22 = 1176	U-28 = 1176
U-7 = 1007	U-23 = 1177	U-29 = 1177
U-8 = 1008	U-24 = 1178	U-30 = 1178
U-9 = 1009	U-25 = 1179	U-31 = 1179
U-10 = 1010	U-26 = 1180	U-32 = 1180
U-11 = 1011	U-27 = 1181	U-33 = 1181
U-12 = 1012	U-28 = 1182	U-34 = 1182
U-13 = 1013	U-29 = 1183	U-35 = 1183
U-14 = 1014	U-30 = 1184	U-36 = 1184
U-15 = 1015	U-31 = 1185	U-37 = 1185
U-16 = 1016	U-32 = 1186	U-38 = 1186
U-17 = 1017	U-33 = 1187	U-39 = 1187
U-18 = 1018	U-34 = 1188	U-40 = 1188
U-19 = 1019	U-35 = 1189	U-41 = 1189
U-20 = 1020	U-36 = 1190	U-42 = 1190
U-21 = 1021	U-37 = 1191	U-43 = 1191
U-22 = 1022	U-38 = 1192	U-44 = 1192
U-23 = 1023	U-39 = 1193	U-45 = 1193
U-24 = 1024	U-40 = 1194	U-46 = 1194
U-25 = 1025	U-41 = 1195	U-47 = 1195
U-26 = 1026	U-42 = 1196	U-48 = 1196
U-27 = 1027	U-43 = 1197	U-49 = 1197
U-28 = 1028	U-44 = 1198	U-50 = 1198
U-29 = 1029	U-45 = 1199	U-51 = 1199
U-30 = 1030	U-46 = 1200	U-52 = 1200
U-31 = 1031	U-47 = 1201	U-53 = 1201
U-32 = 1032	U-48 = 1202	U-54 = 1202
U-33 = 1033	U-49 = 1203	U-55 = 1203
U-34 = 1034	U-50 = 1204	U-56 = 1204
U-35 = 1035	U-51 = 1205	U-57 = 1205
U-36 = 1036	U-52 = 1206	U-58 = 1206
U-37 = 1037	U-53 = 1207	U-59 = 1207
U-38 = 1038	U-54 = 1208	U-60 = 1208
U-39 = 1039	U-55 = 1209	U-61 = 1209
U-40 = 1040	U-56 = 1210	U-62 = 1210
U-41 = 1041	U-57 = 1211	U-63 = 1211
U-42 = 1042	U-58 = 1212	U-64 = 1212
U-43 = 1043	U-59 = 1213	U-65 = 1213
U-44 = 1044	U-60 = 1214	U-66 = 1214
U-45 = 1045	U-61 = 1215	U-67 = 1215
U-46 = 1046	U-62 = 1216	U-68 = 1216
U-47 = 1047	U-63 = 1217	U-69 = 1217
U-48 = 1048	U-64 = 1218	U-70 = 1218
U-49 = 1049	U-65 = 1219	U-71 = 1219
U-50 = 1050	U-66 = 1220	U-72 = 1220
U-51 = 1051	U-67 = 1221	U-73 = 1221
U-52 = 1052	U-68 = 1222	U-74 = 1222
U-53 = 1053	U-69 = 1223	U-75 = 1223
U-54 = 1054	U-70 = 1224	U-76 = 1224
U-55 = 1055	U-71 = 1225	U-77 = 1225
U-56 = 1056	U-72 = 1226	U-78 = 1226
U-57 = 1057	U-73 = 1227	U-79 = 1227
U-58 = 1058	U-74 = 1228	U-80 = 1228
U-59 = 1059	U-75 = 1229	U-81 = 1229
U-60 = 1060	U-76 = 1230	U-82 = 1230
U-61 = 1061	U-77 = 1231	U-83 = 1231
U-62 = 1062	U-78 = 1232	U-84 = 1232
U-63 = 1063	U-79 = 1233	U-85 = 1233
U-64 = 1064	U-80 = 1234	U-86 = 1234
U-65 = 1065	U-81 = 1235	U-87 = 1235
U-66 = 1066	U-82 = 1236	U-88 = 1236
U-67 = 1067	U-83 = 1237	U-89 = 1237
U-68 = 1068	U-84 = 1238	U-90 = 1238
U-69 = 1069	U-85 = 1239	U-91 = 1239
U-70 = 1070	U-86 = 1240	U-92 = 1240
U-71 = 1071	U-87 = 1241	U-93 = 1241
U-72 = 1072	U-88 = 1242	U-94 = 1242
U-73 = 1073	U-89 = 1243	U-95 = 1243
U-74 = 1074	U-90 = 1244	U-96 = 1244
U-75 = 1075	U-91 = 1245	U-97 = 1245
U-76 = 1076	U-92 = 1246	U-98 = 1246
U-77 = 1077	U-93 = 1247	U-99 = 1247
U-78 = 1078	U-94 = 1248	U-100 = 1248

CONDOMINIUM 09-10-300-076
HAMILTON COURT CONDOMINIUM
Map. Oct. 10, 1979 Dec. 2313-0472

UNIT	UNIT	UNIT
3310-A-1001	3310-B-1001	3310-C-1001
3310-A-1002	3310-B-1002	3310-C-1002
3310-A-1003	3310-B-1003	3310-C-1003
3310-A-1004	3310-B-1004	3310-C-1004
3310-A-1005	3310-B-1005	3310-C-1005
3310-A-1006	3310-B-1006	3310-C-1006
3310-A-1007	3310-B-1007	3310-C-1007
3310-A-1008	3310-B-1008	3310-C-1008
3310-A-1009	3310-B-1009	3310-C-1009
3310-A-1010	3310-B-1010	3310-C-1010
3310-A-1011	3310-B-1011	3310-C-1011
3310-A-1012	3310-B-1012	3310-C-1012
3310-A-1013	3310-B-1013	3310-C-1013
3310-A-1014	3310-B-1014	3310-C-1014
3310-A-1015	3310-B-1015	3310-C-1015
3310-A-1016	3310-B-1016	3310-C-1016
3310-A-1017	3310-B-1017	3310-C-1017
3310-A-1018	3310-B-1018	3310-C-1018
3310-A-1019	3310-B-1019	3310-C-1019
3310-A-1020	3310-B-1020	3310-C-1020
3310-A-1021	3310-B-1021	3310-C-1021
3310-A-1022	3310-B-1022	3310-C-1022
3310-A-1023	3310-B-1023	3310-C-1023
3310-A-1024	3310-B-1024	3310-C-1024
3310-A-1025	3310-B-1025	3310-C-1025
3310-A-1026	3310-B-1026	3310-C-1026
3310-A-1027	3310-B-1027	3310-C-1027
3310-A-1028	3310-B-1028	3310-C-1028
3310-A-1029	3310-B-1029	3310-C-1029
3310-A-1030	3310-B-1030	3310-C-1030
3310-A-1031	3310-B-1031	3310-C-1031
3310-A-1032	3310-B-1032	3310-C-1032
3310-A-1033	3310-B-1033	3310-C-1033
3310-A-1034	3310-B-1034	3310-C-1034
3310-A-1035	3310-B-1035	3310-C-1035
3310-A-1036	3310-B-1036	3310-C-1036
3310-A-1037	3310-B-1037	3310-C-1037
3310-A-1038	3310-B-1038	3310-C-1038
3310-A-1039	3310-B-1039	3310-C-1039
3310-A-1040	3310-B-1040	3310-C-1040
3310-A-1041	3310-B-1041	3310-C-1041
3310-A-1042	3310-B-1042	3310-C-1042
3310-A-1043	3310-B-1043	3310-C-1043
3310-A-1044	3310-B-1044	3310-C-1044
3310-A-1045	3310-B-1045	3310-C-1045
3310-A-1046	3310-B-1046	3310-C-1046
3310-A-1047	3310-B-1047	3310-C-1047
3310-A-1048	3310-B-1048	3310-C-1048
3310-A-1049	3310-B-1049	3310-C-1049
3310-A-1050	3310-B-1050	3310-C-1050

Additional Units Per J
Map. Plan. 81-1780 Dec. 25-07-01

UNIT	UNIT	UNIT
9300-B-1001	9300-C-1001	9300-E-1001
9300-B-1002	9300-C-1002	9300-E-1002
9300-B-1003	9300-C-1003	9300-E-1003
9300-B-1004	9300-C-1004	9300-E-1004
9300-B-1005	9300-C-1005	9300-E-1005
9300-B-1006	9300-C-1006	9300-E-1006
9300-B-1007	9300-C-1007	9300-E-1007
9300-B-1008	9300-C-1008	9300-E-1008
9300-B-1009	9300-C-1009	9300-E-1009
9300-B-1010	9300-C-1010	9300-E-1010
9300-B-1011	9300-C-1011	9300-E-1011
9300-B-1012	9300-C-1012	9300-E-1012
9300-B-1013	9300-C-1013	9300-E-1013
9300-B-1014	9300-C-1014	9300-E-1014
9300-B-1015	9300-C-1015	9300-E-1015
9300-B-1016	9300-C-1016	9300-E-1016
9300-B-1017	9300-C-1017	9300-E-1017
9300-B-1018	9300-C-1018	9300-E-1018
9300-B-1019	9300-C-1019	9300-E-1019
9300-B-1020	9300-C-1020	9300-E-1020
9300-B-1021	9300-C-1021	9300-E-1021
9300-B-1022	9300-C-1022	9300-E-1022
9300-B-1023	9300-C-1023	9300-E-1023
9300-B-1024	9300-C-1024	9300-E-1024
9300-B-1025	9300-C-1025	9300-E-1025
9300-B-1026	9300-C-1026	9300-E-1026
9300-B-1027	9300-C-1027	9300-E-1027
9300-B-1028	9300-C-1028	9300-E-1028
9300-B-1029	9300-C-1029	9300-E-1029
9300-B-1030	9300-C-1030	9300-E-1030
9300-B-1031	9300-C-1031	9300-E-1031
9300-B-1032	9300-C-1032	9300-E-1032
9300-B-1033	9300-C-1033	9300-E-1033
9300-B-1034	9300-C-1034	9300-E-1034
9300-B-1035	9300-C-1035	9300-E-1035
9300-B-1036	9300-C-1036	9300-E-1036
9300-B-1037	9300-C-1037	9300-E-1037
9300-B-1038	9300-C-1038	9300-E-1038
9300-B-1039	9300-C-1039	9300-E-1039
9300-B-1040	9300-C-1040	9300-E-1040

REVISED JAN. 1, 2001