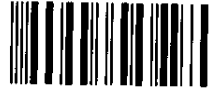


UNOFFICIAL COPY

00389867

3651/0145 28 001 Page 1 of 5
2000-05-30 16:17:35
Cook County Recorder 29.00

D99486Amend1



00389867

This document prepared by
and mail to:

JOHN C. GRIFFIN
10001 S. Roberts Road
Palos Hills, IL 60465
(708) 598-6800



Property of Cook County Clerk's Office

FIRST AMENDMENT
TO
DECLARATION OF CONDOMINIUM OWNERSHIP AND
EASEMENTS, RESTRICTIONS AND COVENANTS
FOR 1630 N. BELL CONDOMINIUMS
AND
DECLARATION OF BYLAWS FOR
THE 1630 N. BELL CONDOMINIUM ASSOCIATION
AN ILLINOIS NOT-FOR-PROFIT CORPORATION

THIS FIRST AMENDMENT TO DECLARATION OF CONDOMINIUM OWNERSHIP AND EASEMENTS, RESTRICTIONS AND COVENANTS FOR 1630 N. BELL CONDOMINIUMS AND DECLARATION OF BYLAWS FOR THE 1630 N. BELL CONDOMINIUM ASSOCIATION, AN ILLINOIS NOT-FOR-PROFIT CORPORATION is made and entered into by TPB DEVELOPMENT, INC. (The "Declarant")

WITNESSETH:

WHEREAS, by the Declaration of Condominium Ownership and Easements, Restrictions and Covenants for 1630 N. BELL CONDOMINIUMS and Declaration of Bylaws for THE 1630 N. BELL CONDOMINIUM ASSOCIATION, AN ILLINOIS NOT-FOR-PROFIT CORPORATION ("Declaration") recorded in the Office of the Recorder of Deeds of Cook County, Illinois, as Document No.00348193, TPB DEVELOPMENT, INC.,

A
F
V
M

RECORDING FEE 29.00
DATE 5/30/00 COPIES 6
CK BY gm 5 pgs.

D99486Amend1

submitted certain real estate (the "Property") to the provisions of the Declaration of said Condominium development being known as 1630 N. BELL CONDOMINIUM ASSOCIATION (the "Condominiums") which is legally described as follows:

LOT 4 IN BLOCK 1 IN W.T. JOHNSON'S SUBDIVISION OF THAT PART OF LOT 5 AND THE SOUTH 33.00 FEET OF LOT 3 OF ASSESSOR'S DIVISION OF UNSUBDIVIDED LANDS IN THE SOUTH 1/2 OF THE SOUTHWEST 1/4 OF SECTION 31, TOWNSHIP 40 NORTH, RANGE 14, EAST OF THE THIRD PRINCIPAL MERIDIAN, IN COOK COUNTY, ILLINOIS.

PIN: 14-31-328-038


P/A: 1630 North Bell, Chicago, IL 60647

WHEREAS, the Plat of 1630 N. Bell Condominium recorded as Document 00348193, Exhibit "A" thereto, recorded May 16, 2000, in the Cook County Recorder of Deeds contained errors in the labeling and assigning of the storage spaces;

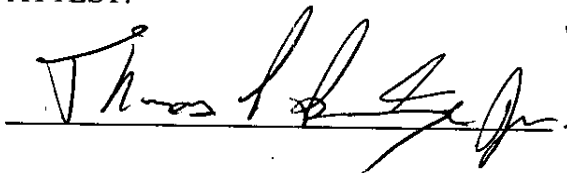
WHEREAS, the Declarant desires to correct said errors;

NOW THEREFORE, TPB Development, Inc. for the purpose set forth above, hereby declares that the Declaration and Plat be and hereby are amended to adopt the labeling and assignment of storage spaces as delineated on the Surveyors Certificate of Correction attached hereto as Exhibit "A" and table of unit ownership and assignment attached hereto as Exhibit "B". Except as expressly set forth herein, the Declaration shall remain in full force and effect in accordance with its terms.

TPB DEVELOPMENT, INC.


Thomas P. Boyle, Jr.

ATTEST:



UNOFFICIAL COPY

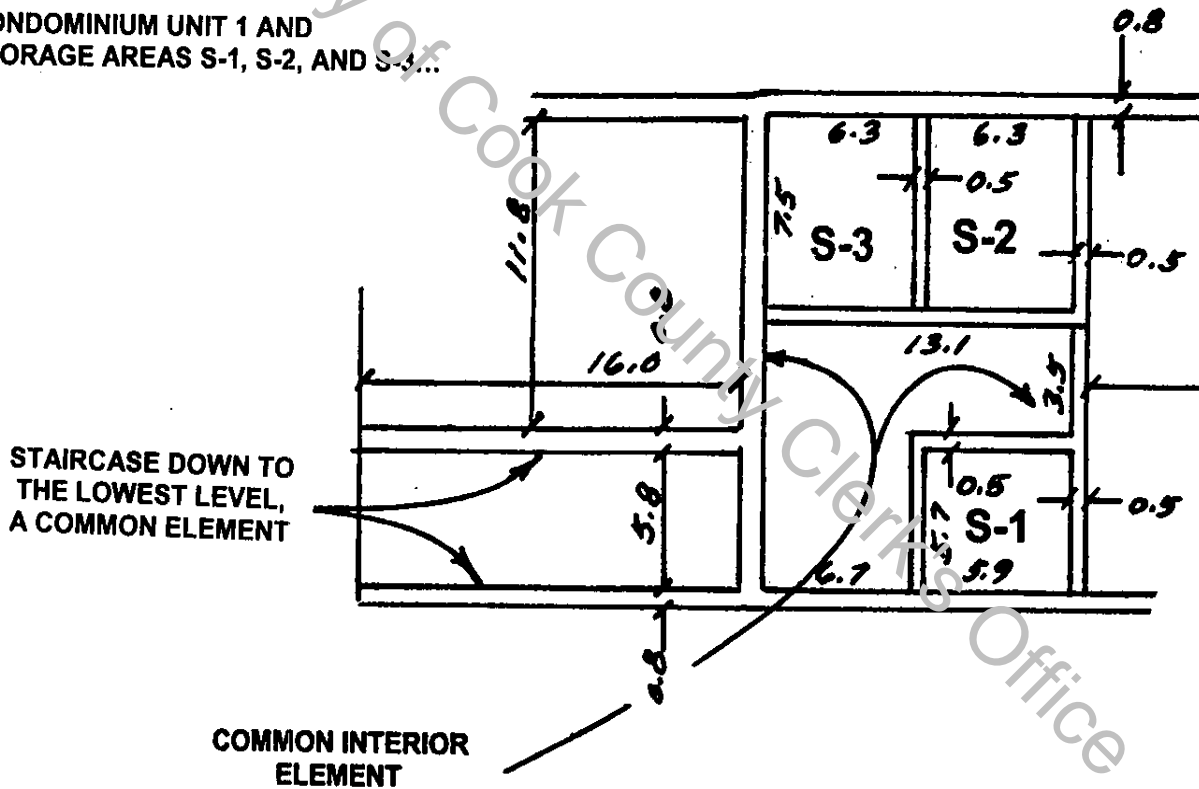
SURVEYORS CERTIFICATE OF CORRECTION

00389867

STATE OF ILLINOIS)
COUNTY OF COOK) SS

This statement of amendment and correction pertains to the **PLAT OF 1630 N. BELL CONDOMINIUM** recorded as **Document 00348193, EXHIBIT A thereto**, recorded May 16, 2000 in the Plat and Deed Records of Cook County, Illinois. This amendment and correction is to show the proper labeling of the Storage Areas located on the lowest floor of the condominium. **THE AMENDED AND CORRECTED PORTION OF THE PLAT IS AS FOLLOWS:**

**CONDOMINIUM UNIT 1 AND
STORAGE AREAS S-1, S-2, AND S-3...**



CERTIFICATION: Landtech Consultants, Ltd., Illinois Professional Land Surveying Firm Corporation # 94 has made this amendment and correction to the plat of record.

By it's Corporate Officer,
George E. Stourton, P.L.S. # 2058
September 11, 1998

Prepared by George E. Stourton, P.E., P.L.S., 412 Oakview Ave., Joliet IL 60433-2028

RETURN TO

This amendment pertains to P. I. N. 14-31-328-038, previous Document 00348193.

EXHIBIT "A"



UNOFFICIAL COPY

D99486Amend1

00389867

AMENDED

EXHIBIT "B"

<u>UNIT NUMBER</u>	<u>COMMON ELEMENTS</u>	<u>PARKING SPACES</u>	<u>STORAGE SPACE</u>
UNIT 1	33.50	P1, P2	S-1
UNIT 2	33.00	P3, P4	S-2
UNIT 3	33.50	P5, P6	S-3

100.00000%

Property of Cook County Clerk's Office