

UNOFFICIAL COPY

*Prepared by and
After recording, return to:*

Gregory A. MacDonald
Robinson, Pluymert, Piercey,
MacDonald & Amato, Ltd.
733 Lee Street, Suite 100
Des Plaines, Illinois 60016



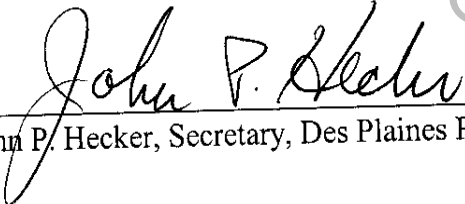
Doc#: 0407049122
Eugene "Gene" Moore Fee: \$40.50
Cook County Recorder of Deeds
Date: 03/10/2004 12:15 PM Pg: 1 of 9

CERTIFICATION

I, John P. Hecker, do hereby certify that I am the Secretary of Des Plaines Park District of Cook County, Illinois and as such I am the keeper of the Ordinances, Minutes and other records of the Des Plaines Park District.

I further certify that the attached is a true and correct copy of Ordinance No. 04-01 "An Ordinance Annexing Certain Territory to the Des Plaines Park District, Cook County, Illinois (Approx. .5 acres located on the East side of East River Road and commonly known as *25 N. East River Road, Des Plaines, Cook County, Illinois*)."

Witness my hand this 20th day of January, 2004.


John P. Hecker, Secretary, Des Plaines Park District

UNOFFICIAL COPY

DES PLAINES PARK DISTRICT

ORDINANCE NO. 04-01

**AN ORDINANCE ANNEXING CERTAIN
TERRITORY TO THE DES PLAINES PARK DISTRICT,
COOK COUNTY, ILLINOIS**

(Approx. .5 acres located on the East side of East River Road and
commonly known as 25 N. East River Road, Des Plaines, Cook County, Illinois)

Property of Cook County Clerk's Office

Des Plaines Park District
2222 Birch Street
Des Plaines, IL 60018

UNOFFICIAL COPY

ORDINANCE NO. 04-01

AN ORDINANCE ANNEXING CERTAIN TERRITORY TO THE DES PLAINES PARK DISTRICT, COOK COUNTY, ILLINOIS (Approx. .5 acres located on the East side of East River Road and commonly known as 25 N. East River Road, Cook County, Illinois)

WHEREAS, the Mayor and City Council of the City of Des Plaines previously annexed the property ("Subject Territory") which is legally described on Exhibit A attached hereto and incorporated herein, and

WHEREAS, the Des Plaines Park District will become nearly coterminous with the City of Des Plaines upon the annexation of the Subject Territory; and

WHEREAS, said Subject Territory is not within the corporate limits of any park district, but is contiguous to the Des Plaines Park District and is less than 120 acres; and

WHEREAS, the Des Plaines Park District is authorized to annex additional property according to Section 3-10 of the Illinois Park District Code (70 ILCS 1205/3-10); and

WHEREAS, it is in the best interest of the Des Plaines Park District that said Subject Territory be annexed;

NOW, THEREFORE, BE IT ORDAINED BY THE BOARD OF COMMISSIONERS OF THE DES PLAINES PARK DISTRICT, COOK COUNTY, ILLINOIS, as follows:

SECTION 1: That the Subject Territory which is legally described in Exhibit A attached hereto is hereby annexed to the Des Plaines Park District, Cook County, Illinois.

SECTION 2: That the Secretary of the Des Plaines Park District is hereby directed to record in the Office of the Recorder of Deeds of Cook County, Illinois, and to file in the Office of the County Clerk of Cook County, Illinois being the County in which the aforesaid annexed territory is situated, a certified copy of this Ordinance together with an accurate map of the territory hereby

UNOFFICIAL COPY

annexed, said map being attached hereto and made a part hereof and labeled Exhibit B.

SECTION 3: That this Ordinance shall be in full force and effect from and after its passage and approval, and when a certified copy thereof, together with an accurate map is recorded in the Office of the Recorder of Deeds of Cook County, Illinois, and filed in the Office of the County Clerk of Cook County, Illinois; and thereupon said territory shall be subject to the jurisdiction of the Des Plaines Park District.

AYES: 5

NAYS: 0

ABSENT: 0

PASSED this 20th day of January, 2004

DES PLAINES PARK DISTRICT

William J. Yates
William J. Yates, President

(SEAL)

ATTEST:

John P. Hecker
John P. Hecker, Secretary

Property of Cook County Clerk's Office

UNOFFICIAL COPY

Exhibit A

LEGAL DESCRIPTION OF THE SUBJECT TERRITORY

THAT CERTAIN TRACT OF LAND LYING IN THE EAST 1/2 OF THE SOUTHEAST 1/4 OF SECTION 9, TOWNSHIP 41 NORTH, RANGE 12, EAST OF THE THIRD PRINCIPAL MERIDIAN, IN COOK COUNTY, DESCRIBED AS BEGINNING AT A POINT ON THE WEST LINE OF THE EAST 1/2 OF SOUTHEAST 1/4 OF SAID SECTION 9, AT A POINT 4.65 CHAINS NORTH OF THE SOUTH LINE OF SAID SECTION 9, THENCE NORTH ALONG SAID LINE 100.0 FEET; THENCE EAST ON A LINE PARALLEL WITH THE SOUTH LINE OF SAID SECTION 9 A DISTANCE OF 238.0 FEET, THENCE SOUTH ON A LINE PARALLEL TO THE EAST LINE OF SAID SECTION 9, A DISTANCE OF 100.0 FEET, THENCE WEST ON A LINE PARALLEL WITH THE SOUTH LINE OF SAID SECTION 9 A DISTANCE OF 238.0 FEET TO THE PLACE OF BEGINNING.

PIN(s): 09-09-401-016-0000

Property of Cook County Clerk's Office

EXHIBIT B
UNOFFICIAL COPY

**PLAT OF ANNEXATION TO THE CITY
DES PLAINES**

THAT CERTAIN TRACT OF LAND LYING IN THE EAST HALF (½) OF THE SOUTHEAST QUARTER (¼) OF SECTION NINE (9), TOWNSHIP FORTY ONE (41) NORTH, RANGE TWELVE (12), EAST OF THE THIRD PRINCIPAL MERIDIAN IN COOK COUNTY, ILLINOIS, DESCRIBED AS BEGINNING AT A POINT ON THE WEST LINE OF THE EAST HALF (½) OF THE SOUTHEAST QUARTER (¼) OF SAID SECTION NINE (9) AT A POINT FOUR AND SIXTY FIVE HUNDREDS (4.65) CHAINS NORTH OF THE SOUTH LINE OF SAID SECTION NINE (9), THENCE NORTH ALONG SAID LINE ONE HUNDRED (100.0) FEET, THENCE EAST ON A LINE PARALLEL WITH THE SOUTH LINE OF SAID SECTION NINE (9) A DISTANCE OF ONE HUNDRED THIRTY EIGHT (138.0) FEET, THENCE SOUTH ON A LINE PARALLEL TO THE EAST LINE OF SAID SECTION NINE (9) A DISTANCE OF TWO HUNDRED THIRTY EIGHT (238.0) FEET TO WEST ON A LINE PARALLEL WITH THE SOUTH LINE OF SAID SECTION NINE (9) A DISTANCE OF TWO HUNDRED THIRTY EIGHT (238.0) FEET TO THE PLACE OF BEGINNING. (EXCEPT THAT PORT THEREOF FALLING WITHIN EAST RIVER ROAD.)

MORE COMMONLY KNOWN AS: 25 NORTH EAST RIVER ROAD, DES PLAINES, ILLINOIS

Property of Cook County Clerk's Office

ROAD

← EXIT RAMP -

LINE PARALLEL WITH THE SOUTH LINE OF SECTION 9

187.98

UNOFFICIAL COPY

EAST

RIVER

ROAD

50.00'

50.00'

EAST LINE OF EAST RIVER RD.

100.00'

91°15'20"

PRESSENT CORPORATE LIMITS OF THE CITY OF DES PLAINES,
COOK COUNTY, ILLINOIS - DOC. 26918377

Property of Cook County Clerk's Office

LINE PARALLEL WITH THE SOUTH LINE OF SECTION 9

187.98'

177.68'

HEREBY ANNEXED TO THE CITY OF DES PLAINES
AREA = 0.43144 ACRES

LINE PARALLEL WITH THE SOUTH LINE OF SECTION 9

187.98'

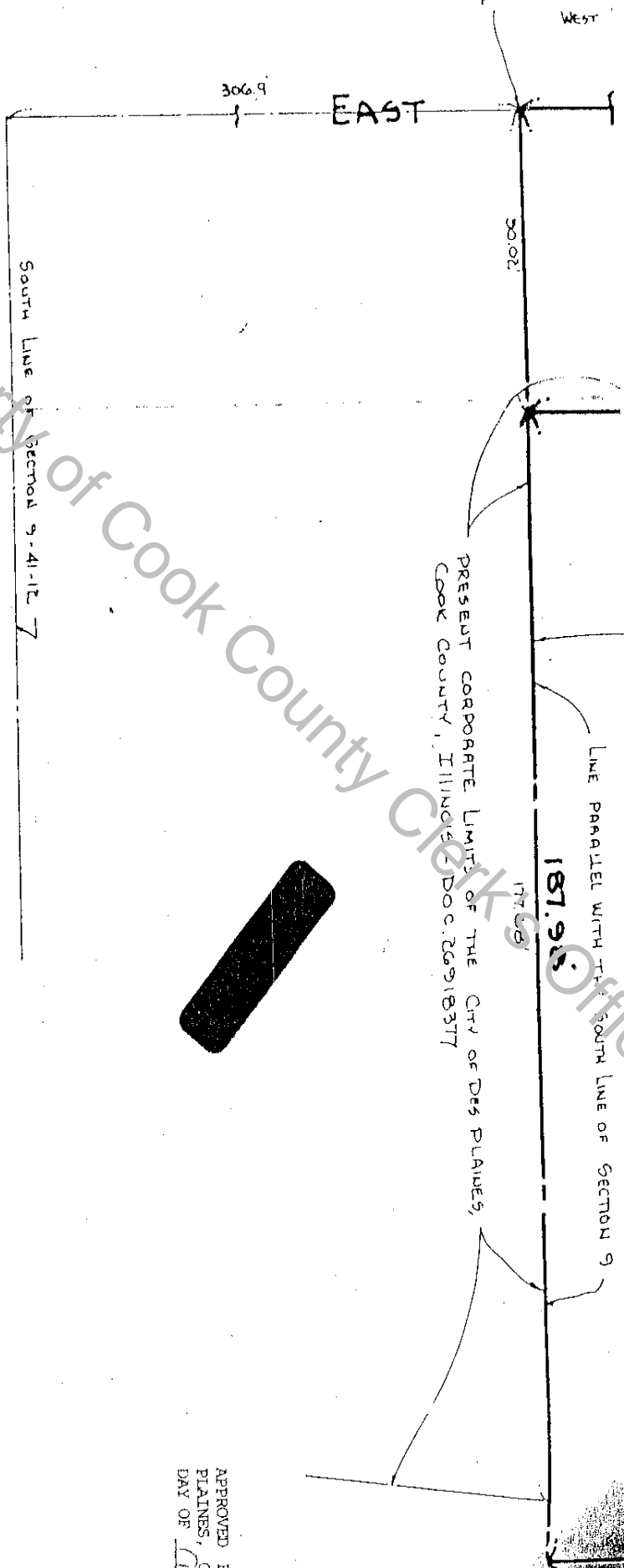
EXIT RAMP -

100.00'

NORTHERN ILLINOIS TOLL HIGHWAY

UNOFFICIAL COPY

POINT OF BEGINNING



PRESENT CORPORATE LIMITS OF THE CITY OF DES PLAINES, COOK COUNTY, ILLINOIS (DOC. 26918377)

LINE PARALLEL WITH THE SOUTH LINE OF SECTION 9

187.95

177.06

EAST

WEST

South Line of Section 9-41-12-7

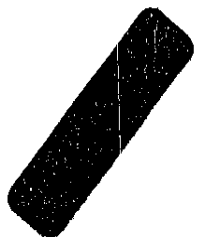
INCH EQUALS 20 FEET
 BY CITY OF DES PLAINES
 NUMBER 95-1527

PREPARED BY: R.W. STANLEY & ASSOCIATES

570 E. NORTHWEST HIGHWAY
 DES PLAINES, ILLINOIS, 60016
 (708) 699-0018

THIS DOES NOT REQUIRE THE COUNTY CLERK'S ENDORSEMENT
 REQUIRED IN SECTION 516 CHAPTER 120 REVENUE LAW OF
 ILLINOIS.

DATE 10-12-95
 COUNTY CLERK [Signature]



APPROVED BY
 PLAINES, COOK
 DAY OF 11

STATE OF ILLINOIS
 COUNTY OF COOK
 I, RONALD
 SCRIBED FOR
 THE PURPOSE
 IS A CORRECT
 DIMENSIONS
 AND ARE CORRE
 DES PLAINES,

ILLINOIS REG

UNOFFICIAL COPY

Exhibit B

[Map of Territory to be Annexed]

