

UNOFFICIAL COPY



ALL AMERICAN
EXTERIOR SOLUTIONS

STATE OF ILLINOIS)
)
COUNTY OF COOK)



Doc#: 0521455140
Eugene "Gene" Moore Fee: \$18.00
Cook County Recorder of Deeds
Date: 08/02/2005 04:04 PM Pg: 1 of 3

**RELEASE OF
SUBCONTRACTOR'S NOTICE
AND CLAIM FOR MECHANIC'S
LIEN**

KNOW ALL MEN BY THESE
PRESENTS, All American Roofing, Inc.
Of Lake Zurich Illinois, an Illinois
Corporation, for and in consideration of
The sum of One Thousand Four Hundred
Seventy (\$1,470.00) in

Lawful money of the United States paid to All American Roofing, Inc. at the date hereof,
has remised released and discharged 9717 E Bianco Terrace – Des Plaines, Cook
County and Owner of Record of the following described land in the County of Cook,
State of Illinois, to-wit:

PIN# 09-10-301-072-1119
COMMONLY KNOW AS: 9717 E Bianco Terrace – Des Plaines, IL.

By the presents, docs for all heirs, executors and administrators, remise, release and
discharge the said heirs, executors, and administrators, if and for a part of actions, cause,
and causes of action, suites, debts, sums of money, accounts, claims and demands, in law
or in equity and without limiting the generality of the foregoing, release the
SUBCONTRACTORS NOTICE AND CLAIM FOR MECHANIC'S LIEN,
previously recorded with Cook County Recorded of Deeds as Document #0021413400

Dated: August 1, 2005

All American Roofing, Inc

BY _____

UNOFFICIAL COPY

9717 Bianco Terrace – Des Plaines, IL.

21413400

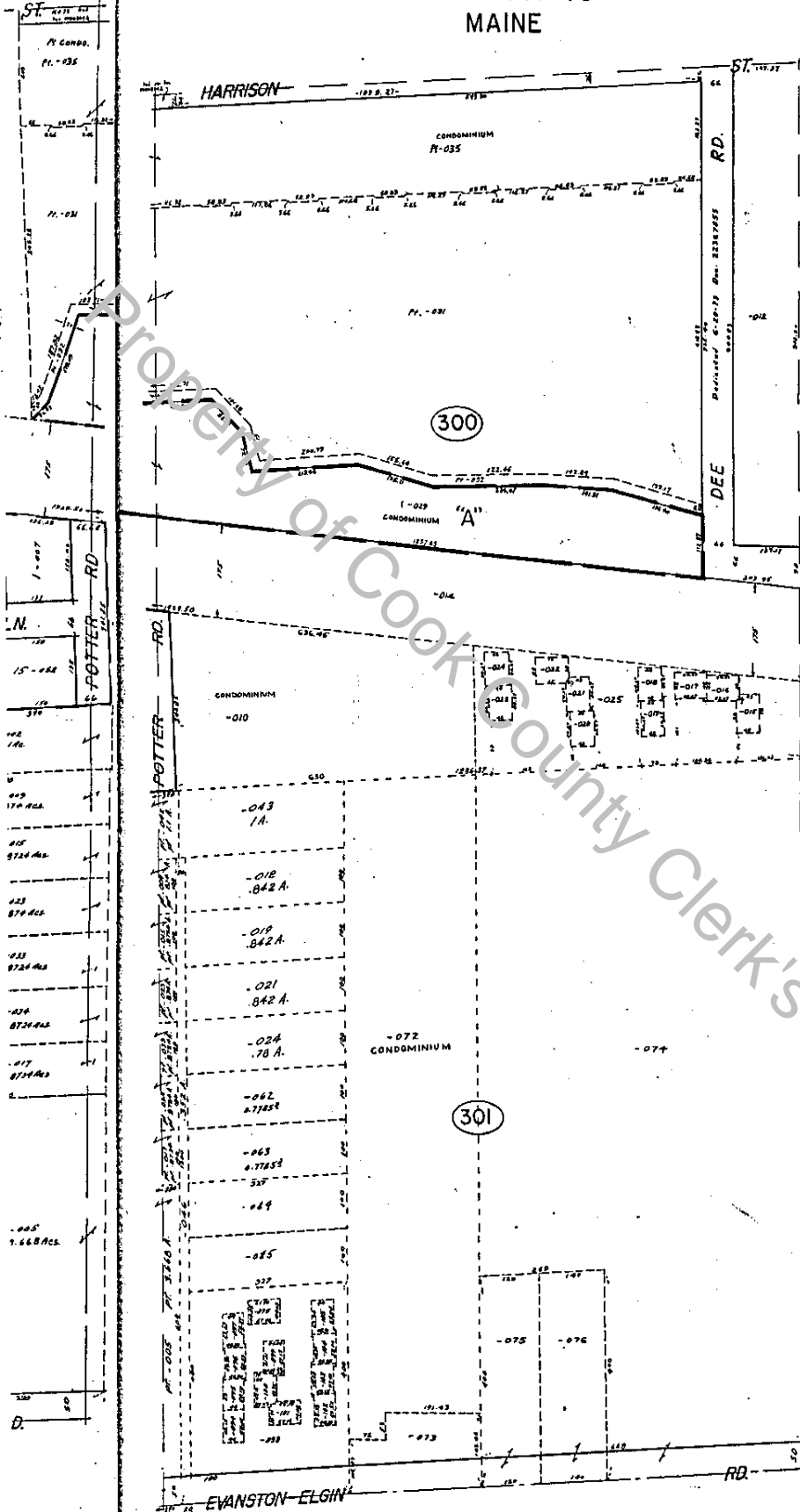
Unit # 119 As delineated on survey of a part of the East 8 acres of the W ½ of the SE ¼ of the S.W ¼ of Section 10 Township 41 North, Range 12, East of the 3rd Principle Meridian in Cook County, IL. Which Survey is attached as exhibit A to declaration of Condo Ownership made by the 1st National Bank of Arlington Heights, as trustee under trust #227. As amended from time to time together with a percentage of the common elements appurtenant to said unit as set forth in said declaration as amended from time to time which percentage shall automatically change in accordance with amended declarations pursuant to said declaration and together with additional common elements such as amended declarations are filed and recorded in the percentage set forth in such amended declarations which percentages shall automatically be deemed to be conveyed effective on the recordings of each such amended declaration as though conveyed hereby

County of Cook County Clerk's Office

UNOFFICIAL COPY

21413400 F 10

E. 1/2 S.W. 1/4 Sec. 10-41-12
MAINE



CONDOMINIUM 09-10-301-072
LA CASA BLANCO CONDOMINIUM
Rec. May 31, 1974 Doc. 21928249
June 30, 1974 21960028
July 15, 1974 22016997
Sept 19, 1974 22055982
Nov. 21, 1974 22149587

UNIT	UNIT	UNIT
U-1	U-27	U-53
U-2	U-28	U-54
U-3	U-29	U-55
U-4	U-30	U-56
U-5	U-31	U-57
U-6	U-32	U-58
U-7	U-33	U-59
U-8	U-34	U-60
U-9	U-35	U-61
U-10	U-36	U-62
U-11	U-37	U-63
U-12	U-38	U-64
U-13	U-39	U-65
U-14	U-40	U-66
U-15	U-41	U-67
U-16	U-42	U-68
U-17	U-43	U-69
U-18	U-44	U-70
U-19	U-45	U-71
U-20	U-46	U-72
U-21	U-47	U-73
U-22	U-48	U-74
U-23	U-49	U-75
U-24	U-50	U-76
U-25	U-51	U-77
U-26	U-52	U-78
U-27	U-53	U-79
U-28	U-54	U-80
U-29	U-55	U-81
U-30	U-56	U-82
U-31	U-57	U-83
U-32	U-58	U-84
U-33	U-59	U-85
U-34	U-60	U-86
U-35	U-61	U-87
U-36	U-62	U-88
U-37	U-63	U-89
U-38	U-64	U-90
U-39	U-65	U-91
U-40	U-66	U-92
U-41	U-67	U-93
U-42	U-68	U-94
U-43	U-69	U-95
U-44	U-70	U-96
U-45	U-71	U-97
U-46	U-72	U-98
U-47	U-73	U-99
U-48	U-74	U-100
U-49	U-75	U-101
U-50	U-76	U-102
U-51	U-77	U-103
U-52	U-78	U-104
U-53	U-79	U-105
U-54	U-80	U-106
U-55	U-81	U-107
U-56	U-82	U-108
U-57	U-83	U-109
U-58	U-84	U-110
U-59	U-85	U-111
U-60	U-86	U-112
U-61	U-87	U-113
U-62	U-88	U-114
U-63	U-89	U-115
U-64	U-90	U-116
U-65	U-91	U-117
U-66	U-92	U-118
U-67	U-93	U-119
U-68	U-94	U-120
U-69	U-95	U-121
U-70	U-96	U-122
U-71	U-97	U-123
U-72	U-98	U-124
U-73	U-99	U-125
U-74	U-100	U-126
U-75	U-101	U-127
U-76	U-102	U-128
U-77	U-103	U-129
U-78	U-104	U-130
U-79	U-105	U-131
U-80	U-106	U-132
U-81	U-107	U-133
U-82	U-108	U-134
U-83	U-109	U-135
U-84	U-110	U-136
U-85	U-111	U-137
U-86	U-112	U-138
U-87	U-113	U-139
U-88	U-114	U-140
U-89	U-115	U-141
U-90	U-116	U-142
U-91	U-117	U-143
U-92	U-118	U-144
U-93	U-119	U-145
U-94	U-120	U-146
U-95	U-121	U-147
U-96	U-122	U-148
U-97	U-123	U-149
U-98	U-124	U-150
U-99	U-125	U-151
U-100	U-126	U-152
U-101	U-127	U-153
U-102	U-128	U-154
U-103	U-129	U-155
U-104	U-130	U-156
U-105	U-131	U-157
U-106	U-132	U-158
U-107	U-133	U-159
U-108	U-134	U-160
U-109	U-135	U-161
U-110	U-136	U-162
U-111	U-137	U-163
U-112	U-138	U-164
U-113	U-139	U-165
U-114	U-140	U-166
U-115	U-141	U-167
U-116	U-142	U-168
U-117	U-143	U-169
U-118	U-144	U-170
U-119	U-145	U-171
U-120	U-146	U-172
U-121	U-147	U-173
U-122	U-148	U-174
U-123	U-149	U-175
U-124	U-150	U-176
U-125	U-151	U-177
U-126	U-152	U-178

CONDOMINIUM 09-10-300-010

HAMILTON COURT CONDOMINIUM
Rec. Oct. 10, 1979 Doc. 23034712

UNIT	UNIT	UNIT
3370-A-101	3370-B-101	3300-C-103
3370-B-101	3370-C-101	3300-D-104
3370-C-101	3300-A-102	3300-B-103
3370-D-101	3300-B-102	3300-C-102
3300-A-101	3300-C-101	3300-D-102
3300-B-101	3300-D-101	3300-A-103
3300-C-101	3300-A-104	3300-B-104
3300-D-101	3300-B-104	3300-C-104
3300-A-102	3300-C-102	3300-D-103
3300-B-102	3300-D-102	3300-A-105
3300-C-102	3300-A-106	3300-B-105
3300-D-102	3300-B-105	3300-C-105
3300-A-103	3300-C-103	3300-D-104
3300-B-103	3300-D-103	3300-A-107
3300-C-103	3300-A-108	3300-B-107
3300-D-103	3300-B-107	3300-C-107
3300-A-104	3300-C-104	3300-D-105
3300-B-104	3300-D-104	3300-A-109
3300-C-104	3300-A-110	3300-B-109
3300-D-104	3300-B-109	3300-C-109
3300-A-105	3300-C-105	3300-D-106
3300-B-105	3300-D-105	3300-A-111
3300-C-105	3300-A-112	3300-B-111
3300-D-105	3300-B-111	3300-C-111
3300-A-106	3300-C-106	3300-D-107
3300-B-106	3300-D-106	3300-A-113
3300-C-106	3300-A-114	3300-B-113
3300-D-106	3300-B-113	3300-C-113
3300-A-107	3300-C-107	3300-D-108
3300-B-107	3300-D-107	3300-A-115
3300-C-107	3300-A-116	3300-B-115
3300-D-107	3300-B-115	3300-C-115

Additional Units Per J

Rec. Mar 31, 1980 Doc. 15407801

UNIT	UNIT	UNIT
3300-A-104	3300-C-063	3300-E-077
3300-B-066	3300-D-064	3300-F-078
3300-C-051	3300-B-065	3300-A-071
3300-D-052	3300-F-066	3300-B-060
3300-E-053	3300-A-067	3300-C-061
3300-F-054	3300-B-068	3300-D-062
3300-A-055	3300-C-069	3300-E-063
3300-B-056	3300-D-070	3300-F-064
3300-C-057	3300-E-071	3300-A-065
3300-D-058	3300-F-072	3300-B-066
3300-E-059	3300-A-073	3300-C-067
3300-F-060	3300-B-074	3300-D-068
3300-A-061	3300-C-075	3300-E-069
3300-B-062	3300-D-076	3300-F-070

REVISED JAN. 1, 2001