

UNOFFICIAL COPY



ALL AMERICAN
EXTERIOR SOLUTIONS

STATE OF ILLINOIS)
)
COUNTY OF COOK)



Doc#: 0521455141
Eugene "Gene" Moore Fee: \$18.00
Cook County Recorder of Deeds
Date: 08/02/2005 04:04 PM Pg: 1 of 3

**RELEASE OF
SUBCONTRACTOR'S NOTICE
AND CLAIM FOR MECHANIC'S
LIEN**

KNOW ALL MEN BY THESE
PRESENTS, All American Roofing, Inc.
Of Lake Zurich Illinois, an Illinois
Corporation, for and in consideration of
The sum of One Thousand Four Hundred
Seventy (\$1,470.00) in

Lawful money of the United States paid to All American Roofing, Inc. at the date hereof,
has remised released and discharged 9717 F Bianco Terrace – Des Plaines, Cook
County and Owner of Record of the following described land in the County of Cook,
State of Illinois, to-wit:

PIN# 09-10-301-072-1120

COMMONLY KNOW AS: 9717 F Bianco Terrace – Des Plaines, IL.

By the presents, docs for all heirs, executors and administrators, remise, release and
discharge the said heirs, executors, and administrators if and for a part of actions, cause,
and causes of action, suites, debts, sums of money, accounts, claims and demands, in law
or in equity and without limiting the generality of the foregoing, release the
SUBCONTRACTORS NOTICE AND CLAIM FOR MECHANIC'S LIEN,
previously recorded with Cook County Recorded of Deeds as Document #0021413401

Dated: August 1, 2005

All American Roofing, Inc.

BY" _____

UNOFFICIAL COPY

21413401

9717 Bianco Terrace – Des Plaines, IL.

Unit # 120 As delineated on survey of a part of the East 8 acres of the W ½ of the SE ¼ of the S.W ¼ of Section 10 Township 41 North, Range 12, East of the 3rd Principle Meridian in Cook County, IL. Which Survey is attached as exhibit A to declaration of Condo Ownership made by the 1st National Bank of Arlington Heights, as trustee under trust #227. As amended from time to time together with a percentage of the common elements affuflenant to said unit as set forth in said declaration as amended from time to time which percentage shall automatically change in accordance with amended declarations nrsuant to said declaration and together with additional common elements such as amended declarations are filed and recorded in the percentage set forth in such amended declarations which percentages shall automatically be deemed to be conveyed effective on the recordings of each such amended declaration as though conveyed hereby

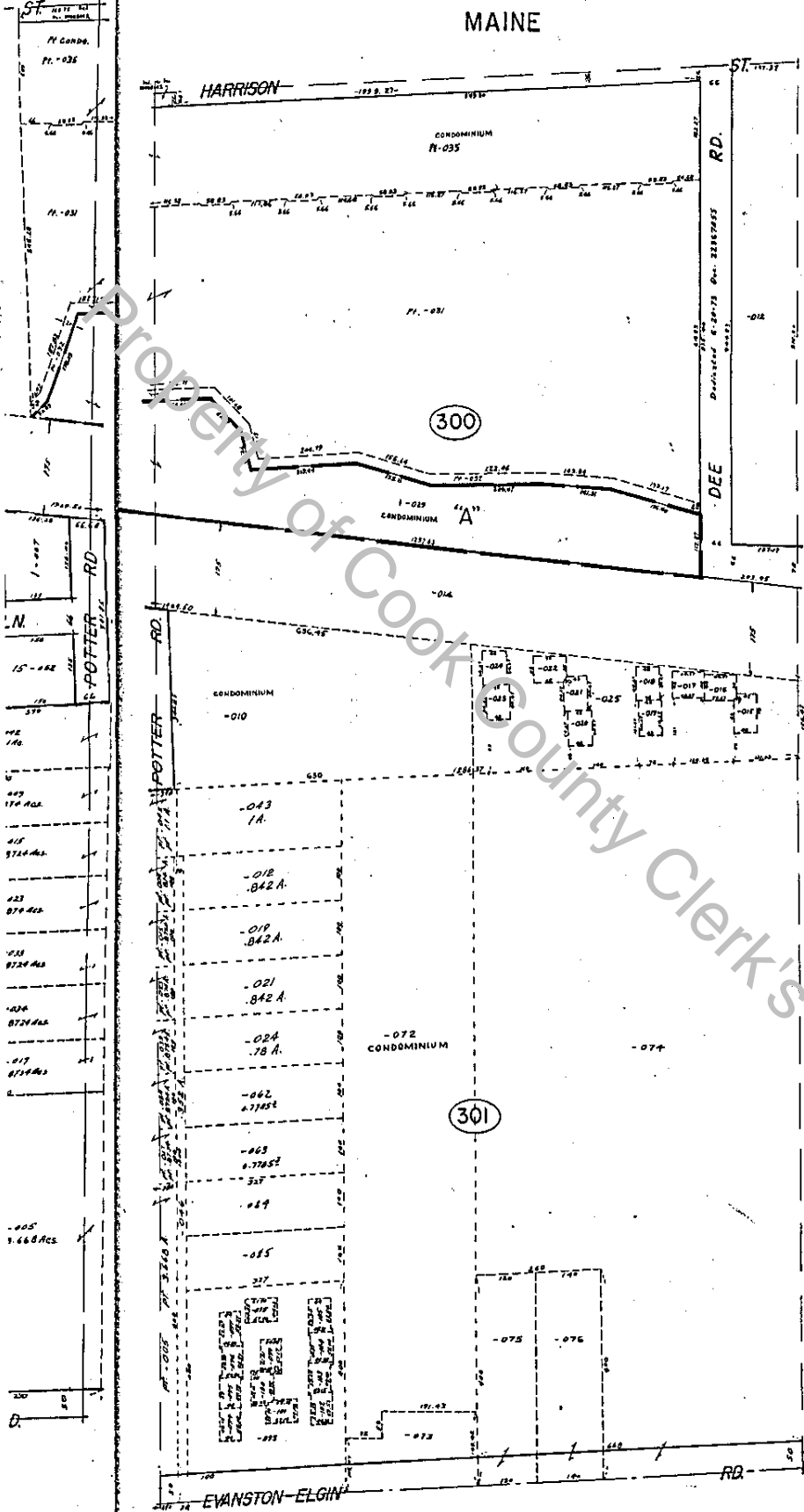
Property of Cook County Clerk's Office

UNOFFICIAL COPY

21413401

E. 1/2 S.W. 1/4 Sec. 10-41-12 MAINE

41-12-10F
9-10



CONDOMINIUM 09-10-301-072
LA CARRA BIANCO CONDOMINIUM
Rec. May 31, 1972 Dec. 21520226
June 30, 1972 21500028
Aug. 15, 1972 22016197
Sept. 30, 1972 22055582
Nov. 29, 1972 22185587

UNIT	UNIT	UNIT
U-1 = 1001 U-77 = 1077 U-93 = 1153		
U-2 = 1002 U-78 = 1078 U-94 = 1154		
U-3 = 1003 U-79 = 1079 U-95 = 1155		
U-4 = 1004 U-80 = 1080 U-96 = 1156		
U-5 = 1005 U-81 = 1081 U-97 = 1157		
U-6 = 1006 U-82 = 1082 U-98 = 1158		
U-7 = 1007 U-83 = 1083 U-99 = 1159		
U-8 = 1008 U-84 = 1084 U-100 = 1160		
U-9 = 1009 U-85 = 1085 U-101 = 1161		
U-10 = 1010 U-86 = 1086 U-102 = 1162		
U-11 = 1011 U-87 = 1087 U-103 = 1163		
U-12 = 1012 U-88 = 1088 U-104 = 1164		
U-13 = 1013 U-89 = 1089 U-105 = 1165		
U-14 = 1014 U-90 = 1090 U-106 = 1166		
U-15 = 1015 U-91 = 1091 U-107 = 1167		
U-16 = 1016 U-92 = 1092 U-108 = 1168		
U-17 = 1017 U-93 = 1093 U-109 = 1169		
U-18 = 1018 U-94 = 1094 U-110 = 1170		
U-19 = 1019 U-95 = 1095 U-111 = 1171		
U-20 = 1020 U-96 = 1096 U-112 = 1172		
U-21 = 1021 U-97 = 1097 U-113 = 1173		
U-22 = 1022 U-98 = 1098 U-114 = 1174		
U-23 = 1023 U-99 = 1099 U-115 = 1175		
U-24 = 1024 U-100 = 1100 U-116 = 1176		
U-25 = 1025 U-101 = 1101 U-117 = 1177		
U-26 = 1026 U-102 = 1102 U-118 = 1178		
U-27 = 1027 U-103 = 1103 U-119 = 1179		
U-28 = 1028 U-104 = 1104 U-120 = 1180		
U-29 = 1029 U-105 = 1105 U-121 = 1181		
U-30 = 1030 U-106 = 1106 U-122 = 1182		
U-31 = 1031 U-107 = 1107 U-123 = 1183		
U-32 = 1032 U-108 = 1108 U-124 = 1184		
U-33 = 1033 U-109 = 1109 U-125 = 1185		
U-34 = 1034 U-110 = 1110 U-126 = 1186		
U-35 = 1035 U-111 = 1111 U-127 = 1187		
U-36 = 1036 U-112 = 1112 U-128 = 1188		
U-37 = 1037 U-113 = 1113 U-129 = 1189		
U-38 = 1038 U-114 = 1114 U-130 = 1190		
U-39 = 1039 U-115 = 1115 U-131 = 1191		
U-40 = 1040 U-116 = 1116 U-132 = 1192		
U-41 = 1041 U-117 = 1117 U-133 = 1193		
U-42 = 1042 U-118 = 1118 U-134 = 1194		
U-43 = 1043 U-119 = 1119 U-135 = 1195		
U-44 = 1044 U-120 = 1120 U-136 = 1196		
U-45 = 1045 U-121 = 1121 U-137 = 1197		
U-46 = 1046 U-122 = 1122 U-138 = 1198		
U-47 = 1047 U-123 = 1123 U-139 = 1199		
U-48 = 1048 U-124 = 1124 U-140 = 1200		
U-49 = 1049 U-125 = 1125 U-141 = 1201		
U-50 = 1050 U-126 = 1126 U-142 = 1202		
U-51 = 1051 U-127 = 1127 U-143 = 1203		
U-52 = 1052 U-128 = 1128 U-144 = 1204		
U-53 = 1053 U-129 = 1129 U-145 = 1205		
U-54 = 1054 U-130 = 1130 U-146 = 1206		
U-55 = 1055 U-131 = 1131 U-147 = 1207		
U-56 = 1056 U-132 = 1132 U-148 = 1208		
U-57 = 1057 U-133 = 1133 U-149 = 1209		
U-58 = 1058 U-134 = 1134 U-150 = 1210		
U-59 = 1059 U-135 = 1135 U-151 = 1211		
U-60 = 1060 U-136 = 1136 U-152 = 1212		
U-61 = 1061 U-137 = 1137 U-153 = 1213		
U-62 = 1062 U-138 = 1138 U-154 = 1214		
U-63 = 1063 U-139 = 1139 U-155 = 1215		
U-64 = 1064 U-140 = 1140 U-156 = 1216		
U-65 = 1065 U-141 = 1141 U-157 = 1217		
U-66 = 1066 U-142 = 1142 U-158 = 1218		
U-67 = 1067 U-143 = 1143 U-159 = 1219		
U-68 = 1068 U-144 = 1144 U-160 = 1220		
U-69 = 1069 U-145 = 1145 U-161 = 1221		
U-70 = 1070 U-146 = 1146 U-162 = 1222		
U-71 = 1071 U-147 = 1147 U-163 = 1223		
U-72 = 1072 U-148 = 1148 U-164 = 1224		
U-73 = 1073 U-149 = 1149 U-165 = 1225		
U-74 = 1074 U-150 = 1150 U-166 = 1226		
U-75 = 1075 U-151 = 1151 U-167 = 1227		
U-76 = 1076 U-152 = 1152 U-168 = 1228		

CONDOMINIUM 09-10-300-070
HAMILTON COURT CONDOMINIUM
Rec. Oct. 30, 1979 Dec. 25103472

UNIT	UNIT	UNIT
3310-A-1001 3378-B-1017 3300-C-1003		
3310-B-1002 3378-B-1018 3300-C-1004		
3310-C-1003 3346-A-1019 3340-D-1032		
3310-D-1033 3346-B-1020 3340-E-1033		
3310-E-1034 3346-C-1021 3303-F-1037		
3340-F-1038 3346-D-1022 3300-G-1030		
3340-G-1031 3346-E-1023 3300-H-1039		
3340-H-1040 3346-F-1024 3300-I-1040		
3340-I-1041 3346-G-1025 3300-J-1041		
3340-J-1042 3346-H-1026 3300-K-1042		
3340-K-1043 3346-I-1027 3300-L-1043		
3340-L-1044 3346-J-1028 3300-M-1044		
3340-M-1045 3346-K-1029 3300-N-1045		
3340-N-1046 3346-L-1030 3300-O-1046		
3340-O-1047 3346-M-1031 3300-P-1047		
3340-P-1048 3346-N-1032 3300-Q-1048		
3340-Q-1049 3346-O-1033 3300-R-1049		
3340-R-1050 3346-P-1034 3300-S-1050		
3340-S-1051 3346-Q-1035 3300-T-1051		
3340-T-1052 3346-R-1036 3300-U-1052		
3340-U-1053 3346-S-1037 3300-V-1053		
3340-V-1054 3346-T-1038 3300-W-1054		
3340-W-1055 3346-U-1039 3300-X-1055		
3340-X-1056 3346-V-1040 3300-Y-1056		
3340-Y-1057 3346-W-1041 3300-Z-1057		
3340-Z-1058 3346-X-1042 3300-AA-1058		
3340-AA-1059 3346-Y-1043 3300-AB-1059		
3340-AB-1060 3346-Z-1044 3300-AC-1060		
3340-AC-1061 3346-AA-1045 3300-AD-1061		
3340-AD-1062 3346-AB-1046 3300-AE-1062		
3340-AE-1063 3346-AC-1047 3300-AF-1063		
3340-AF-1064 3346-AD-1048 3300-AG-1064		
3340-AG-1065 3346-AE-1049 3300-AH-1065		
3340-AH-1066 3346-AF-1050 3300-AI-1066		
3340-AI-1067 3346-AG-1051 3300-AJ-1067		
3340-AJ-1068 3346-AH-1052 3300-AK-1068		
3340-AK-1069 3346-AI-1053 3300-AL-1069		
3340-AL-1070 3346-AJ-1054 3300-AM-1070		
3340-AM-1071 3346-AK-1055 3300-AN-1071		
3340-AN-1072 3346-AL-1056 3300-AO-1072		
3340-AO-1073 3346-AM-1057 3300-AP-1073		
3340-AP-1074 3346-AN-1058 3300-AQ-1074		
3340-AQ-1075 3346-AO-1059 3300-AR-1075		
3340-AR-1076 3346-AP-1060 3300-AS-1076		
3340-AS-1077 3346-AQ-1061 3300-AT-1077		
3340-AT-1078 3346-AR-1062 3300-AU-1078		

ADDITIONAL UNITS Per J
Rec. Mar. 31, 1980 Dec. 25407501

UNIT	UNIT	UNIT
3300-A-1071 3320-C-1063 3310-E-1077		
3300-B-1072 3320-D-1064 3310-F-1078		
3300-C-1073 3320-E-1065 3300-A-1079		
3300-D-1074 3320-F-1066 3300-B-1080		
3300-E-1075 3320-G-1067 3300-C-1081		
3300-F-1076 3320-H-1068 3300-D-1082		
3300-G-1077 3320-I-1069 3300-E-1083		
3300-H-1078 3320-J-1070 3300-F-1084		
3300-I-1079 3320-K-1071 3300-G-1085		
3300-J-1080 3320-L-1072 3300-H-1086		
3300-K-1081 3320-M-1073 3300-I-1087		
3300-L-1082 3320-N-1074 3300-J-1088		
3300-M-1083 3320-O-1075 3300-K-1089		
3300-N-1084 3320-P-1076 3300-L-1090		
3300-O-1085 3320-Q-1077 3300-M-1091		
3300-P-1086 3320-R-1078 3300-N-1092		
3300-Q-1087 3320-S-1079 3300-O-1093		
3300-R-1088 3320-T-1080 3300-P-1094		
3300-S-1089 3320-U-1081 3300-Q-1095		
3300-T-1090 3320-V-1082 3300-R-1096		
3300-U-1091 3320-W-1083 3300-S-1097		
3300-V-1092 3320-X-1084 3300-T-1098		
3300-W-1093 3320-Y-1085 3300-U-1099		
3300-X-1094 3320-Z-1086 3300-V-1100		
3300-Y-1095 3320-AA-1087 3300-W-1101		
3300-Z-1096 3320-AB-1088 3300-X-1102		
3300-AA-1097 3320-AC-1089 3300-Y-1103		
3300-AB-1098 3320-AD-1090 3300-Z-1104		
3300-AC-1099 3320-AE-1091 3300-AA-1105		
3300-AD-1100 3320-AF-1092 3300-AB-1106		
3300-AE-1101 3320-AG-1093 3300-AC-1107		
3300-AF-1102 3320-AH-1094 3300-AD-1108		
3300-AG-1103 3320-AI-1095 3300-AE-1109		
3300-AH-1104 3320-AJ-1096 3300-AF-1110		
3300-AI-1105 3320-AK-1097 3300-AG-1111		
3300-AJ-1106 3320-AL-1098 3300-AH-1112		
3300-AK-1107 3320-AM-1099 3300-AI-1113		
3300-AL-1108 3320-AO-1100 3300-AJ-1114		
3300-AM-1109 3320-AN-1101 3300-AK-1115		
3300-AN-1110 3320-AP-1102 3300-AL-1116		
3300-AO-1111 3320-AQ-1103 3300-AM-1117		
3300-AP-1112 3320-AR-1104 3300-AN-1118		
3300-AQ-1113 3320-AS-1105 3300-AO-1119		
3300-AR-1114 3320-AT-1106 3300-AP-1120		
3300-AS-1115 3320-AU-1107 3300-AQ-1121		
3300-AT-1116 3320-AV-1108 3300-AR-1122		
3300-AU-1117 3320-AW-1109 3300-AS-1123		
3300-AV-1118 3320-AX-1110 3300-AT-1124		
3300-AW-1119 3320-AY-1111 3300-AU-1125		
3300-AX-1120 3320-AZ-1112 3300-AV-1126		
3300-AY-1121 3320-BA-1113 3300-AW-1127		
3300-AZ-1122 3320-BB-1114 3300-AX-1128		
3300-BA-1123 3320-BC-1115 3300-AY-1129		
3300-BB-1124 3320-BD-1116 3300-AZ-1130		
3300-BC-1125 3320-BE-1117 3300-BA-1131		
3300-BD-1126 3320-BF-1118 3300-BB-1132		
3300-BE-1127 3320-BG-1119 3300-BC-1133		
3300-BF-1128 3320-BH-1120 3300-BD-1134		
3300-BG-1129 3320-BI-1121 3300-BE-1135		
3300-BH-1130 3320-BJ-1122 3300-BF-1136		
3300-BI-1131 3320-BK-1123 3300-BG-1137		
3300-BJ-1132 3320-BL-1124 3300-BH-1138		
3300-BK-1133 3320-BM-1125 3300-BI-1139		
3300-BL-1134 3320-BN-1126 3300-BJ-1140		
3300-BM-1135 3320-BO-1127 3300-BK-1141		
3300-BN-1136 3320-BP-1128 3300-BL-1142		
3300-BO-1137 3320-BQ-1129 3300-BM-1143		
3300-BP-1138 3320-BR-1130 3300-BN-1144		
3300-BQ-1139 3320-BS-1131 3300-BO-1145		
3300-BR-1140 3320-BT-1132 3300-BP-1146		
3300-BS-1141 3320-BU-1133 3300-BQ-1147		
3300-BT-1142 3320-BV-1134 3300-BR-1148		
3300-BU-1143 3320-BW-1135 3300-BS-1149		
3300-BV-1144 3320-BX-1136 3300-BT-1150		
3300-BW-1145 3320-BY-1137 3300-BU-1151		
3300-BX-1146 3320-BZ-1138 3300-BV-1152		
3300-BY-1147 3320-CA-1139 3300-BW-1153		
3300-BZ-1148 3320-CB-1140 3300-BX-1154		
3300-CA-1149 3320-CC-1141 3300-CB-1155		
3300-CB-1156 3320-CD-1142 3300-CC-1156		
3300-CC-1157 3320-CE-1143 3300-CD-1157		
3300-CD-1158 3320-CE-1144 3300-CE-1158		
3300-CE-1159 3320-CE-1145 3300-CE-1159		
3300-CE-1160 3320-CE-1146 3300-CE-1160		
3300-CE-1161 3320-CE-1147 3300-CE-1161		
3300-CE-1162 3320-CE-1148 3300-CE-1162		
3300-CE-1163 3320-CE-1149 3300-CE-1163		
3300-CE-1164 3320-CE-1150 3300-CE-1164		
3300-CE-1165 3320-CE-1151 3300-CE-1165		
3300-CE-1166 3320-CE-1152 3300-CE-1166		
3300-CE-1167 3320-CE-1153 3300-CE-1167		
3300-CE-1168 3320-CE-1154 3300-CE-1168		
3300-CE-1169 3320-CE-1155 3300-CE-1169		
3300-CE-1170 3320-CE-1156 3300-CE-1170		
3300-CE-1171 3320-CE-1157 3300-CE-1171		
3300-CE-1172 3320-CE-1158 3300-CE-1172		
3300-CE-1173 3320-CE-1159 3300-CE-1173		
3300-CE-1174 3320-CE-1160 3300-CE-1174		
3300-CE-1175 3320-CE-1161 3300-CE-1175		
3300-CE-1176 3320-CE-1162 3300-CE-1176		
3300-CE-1177 3320-CE-1163 3300-CE-1177		
3300-CE-1178 3320-CE-1164 3300-CE-1178		
3300-CE-1179 3320-CE-1165 3300-CE-1179		
3300-CE-1180 3320-CE-1166 3300-CE-1180		
3300-CE-1181 3320-CE-1167 3300-CE-1181		
3300-CE-1182 3320-CE-1168 3300-CE-1182		
3300-CE-1183 3320-CE-1169 3300-CE-1183		
3300-CE-1184 3320-CE-1170 3300-CE-1184		
3300-CE-1185 3320-CE-1171 3300-CE-1185		
3300-CE-1186 3320-CE-1172 3300-CE-1186		
3300-CE-1187 3320-CE-1173 3300-CE-1187		
3300-CE-1188 3320-CE-1174 3300-CE-1188		
3300-CE-1189 3320-CE-1175 3300-CE-1189		
3300-CE-1190 3320-CE-1176 3300-CE-1190		
3300-CE-1191 3320-CE-1177 3300-CE-1191		
3300-CE-1192 3320-CE-1178 3300-CE-1192		
3300-CE-1193 3320-CE-1179 3300-CE-1193		
3300-CE-1194 3320-CE-1180 3300-CE-1194		
3300-CE-1195 3320-CE-1181 3300-CE-1195		
3300-CE-1196 3320-CE-1182 3300-CE-1196		
3300-CE-1197 3320-CE-1183 3300-CE-1197		
3300-CE-1198 3320-CE-1184 3300-CE-1198		
3300-CE-1199 3320-CE-1185 3300-CE-1199		
3300-CE-1200 3320-CE-1186 3300-CE-1200		