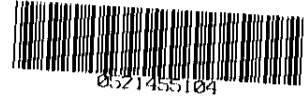


STATE OF ILLINOIS)
)
COUNTY OF COOK)



Doc#: 0521455104
Eugene "Gene" Moore Fee: \$18.00
Cook County Recorder of Deeds
Date: 08/02/2005 04:03 PM Pg: 1 of 3

**RELEASE OF
SUBCONTRACTOR'S NOTICE
AND CLAIM FOR MECHANIC'S
LIEN**

KNOW ALL MEN BY THESE
PRESENTS, All American Roofing, Inc.
Of Lake Zurich, Illinois, an Illinois
Corporation, for and in consideration of
The sum of One Thousand Five Hundred
Two 50/100 (\$1,502.50) in

Lawful money of the United States paid to All American Roofing, Inc. at the date hereof,
has remised released and discharged 9814 E Bianco Terrace – Des Plaines, Cook
County and Owner of Record of the following described land in the County of Cook,
State of Illinois, to-wit:

PIN# 09-10-301-072-1191

COMMONLY KNOW AS: 9814 E Bianco Terrace – Des Plaines, IL.

By the presents, docs for all heirs, executors and administrators, remise, release and
discharge the said heirs, executors, and administrators of and for a part of actions, cause,
and causes of action, suites, debts, sums of money, accounts, claims and demands, in law
or in equity and without limiting the generality of the foregoing, release the
SUBCONTRACTORS NOTICE AND CLAIM FOR MECHANIC'S LIEN
previously recorded with Cook County Recorded of Deeds as Document #0021413412

Dated: August 1, 2005

All American Roofing, Inc.

BY" _____

UNOFFICIAL COPY

21413412

9814 Bianco Terrace – Des Plaines, IL.

Unit # 191 As delineated on survey of a part of the East 8 acres of the W ½ of the SE ¼ of the S.W ¼ of Section 10 Township 41 North, Range 12, East of the 3rd Principle Meridian in Cook County, IL. Which Survey is attached as exhibit A to declaration of Condo Ownership made by the 1st National Bank of Arlington Heights, as trustee under trust #227. As amended from time to time together with a percentage of the common elements affuflenant to said unit as set forth in said declaration as amended from time to time which percentage shall automatically change in accordance with amended declarations pursuant to said declaration and together with additional common elements such as amended declarations are filed and recorded in the percentage set forth in such amended declarations which percentages shall automatically be deemed to be conveyed effective on the recordings of each such amended declaration as though conveyed hereby

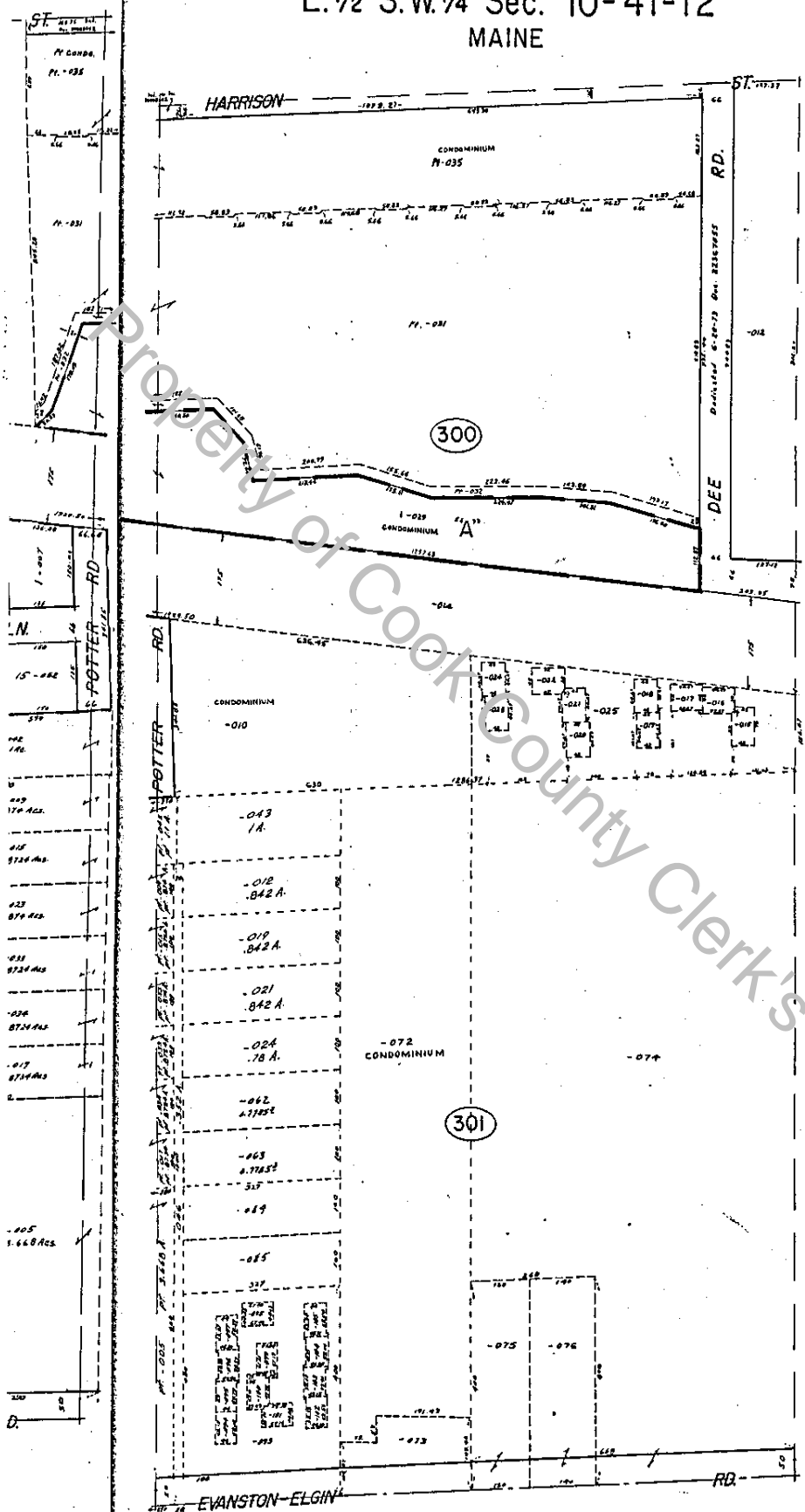
Property of Cook County Clerk's Office

UNOFFICIAL COPY

21413412

E. 1/2 S.W. 1/4 Sec. 10-41-12
MAINE

41-12-10F
9-10



CONDOMINIUM 09-10-001-072
LA CABA BIANCA CONDOMINIUM
Res. Mch 31, 1972 Doc. 2192429
June 30, 1972 2192439
July 15, 1972 2216997
Sept. 10, 1972 2205502
Nov. 29, 1972 2218587

UNIT	UNIT	UNIT
U-1 = 1001	U-77 = 11077	U-15 = 1115
U-2 = 1002	U-78 = 11078	U-16 = 1116
U-3 = 1003	U-79 = 11079	U-17 = 1117
U-4 = 1004	U-80 = 11080	U-18 = 1118
U-5 = 1005	U-81 = 11081	U-19 = 1119
U-6 = 1006	U-82 = 11082	U-20 = 1120
U-7 = 1007	U-83 = 11083	U-21 = 1121
U-8 = 1008	U-84 = 11084	U-22 = 1122
U-9 = 1009	U-85 = 11085	U-23 = 1123
U-10 = 1010	U-86 = 11086	U-24 = 1124
U-11 = 1011	U-87 = 11087	U-25 = 1125
U-12 = 1012	U-88 = 11088	U-26 = 1126
U-13 = 1013	U-89 = 11089	U-27 = 1127
U-14 = 1014	U-90 = 11090	U-28 = 1128
U-15 = 1015	U-91 = 11091	U-29 = 1129
U-16 = 1016	U-92 = 11092	U-30 = 1130
U-17 = 1017	U-93 = 11093	U-31 = 1131
U-18 = 1018	U-94 = 11094	U-32 = 1132
U-19 = 1019	U-95 = 11095	U-33 = 1133
U-20 = 1020	U-96 = 11096	U-34 = 1134
U-21 = 1021	U-97 = 11097	U-35 = 1135
U-22 = 1022	U-98 = 11098	U-36 = 1136
U-23 = 1023	U-99 = 11099	U-37 = 1137
U-24 = 1024	U-100 = 11100	U-38 = 1138
U-25 = 1025	U-101 = 11101	U-39 = 1139
U-26 = 1026	U-102 = 11102	U-40 = 1140
U-27 = 1027	U-103 = 11103	U-41 = 1141
U-28 = 1028	U-104 = 11104	U-42 = 1142
U-29 = 1029	U-105 = 11105	U-43 = 1143
U-30 = 1030	U-106 = 11106	U-44 = 1144
U-31 = 1031	U-107 = 11107	U-45 = 1145
U-32 = 1032	U-108 = 11108	U-46 = 1146
U-33 = 1033	U-109 = 11109	U-47 = 1147
U-34 = 1034	U-110 = 11110	U-48 = 1148
U-35 = 1035	U-111 = 11111	U-49 = 1149
U-36 = 1036	U-112 = 11112	U-50 = 1150
U-37 = 1037	U-113 = 11113	U-51 = 1151
U-38 = 1038	U-114 = 11114	U-52 = 1152
U-39 = 1039	U-115 = 11115	U-53 = 1153
U-40 = 1040	U-116 = 11116	U-54 = 1154
U-41 = 1041	U-117 = 11117	U-55 = 1155
U-42 = 1042	U-118 = 11118	U-56 = 1156
U-43 = 1043	U-119 = 11119	U-57 = 1157
U-44 = 1044	U-120 = 11120	U-58 = 1158
U-45 = 1045	U-121 = 11121	U-59 = 1159
U-46 = 1046	U-122 = 11122	U-60 = 1160
U-47 = 1047	U-123 = 11123	U-61 = 1161
U-48 = 1048	U-124 = 11124	U-62 = 1162
U-49 = 1049	U-125 = 11125	U-63 = 1163
U-50 = 1050	U-126 = 11126	U-64 = 1164
U-51 = 1051	U-127 = 11127	U-65 = 1165
U-52 = 1052	U-128 = 11128	U-66 = 1166
U-53 = 1053	U-129 = 11129	U-67 = 1167
U-54 = 1054	U-130 = 11130	U-68 = 1168
U-55 = 1055	U-131 = 11131	U-69 = 1169
U-56 = 1056	U-132 = 11132	U-70 = 1170
U-57 = 1057	U-133 = 11133	U-71 = 1171
U-58 = 1058	U-134 = 11134	U-72 = 1172
U-59 = 1059	U-135 = 11135	U-73 = 1173
U-60 = 1060	U-136 = 11136	U-74 = 1174
U-61 = 1061	U-137 = 11137	U-75 = 1175
U-62 = 1062	U-138 = 11138	U-76 = 1176
U-63 = 1063	U-139 = 11139	U-77 = 1177
U-64 = 1064	U-140 = 11140	U-78 = 1178
U-65 = 1065	U-141 = 11141	U-79 = 1179
U-66 = 1066	U-142 = 11142	U-80 = 1180
U-67 = 1067	U-143 = 11143	U-81 = 1181
U-68 = 1068	U-144 = 11144	U-82 = 1182
U-69 = 1069	U-145 = 11145	U-83 = 1183
U-70 = 1070	U-146 = 11146	U-84 = 1184
U-71 = 1071	U-147 = 11147	U-85 = 1185
U-72 = 1072	U-148 = 11148	U-86 = 1186
U-73 = 1073	U-149 = 11149	U-87 = 1187
U-74 = 1074	U-150 = 11150	U-88 = 1188
U-75 = 1075	U-151 = 11151	U-89 = 1189
U-76 = 1076	U-152 = 11152	U-90 = 1190

CONDOMINIUM 09-10-002-010
HAMILTON COURT CONDOMINIUM
Res. Oct. 10, 1972 Doc. 2510342

UNIT	UNIT	UNIT
930-A-1001	930-B-1001	930-C-1001
930-A-1002	930-B-1002	930-C-1002
930-A-1003	930-B-1003	930-C-1003
930-A-1004	930-B-1004	930-C-1004
930-A-1005	930-B-1005	930-C-1005
930-A-1006	930-B-1006	930-C-1006
930-A-1007	930-B-1007	930-C-1007
930-A-1008	930-B-1008	930-C-1008
930-A-1009	930-B-1009	930-C-1009
930-A-1010	930-B-1010	930-C-1010
930-A-1011	930-B-1011	930-C-1011
930-A-1012	930-B-1012	930-C-1012
930-A-1013	930-B-1013	930-C-1013
930-A-1014	930-B-1014	930-C-1014
930-A-1015	930-B-1015	930-C-1015
930-A-1016	930-B-1016	930-C-1016
930-A-1017	930-B-1017	930-C-1017
930-A-1018	930-B-1018	930-C-1018
930-A-1019	930-B-1019	930-C-1019
930-A-1020	930-B-1020	930-C-1020
930-A-1021	930-B-1021	930-C-1021
930-A-1022	930-B-1022	930-C-1022
930-A-1023	930-B-1023	930-C-1023
930-A-1024	930-B-1024	930-C-1024
930-A-1025	930-B-1025	930-C-1025
930-A-1026	930-B-1026	930-C-1026
930-A-1027	930-B-1027	930-C-1027
930-A-1028	930-B-1028	930-C-1028
930-A-1029	930-B-1029	930-C-1029
930-A-1030	930-B-1030	930-C-1030
930-A-1031	930-B-1031	930-C-1031
930-A-1032	930-B-1032	930-C-1032
930-A-1033	930-B-1033	930-C-1033
930-A-1034	930-B-1034	930-C-1034
930-A-1035	930-B-1035	930-C-1035
930-A-1036	930-B-1036	930-C-1036
930-A-1037	930-B-1037	930-C-1037
930-A-1038	930-B-1038	930-C-1038
930-A-1039	930-B-1039	930-C-1039
930-A-1040	930-B-1040	930-C-1040

REVISED JAN. 1, 2001