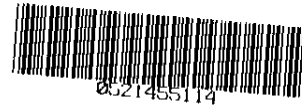


UNOFFICIAL COPY



ALL AMERICAN  
EXTERIOR SOLUTIONS

STATE OF ILLINOIS )  
                                  )  
COUNTY OF COOK )



Doc#: 0521455114  
Eugene "Gene" Moore Fee: \$18.00  
Cook County Recorder of Deeds  
Date: 08/02/2005 04:03 PM Pg: 1 of 3

**RELEASE OF  
SUBCONTRACTOR'S NOTICE  
AND CLAIM FOR MECHANIC'S  
LIEN**

KNOW ALL MEN BY THESE PRESENTS, All American Roofing, Inc. Of Lake Zurich, Illinois, an Illinois Corporation, for and in consideration of The sum of One Thousand Five Hundred Fifty Seven 50/100 (\$1,557.50) in Lawful money of the United States paid to All American Roofing, Inc. at the date hereof, has remised released and discharged 9821 C Bianco Terrace – Des Plaines, Cook County and Owner of Record of the following described land in the County of Cook, State of Illinois, to-wit:

**PIN# 09-10-301-072-1225**  
**COMMONLY KNOW AS: 9821 C Bianco Terrace – Des Plaines, IL.**

By the presents, docs for all heirs, executors and administrators, remise, release and discharge the said heirs, executors, and administrators, if and for a part of actions, cause, and causes of action, suites, debts, sums of money, accounts, claims and demands, in law or in equity and without limiting the generality of the foregoing, release the **SUBCONTRACTORS NOTICE AND CLAIM FOR MECHANIC'S LIEN**, previously recorded with Cook County Recorded of Deeds as Document #0021413416

Dated: August 1, 2005

All American Roofing, Inc.

BY" \_\_\_\_\_

**UNOFFICIAL COPY****21413416**

9821 Bianco Terrace – Des Plaines, IL.

Unit # 225 As delineated on survey of a part of the East 8 acres of the W ½ of the SE ¼ of the S.W ¼ of Section 10 Township 41 North, Range 12, East of the 3<sup>rd</sup> Principle Meridian in Cook County, IL. Which Survey is attached as exhibit A to declaration of Condo Ownership made by the 1<sup>st</sup> National Bank of Arlington Heights, as trustee under trust #227. As amended from time to time together with a percentage of the common elements affuflenant to said unit as set forth in said declaration as amended from time to time which percentage shall automatically change in accordance with amended declarations pursuant to said declaration and together with additional common elements such as amended declarations are filed and recorded in the percentage set forth in such amended declarations which percentages shall automatically be deemed to be conveyed effective on the recordings of each such amended declaration as though conveyed hereby

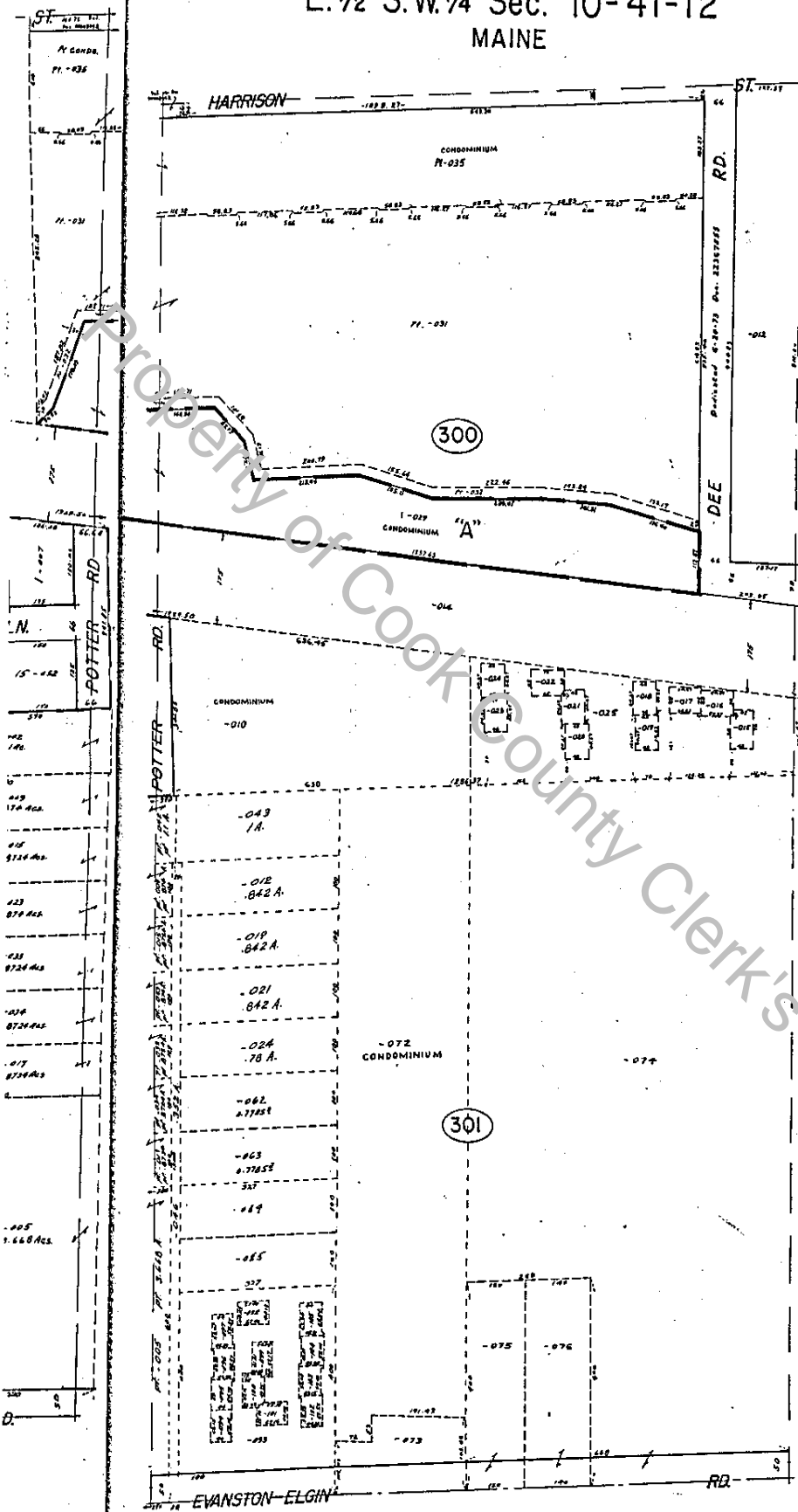
PROPERTY of Cook County Clerk's Office

UNOFFICIAL COPY

2147416

E. 1/2 S.W. 1/4 Sec. 10-41-12  
MAINE

41-12-10F  
9-10



CONDOMINIUM 09-10-301-872  
LA. CARRIANCE CONDOMINIUM  
Res. May 31, 1975 Dec. 21, 1975  
June 30, 1975 21904038  
Aug. 15, 1975 22016997  
Sept. 30, 1975 22025496  
Nov. 21, 1975 22110897

UNIT	UNIT	UNIT
U-1 = 1001	U-77 = 1177	U-103 = 1183
U-2 = 1002	U-78 = 1178	U-104 = 1184
U-3 = 1003	U-79 = 1179	U-105 = 1185
U-4 = 1004	U-80 = 1180	U-106 = 1186
U-5 = 1005	U-81 = 1181	U-107 = 1187
U-6 = 1006	U-82 = 1182	U-108 = 1188
U-7 = 1007	U-83 = 1183	U-109 = 1189
U-8 = 1008	U-84 = 1184	U-110 = 1190
U-9 = 1009	U-85 = 1185	U-111 = 1191
U-10 = 1010	U-86 = 1186	U-112 = 1192
U-11 = 1011	U-87 = 1187	U-113 = 1193
U-12 = 1012	U-88 = 1188	U-114 = 1194
U-13 = 1013	U-89 = 1189	U-115 = 1195
U-14 = 1014	U-90 = 1190	U-116 = 1196
U-15 = 1015	U-91 = 1191	U-117 = 1197
U-16 = 1016	U-92 = 1192	U-118 = 1198
U-17 = 1017	U-93 = 1193	U-119 = 1199
U-18 = 1018	U-94 = 1194	U-120 = 1200
U-19 = 1019	U-95 = 1195	U-121 = 1201
U-20 = 1020	U-96 = 1196	U-122 = 1202
U-21 = 1021	U-97 = 1197	U-123 = 1203
U-22 = 1022	U-98 = 1198	U-124 = 1204
U-23 = 1023	U-99 = 1199	U-125 = 1205
U-24 = 1024	U-100 = 1200	U-126 = 1206
U-25 = 1025	U-101 = 1201	U-127 = 1207
U-26 = 1026	U-102 = 1202	U-128 = 1208
U-27 = 1027	U-103 = 1203	U-129 = 1209
U-28 = 1028	U-104 = 1204	U-130 = 1210
U-29 = 1029	U-105 = 1205	U-131 = 1211
U-30 = 1030	U-106 = 1206	U-132 = 1212
U-31 = 1031	U-107 = 1207	U-133 = 1213
U-32 = 1032	U-108 = 1208	U-134 = 1214
U-33 = 1033	U-109 = 1209	U-135 = 1215
U-34 = 1034	U-110 = 1210	U-136 = 1216
U-35 = 1035	U-111 = 1211	U-137 = 1217
U-36 = 1036	U-112 = 1212	U-138 = 1218
U-37 = 1037	U-113 = 1213	U-139 = 1219
U-38 = 1038	U-114 = 1214	U-140 = 1220
U-39 = 1039	U-115 = 1215	U-141 = 1221
U-40 = 1040	U-116 = 1216	U-142 = 1222
U-41 = 1041	U-117 = 1217	U-143 = 1223
U-42 = 1042	U-118 = 1218	U-144 = 1224
U-43 = 1043	U-119 = 1219	U-145 = 1225
U-44 = 1044	U-120 = 1220	U-146 = 1226
U-45 = 1045	U-121 = 1221	U-147 = 1227
U-46 = 1046	U-122 = 1222	U-148 = 1228
U-47 = 1047	U-123 = 1223	U-149 = 1229
U-48 = 1048	U-124 = 1224	U-150 = 1230
U-49 = 1049	U-125 = 1225	U-151 = 1231
U-50 = 1050	U-126 = 1226	U-152 = 1232
U-51 = 1051	U-127 = 1227	U-153 = 1233
U-52 = 1052	U-128 = 1228	U-154 = 1234
U-53 = 1053	U-129 = 1229	U-155 = 1235
U-54 = 1054	U-130 = 1230	U-156 = 1236
U-55 = 1055	U-131 = 1231	U-157 = 1237
U-56 = 1056	U-132 = 1232	U-158 = 1238
U-57 = 1057	U-133 = 1233	U-159 = 1239
U-58 = 1058	U-134 = 1234	U-160 = 1240
U-59 = 1059	U-135 = 1235	U-161 = 1241
U-60 = 1060	U-136 = 1236	U-162 = 1242
U-61 = 1061	U-137 = 1237	U-163 = 1243
U-62 = 1062	U-138 = 1238	U-164 = 1244
U-63 = 1063	U-139 = 1239	U-165 = 1245
U-64 = 1064	U-140 = 1240	U-166 = 1246
U-65 = 1065	U-141 = 1241	U-167 = 1247
U-66 = 1066	U-142 = 1242	U-168 = 1248
U-67 = 1067	U-143 = 1243	U-169 = 1249
U-68 = 1068	U-144 = 1244	U-170 = 1250
U-69 = 1069	U-145 = 1245	U-171 = 1251
U-70 = 1070	U-146 = 1246	U-172 = 1252
U-71 = 1071	U-147 = 1247	U-173 = 1253
U-72 = 1072	U-148 = 1248	U-174 = 1254
U-73 = 1073	U-149 = 1249	U-175 = 1255
U-74 = 1074	U-150 = 1250	U-176 = 1256
U-75 = 1075	U-151 = 1251	U-177 = 1257
U-76 = 1076	U-152 = 1252	U-178 = 1258

CONDOMINIUM 09-10-300-018  
HAMILTON COURT CONDOMINIUMS  
Res. Dec. 10, 1975 Dec. 21, 1975

UNIT	UNIT	UNIT
330-D-1001	337B-A-1017	337C-C-1033
330-D-1002	337B-B-1018	337C-D-1034
330-D-1003	337B-C-1019	337C-E-1035
330-D-1004	337B-D-1020	337C-F-1036
330-D-1005	337B-E-1021	337C-G-1037
330-D-1006	337B-F-1022	337C-H-1038
330-D-1007	337B-G-1023	337C-I-1039
330-D-1008	337B-H-1024	337C-J-1040
330-D-1009	337B-I-1025	337C-K-1041
330-D-1010	337B-L-1026	337C-L-1042
330-D-1011	337B-M-1027	337C-M-1043
330-D-1012	337B-N-1028	337C-O-1044
337B-A-1013	337B-P-1029	337C-P-1045
337B-B-1014	337B-Q-1030	337C-Q-1046
337B-C-1015	337B-R-1031	337C-R-1047
337B-D-1016	337B-S-1032	337B-S-1048

446 Model Unit 9  
Res. Nov. 21, 1980 Dec. 21, 1980

UNIT	UNIT	UNIT
930-A-1049	930-C-1063	930-E-1077
930-B-1050	930-D-1064	930-F-1078
930-C-1051	930-E-1065	930-G-1079
930-D-1052	930-F-1066	930-H-1080
930-E-1053	930-G-1067	930-I-1081
930-F-1054	930-H-1068	930-J-1082
930-G-1055	930-I-1069	930-K-1083
930-H-1056	930-J-1070	930-L-1084
930-I-1057	930-K-1071	930-M-1085
930-J-1058	930-L-1072	930-N-1086
930-K-1059	930-M-1073	930-O-1087
930-L-1060	930-N-1074	930-P-1088
930-M-1061	930-O-1075	930-Q-1089
930-N-1062	930-P-1076	930-R-1090

REVISED JAN. 1, 2001