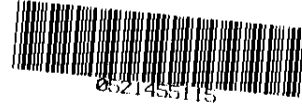


UNOFFICIAL COPY



ALL AMERICAN  
EXTERIOR SOLUTIONS

STATE OF ILLINOIS )  
                                  )  
COUNTY OF COOK )



Doc#: 0521455115  
Eugene "Gene" Moore Fee: \$18.00  
Cook County Recorder of Deeds  
Date: 08/02/2005 04:03 PM Pg: 1 of 3

**RELEASE OF  
SUBCONTRACTOR'S NOTICE  
AND CLAIM FOR MECHANIC'S  
LIEN**

KNOW ALL MEN BY THESE  
PRESENTS, All American Roofing, Inc.  
Of Lake Zurich, Illinois, an Illinois  
Corporation, for and in consideration of  
The sum of One Thousand Five Hundred  
Fifty Seven 50/100 (\$1,557.50) in

Lawful money of the United States paid to All American Roofing, Inc. at the date hereof,  
has remised released and discharged 9821 D Bianco Terrace – Des Plaines, Cook  
County and Owner of Record of the following described land in the County of Cook,  
State of Illinois, to-wit:

**PIN# 09-10-301-072-1226**

**COMMONLY KNOW AS: 9821 D Bianco Terrace – Des Plaines, IL.**

By the presents, docs for all heirs, executors and administrators, remise, release and  
discharge the said heirs, executors, and administrators, if and for a part of actions, cause,  
and causes of action, suites, debts, sums of money, accounts, claims and demands, in law  
or in equity and without limiting the generality of the foregoing, release the  
**SUBCONTRACTORS NOTICE AND CLAIM FOR MECHANIC'S LIEN.**  
previously recorded with Cook County Recorded of Deeds as Document #0021413417

Dated: August 1, 2005

All American Roofing, Inc.

BY" \_\_\_\_\_

# UNOFFICIAL COPY

21413417

9821 Bianco Terrace – Des Plaines, IL.

Unit # 226 As delineated on survey of a part of the East 8 acres of the W  $\frac{1}{2}$  of the SE  $\frac{1}{4}$  of the S.W  $\frac{1}{4}$  of Section 10 Township 41 North, Range 12, East of the 3<sup>rd</sup> Principle Meridian in Cook County, IL. Which Survey is attached as exhibit A to declaration of Condo Ownership made by the 1<sup>st</sup> National Bank of Arlington Heights, as trustee under trust #227. As amended from time to time together with a percentage of the common elements affluenant to said unit as set forth in said declaration as amended from time to time which percentage shall automatically change in accordance with amended declarations pursuant to said declaration and together with additional common elements such as amended declarations are filed and recorded in the percentage set forth in such amended declarations which percentages shall automatically be deemed to be conveyed effective on the recordings of each such amended declaration as though conveyed hereby

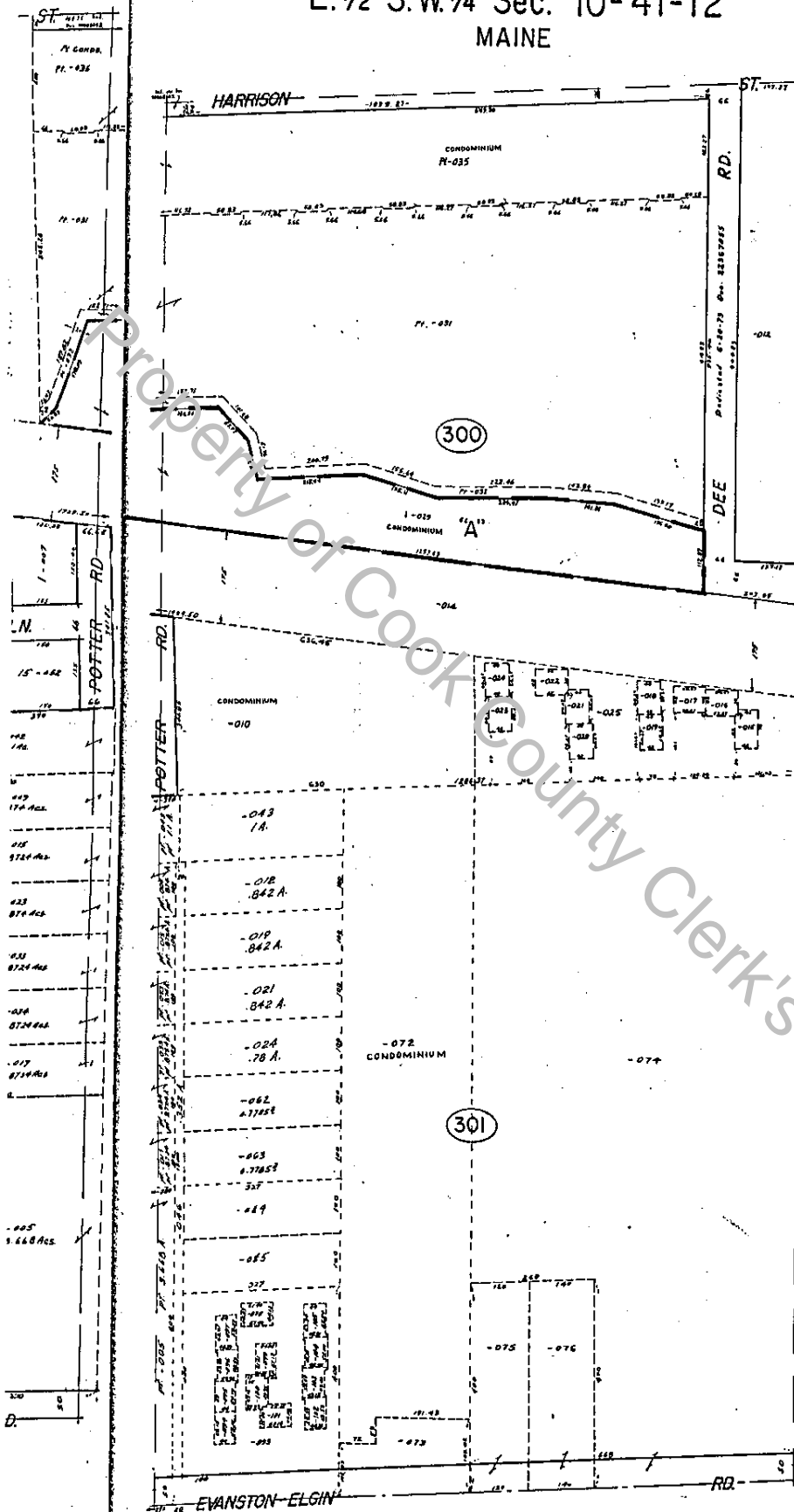
Property of Cook County Clerk's Office

# UNOFFICIAL COPY

21417417

E. 1/2 S.W. 1/4 Sec. 10-41-12  
MAINE

41-12-10F  
9-10



CONDOMINIUM 09-10-381-072  
LA CARA BIANCO CONDOMINIUM  
Res. May 31, 1978 Dec. 21, 1978  
June 30, 1978 21900000  
Aug. 15, 1978 2216199  
Sept. 16, 1978 2225582  
Nov. 26, 1978 2225887

UNIT	UNIT	UNIT
U-1 = 1001	U-79 = 1179	U-103 = 1183
U-2 = 1002	U-78 = 1178	U-102 = 1182
U-3 = 1003	U-77 = 1177	U-101 = 1181
U-4 = 1004	U-76 = 1176	U-100 = 1180
U-5 = 1005	U-75 = 1175	U-99 = 1179
U-6 = 1006	U-74 = 1174	U-98 = 1178
U-7 = 1007	U-73 = 1173	U-97 = 1177
U-8 = 1008	U-72 = 1172	U-96 = 1176
U-9 = 1009	U-71 = 1171	U-95 = 1175
U-10 = 1010	U-70 = 1170	U-94 = 1174
U-11 = 1011	U-69 = 1169	U-93 = 1173
U-12 = 1012	U-68 = 1168	U-92 = 1172
U-13 = 1013	U-67 = 1167	U-91 = 1171
U-14 = 1014	U-66 = 1166	U-90 = 1170
U-15 = 1015	U-65 = 1165	U-89 = 1169
U-16 = 1016	U-64 = 1164	U-88 = 1168
U-17 = 1017	U-63 = 1163	U-87 = 1167
U-18 = 1018	U-62 = 1162	U-86 = 1166
U-19 = 1019	U-61 = 1161	U-85 = 1165
U-20 = 1020	U-60 = 1160	U-84 = 1164
U-21 = 1021	U-59 = 1159	U-83 = 1163
U-22 = 1022	U-58 = 1158	U-82 = 1162
U-23 = 1023	U-57 = 1157	U-81 = 1161
U-24 = 1024	U-56 = 1156	U-80 = 1160
U-25 = 1025	U-55 = 1155	U-79 = 1159
U-26 = 1026	U-54 = 1154	U-78 = 1158
U-27 = 1027	U-53 = 1153	U-77 = 1157
U-28 = 1028	U-52 = 1152	U-76 = 1156
U-29 = 1029	U-51 = 1151	U-75 = 1155
U-30 = 1030	U-50 = 1150	U-74 = 1154
U-31 = 1031	U-49 = 1149	U-73 = 1153
U-32 = 1032	U-48 = 1148	U-72 = 1152
U-33 = 1033	U-47 = 1147	U-71 = 1151
U-34 = 1034	U-46 = 1146	U-70 = 1150
U-35 = 1035	U-45 = 1145	U-69 = 1149
U-36 = 1036	U-44 = 1144	U-68 = 1148
U-37 = 1037	U-43 = 1143	U-67 = 1147
U-38 = 1038	U-42 = 1142	U-66 = 1146
U-39 = 1039	U-41 = 1141	U-65 = 1145
U-40 = 1040	U-40 = 1140	U-64 = 1144
U-41 = 1041	U-39 = 1139	U-63 = 1143
U-42 = 1042	U-38 = 1138	U-62 = 1142
U-43 = 1043	U-37 = 1137	U-61 = 1141
U-44 = 1044	U-36 = 1136	U-60 = 1140
U-45 = 1045	U-35 = 1135	U-59 = 1139
U-46 = 1046	U-34 = 1134	U-58 = 1138
U-47 = 1047	U-33 = 1133	U-57 = 1137
U-48 = 1048	U-32 = 1132	U-56 = 1136
U-49 = 1049	U-31 = 1131	U-55 = 1135
U-50 = 1050	U-30 = 1130	U-54 = 1134
U-51 = 1051	U-29 = 1129	U-53 = 1133
U-52 = 1052	U-28 = 1128	U-52 = 1132
U-53 = 1053	U-27 = 1127	U-51 = 1131
U-54 = 1054	U-26 = 1126	U-50 = 1130
U-55 = 1055	U-25 = 1125	U-49 = 1129
U-56 = 1056	U-24 = 1124	U-48 = 1128
U-57 = 1057	U-23 = 1123	U-47 = 1127
U-58 = 1058	U-22 = 1122	U-46 = 1126
U-59 = 1059	U-21 = 1121	U-45 = 1125
U-60 = 1060	U-20 = 1120	U-44 = 1124
U-61 = 1061	U-19 = 1119	U-43 = 1123
U-62 = 1062	U-18 = 1118	U-42 = 1122
U-63 = 1063	U-17 = 1117	U-41 = 1121
U-64 = 1064	U-16 = 1116	U-40 = 1120
U-65 = 1065	U-15 = 1115	U-39 = 1119
U-66 = 1066	U-14 = 1114	U-38 = 1118
U-67 = 1067	U-13 = 1113	U-37 = 1117
U-68 = 1068	U-12 = 1112	U-36 = 1116
U-69 = 1069	U-11 = 1111	U-35 = 1115
U-70 = 1070	U-10 = 1110	U-34 = 1114
U-71 = 1071	U-9 = 1109	U-33 = 1113
U-72 = 1072	U-8 = 1108	U-32 = 1112
U-73 = 1073	U-7 = 1107	U-31 = 1111
U-74 = 1074	U-6 = 1106	U-30 = 1110
U-75 = 1075	U-5 = 1105	U-29 = 1109
U-76 = 1076	U-4 = 1104	U-28 = 1108
U-77 = 1077	U-3 = 1103	U-27 = 1107
U-78 = 1078	U-2 = 1102	U-26 = 1106
U-79 = 1079	U-1 = 1101	U-25 = 1105
U-80 = 1080	U-0 = 1100	U-24 = 1104

CONDOMINIUM 09-10-300-008  
HAMILTON COURT CONDOMINIUM  
Res. Oct. 10, 1978 Dec. 23, 1978

UNIT	UNIT	UNIT
310-A-1001	310-B-1001	310-C-1001
310-A-1002	310-B-1002	310-C-1002
310-A-1003	310-B-1003	310-C-1003
310-A-1004	310-B-1004	310-C-1004
310-A-1005	310-B-1005	310-C-1005
310-A-1006	310-B-1006	310-C-1006
310-A-1007	310-B-1007	310-C-1007
310-A-1008	310-B-1008	310-C-1008
310-A-1009	310-B-1009	310-C-1009
310-A-1010	310-B-1010	310-C-1010
310-A-1011	310-B-1011	310-C-1011
310-A-1012	310-B-1012	310-C-1012
310-A-1013	310-B-1013	310-C-1013
310-A-1014	310-B-1014	310-C-1014
310-A-1015	310-B-1015	310-C-1015
310-A-1016	310-B-1016	310-C-1016
310-A-1017	310-B-1017	310-C-1017
310-A-1018	310-B-1018	310-C-1018
310-A-1019	310-B-1019	310-C-1019
310-A-1020	310-B-1020	310-C-1020
310-A-1021	310-B-1021	310-C-1021
310-A-1022	310-B-1022	310-C-1022
310-A-1023	310-B-1023	310-C-1023
310-A-1024	310-B-1024	310-C-1024
310-A-1025	310-B-1025	310-C-1025
310-A-1026	310-B-1026	310-C-1026
310-A-1027	310-B-1027	310-C-1027
310-A-1028	310-B-1028	310-C-1028
310-A-1029	310-B-1029	310-C-1029
310-A-1030	310-B-1030	310-C-1030
310-A-1031	310-B-1031	310-C-1031
310-A-1032	310-B-1032	310-C-1032
310-A-1033	310-B-1033	310-C-1033
310-A-1034	310-B-1034	310-C-1034
310-A-1035	310-B-1035	310-C-1035
310-A-1036	310-B-1036	310-C-1036
310-A-1037	310-B-1037	310-C-1037
310-A-1038	310-B-1038	310-C-1038
310-A-1039	310-B-1039	310-C-1039
310-A-1040	310-B-1040	310-C-1040

REVISED JAN. 1, 2001