

UNOFFICIAL COPY



ALL AMERICAN
EXTERIOR SOLUTIONS

STATE OF ILLINOIS)

COUNTY OF COOK)



0521455123

Doc#: 0521455123
Eugene "Gene" Moore Fee: \$18.00
Cook County Recorder of Deeds
Date: 08/02/2005 04:04 PM Pg: 1 of 3

**RELEASE OF
SUBCONTRACTOR'S NOTICE
AND CLAIM FOR MECHANIC'S
LIEN**

KNOW ALL MEN BY THESE PRESENTS, All American Roofing, Inc. Of Lake Zurich, Illinois, an Illinois Corporation, for and in consideration of The sum of One Thousand Four Hundred Ninety One 67/100 (\$1,491.67) in Lawful money of the United States paid to All American Roofing, Inc. at the date hereof, has remised released and discharged 9824 F Bianco Terrace – Des Plaines, Cook County and Owner of Record of the following described land in the County of Cook, State of Illinois, to-wit:

PIN# 09-10-301-072-1216

COMMONLY KNOW AS: 9824 F Bianco Terrace – Des Plaines, IL.

By the presents, docs for all heirs, executors and administrators, remise, release and discharge the said heirs, executors, and administrators, if and for a part of actions, cause, and causes of action, suites, debts, sums of money, accounts, claims and demands, in law or in equity and without limiting the generality of the foregoing, release the **SUBCONTRACTORS NOTICE AND CLAIM FOR MECHANIC'S LIEN**, previously recorded with Cook County Recorded of Deeds as **Document #0021409778**

Dated: August 1, 2005

All American Roofing, Inc.

BY" _____

UNOFFICIAL COPY

21-103778

9824 Bianco Terrace – Des Plaines, IL.

Unit # 216 As delineated on survey of a part of the East 8 acres of the W $\frac{1}{2}$ of the SE $\frac{1}{4}$ of the S.W $\frac{1}{4}$ of Section 10 Township 41 North, Range 12, East of the 3rd Principle Meridian in Cook County, IL. Which Survey is attached as exhibit A to declaration of Condo Ownership made by the 1st National Bank of Arlington Heights, as trustee under trust #227. As amended from time to time together with a percentage of the common elements affuflenant to said unit as set forth in said declaration as amended from time to time which percentage shall automatically change in accordance with amended declarations pursuant to said declaration and together with additional common elements such as amended declarations are filed and recorded in the percentage set forth in such amended declarations which percentages shall automatically be deemed to be conveyed effective on the recordings of each such amended declaration as though conveyed hereby

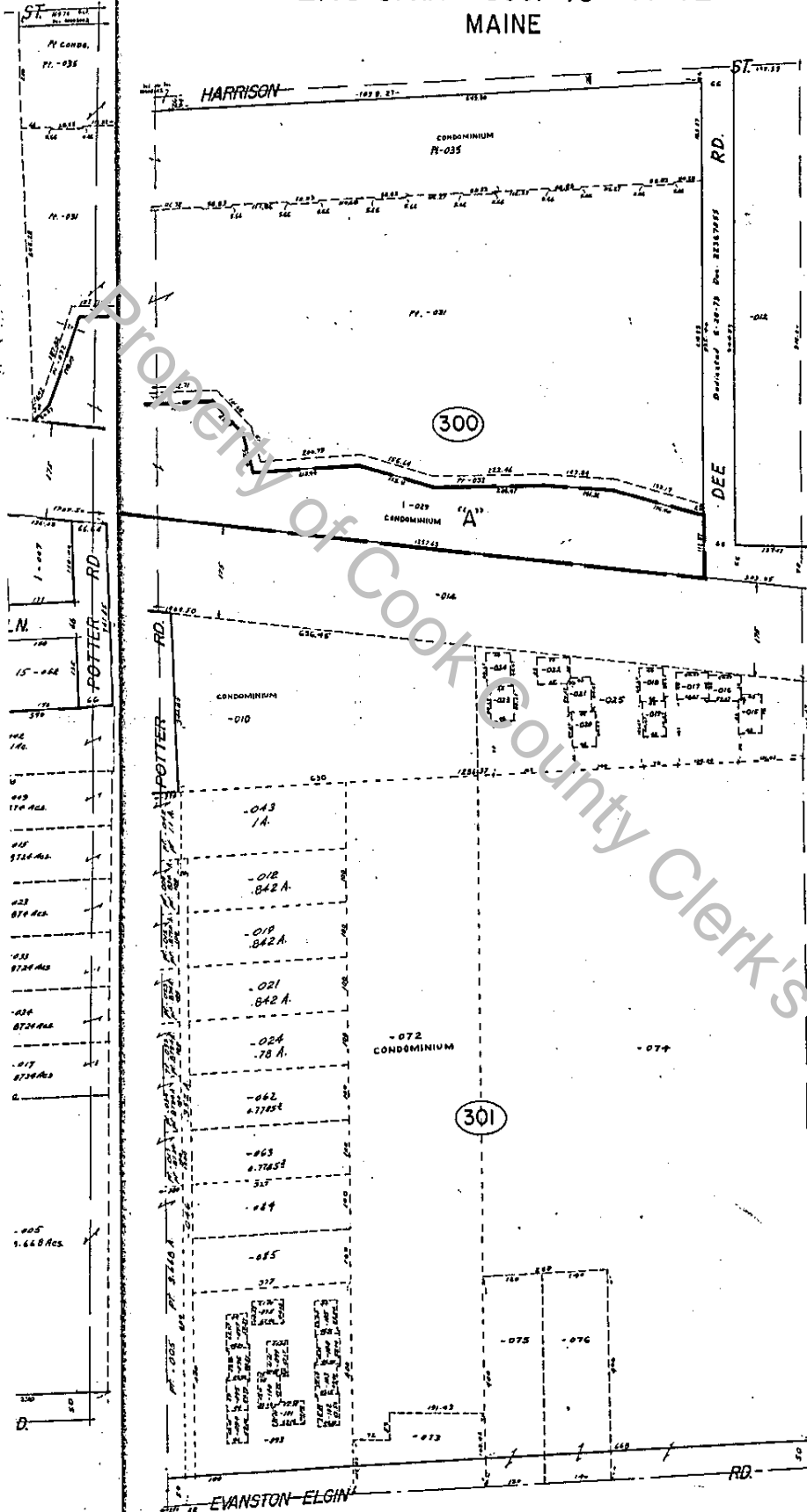
Property of Cook County Clerk's Office

UNOFFICIAL COPY

21409778

E. 1/2 S.W. 1/4 Sec. 10-41-12 MAINE

41-12-10F
9-10



CONDOMINIUM 09-10-381-072
 L.A. CASE BRANCE CONDOMINIUM
 Rec. May 31, 1978 Doc. 21920240
 June 30, 1978 21660630
 Aug. 15, 1978 22061599
 Sep. 16, 1978 22065082
 Nov. 20, 1978 22155807

UNIT	UNIT	UNIT
U-1 = 1001	U-17 = 1077	U-33 = 1153
U-2 = 1002	U-18 = 1078	U-34 = 1154
U-3 = 1003	U-19 = 1079	U-35 = 1155
U-4 = 1004	U-20 = 1080	U-36 = 1156
U-5 = 1005	U-21 = 1081	U-37 = 1157
U-6 = 1006	U-22 = 1082	U-38 = 1158
U-7 = 1007	U-23 = 1083	U-39 = 1159
U-8 = 1008	U-24 = 1084	U-40 = 1160
U-9 = 1009	U-25 = 1085	U-41 = 1161
U-10 = 1010	U-26 = 1086	U-42 = 1162
U-11 = 1011	U-27 = 1087	U-43 = 1163
U-12 = 1012	U-28 = 1088	U-44 = 1164
U-13 = 1013	U-29 = 1089	U-45 = 1165
U-14 = 1014	U-30 = 1090	U-46 = 1166
U-15 = 1015	U-31 = 1091	U-47 = 1167
U-16 = 1016	U-32 = 1092	U-48 = 1168
U-17 = 1017	U-33 = 1093	U-49 = 1169
U-18 = 1018	U-34 = 1094	U-50 = 1170
U-19 = 1019	U-35 = 1095	U-51 = 1171
U-20 = 1020	U-36 = 1096	U-52 = 1172
U-21 = 1021	U-37 = 1097	U-53 = 1173
U-22 = 1022	U-38 = 1098	U-54 = 1174
U-23 = 1023	U-39 = 1099	U-55 = 1175
U-24 = 1024	U-40 = 1100	U-56 = 1176
U-25 = 1025	U-41 = 1101	U-57 = 1177
U-26 = 1026	U-42 = 1102	U-58 = 1178
U-27 = 1027	U-43 = 1103	U-59 = 1179
U-28 = 1028	U-44 = 1104	U-60 = 1180
U-29 = 1029	U-45 = 1105	U-61 = 1181
U-30 = 1030	U-46 = 1106	U-62 = 1182
U-31 = 1031	U-47 = 1107	U-63 = 1183
U-32 = 1032	U-48 = 1108	U-64 = 1184
U-33 = 1033	U-49 = 1109	U-65 = 1185
U-34 = 1034	U-50 = 1110	U-66 = 1186
U-35 = 1035	U-51 = 1111	U-67 = 1187
U-36 = 1036	U-52 = 1112	U-68 = 1188
U-37 = 1037	U-53 = 1113	U-69 = 1189
U-38 = 1038	U-54 = 1114	U-70 = 1190
U-39 = 1039	U-55 = 1115	U-71 = 1191
U-40 = 1040	U-56 = 1116	U-72 = 1192
U-41 = 1041	U-57 = 1117	U-73 = 1193
U-42 = 1042	U-58 = 1118	U-74 = 1194
U-43 = 1043	U-59 = 1119	U-75 = 1195
U-44 = 1044	U-60 = 1120	U-76 = 1196
U-45 = 1045	U-61 = 1121	U-77 = 1197
U-46 = 1046	U-62 = 1122	U-78 = 1198
U-47 = 1047	U-63 = 1123	U-79 = 1199
U-48 = 1048	U-64 = 1124	U-80 = 1200
U-49 = 1049	U-65 = 1125	U-81 = 1201
U-50 = 1050	U-66 = 1126	U-82 = 1202
U-51 = 1051	U-67 = 1127	U-83 = 1203
U-52 = 1052	U-68 = 1128	U-84 = 1204
U-53 = 1053	U-69 = 1129	U-85 = 1205
U-54 = 1054	U-70 = 1130	U-86 = 1206
U-55 = 1055	U-71 = 1131	U-87 = 1207
U-56 = 1056	U-72 = 1132	U-88 = 1208
U-57 = 1057	U-73 = 1133	U-89 = 1209
U-58 = 1058	U-74 = 1134	U-90 = 1210
U-59 = 1059	U-75 = 1135	U-91 = 1211
U-60 = 1060	U-76 = 1136	U-92 = 1212
U-61 = 1061	U-77 = 1137	U-93 = 1213
U-62 = 1062	U-78 = 1138	U-94 = 1214
U-63 = 1063	U-79 = 1139	U-95 = 1215
U-64 = 1064	U-80 = 1140	U-96 = 1216
U-65 = 1065	U-81 = 1141	U-97 = 1217
U-66 = 1066	U-82 = 1142	U-98 = 1218
U-67 = 1067	U-83 = 1143	U-99 = 1219
U-68 = 1068	U-84 = 1144	U-100 = 1220
U-69 = 1069	U-85 = 1145	U-101 = 1221
U-70 = 1070	U-86 = 1146	U-102 = 1222
U-71 = 1071	U-87 = 1147	U-103 = 1223
U-72 = 1072	U-88 = 1148	U-104 = 1224
U-73 = 1073	U-89 = 1149	U-105 = 1225
U-74 = 1074	U-90 = 1150	U-106 = 1226
U-75 = 1075	U-91 = 1151	U-107 = 1227
U-76 = 1076	U-92 = 1152	U-108 = 1228

CONDOMINIUM 09-10-300-010
 HAMILTON CRYST CONDOMINIUMS
 Rec. Oct. 10, 1979 Doc. 21813472

UNIT	UNIT	UNIT
9370-A-1001	9370-A-1017	9370-C-1022
9370-B-1002	9370-B-1018	9370-C-1023
9370-C-1003	9370-C-1019	9370-D-1024
9370-D-1004	9370-D-1020	9370-E-1025
9370-E-1005	9370-E-1021	9370-F-1026
9370-F-1006	9370-F-1022	9370-G-1027
9370-G-1007	9370-G-1023	9370-H-1028
9370-H-1008	9370-H-1024	9370-I-1029
9370-I-1009	9370-I-1025	9370-J-1030
9370-J-1010	9370-J-1026	9370-K-1031
9370-K-1011	9370-K-1027	9370-L-1032
9370-L-1012	9370-L-1028	9370-M-1033
9370-M-1013	9370-M-1029	9370-N-1034
9370-N-1014	9370-N-1030	9370-O-1035
9370-O-1015	9370-O-1031	9370-P-1036
9370-P-1016	9370-P-1032	9370-Q-1037
9370-Q-1017	9370-Q-1033	9370-R-1038
9370-R-1018	9370-R-1034	9370-S-1039
9370-S-1019	9370-S-1035	9370-T-1040
9370-T-1020	9370-T-1036	9370-U-1041
9370-U-1021	9370-U-1037	9370-V-1042
9370-V-1022	9370-V-1038	9370-W-1043
9370-W-1023	9370-W-1039	9370-X-1044
9370-X-1024	9370-X-1040	9370-Y-1045
9370-Y-1025	9370-Y-1041	9370-Z-1046
9370-Z-1026	9370-Z-1042	

Additional Units Per J
 Rec. Mar. 21, 1980 Doc. 25407501

UNIT	UNIT	UNIT
9380-A-1049	9380-C-1063	9380-E-1077
9380-B-1050	9380-D-1064	9380-F-1078
9380-C-1051	9380-E-1065	9380-G-1079
9380-D-1052	9380-F-1066	9380-H-1080
9380-E-1053	9380-G-1067	9380-I-1081
9380-F-1054	9380-H-1068	9380-J-1082
9380-G-1055	9380-I-1069	9380-K-1083
9380-H-1056	9380-J-1070	9380-L-1084
9380-I-1057	9380-K-1071	9380-M-1085
9380-J-1058	9380-L-1072	9380-N-1086
9380-K-1059	9380-M-1073	9380-O-1087
9380-L-1060	9380-N-1074	9380-P-1088
9380-M-1061	9380-O-1075	9380-Q-1089
9380-N-1062	9380-P-1076	9380-R-1090