

UNOFFICIAL COPY



ALL AMERICAN
EXTERIOR SOLUTIONS

STATE OF ILLINOIS)

COUNTY OF COOK)



0521455131

**RELEASE OF
SUBCONTRACTOR'S NOTICE
AND CLAIM FOR MECHANIC'S
LIEN**

Doc#: 0521455131
Eugene "Gene" Moore Fee: \$18.00
Cook County Recorder of Deeds
Date: 08/02/2005 04:04 PM Pg: 1 of 3

KNOW ALL MEN BY THESE PRESENTS, All American Roofing, Inc. Of Lake Zurich, Illinois, an Illinois Corporation, for and in consideration of The sum of One Thousand Four Hundred Fourty Eight 34/100 (\$1,448.34) in Lawful money of the United States paid to All American Roofing, Inc. at the date hereof, has remised released and discharged 9724 B Bianco Terrace – Des Plaines, Cook County and Owner of Record of the following described land in the County of Cook, State of Illinois, to-wit:

PIN# 09-10-301-072-1128

COMMONLY KNOW AS: 9724 B Bianco Terrace – Des Plaines, IL.

By the presents, docs for all heirs, executors and administrators, remise, release and discharge the said heirs, executors, and administrators, if and for a part of actions, cause, and causes of action, suites, debts, sums of money, accounts, claims and demands, in law or in equity and without limiting the generality of the foregoing, release the **SUBCONTRACTORS NOTICE AND CLAIM FOR MECHANIC'S LIEN**, previously recorded with Cook County Recorded of Deeds as **Document #0021409780**

Dated: August 1, 2005

All American Roofing, Inc.

BY" _____

3

UNOFFICIAL COPY

9724 Bianco Terrace – Des Plaines, IL.

21409780

Unit # 128 As delineated on survey of a part of the East 8 acres of the W $\frac{1}{2}$ of the SE $\frac{1}{4}$ of the S.W $\frac{1}{4}$ of Section 10 Township 41 North, Range 12, East of the 3rd Principle Meridian in Cook County, IL. Which Survey is attached as exhibit A to declaration of Condo Ownership made by the 1st National Bank of Arlington Heights, as trustee under trust #227. As amended from time to time together with a percentage of the common elements affuflenant to said unit as set forth in said declaration as amended from time to time which percentage shall automatically change in accordance with amended declarations pursuant to said declaration and together with additional common elements such as amended declarations are filed and recorded in the percentage set forth in such amended declarations which percentages shall automatically be deemed to be conveyed effective on the recordings of each such amended declaration as though conveyed hereby

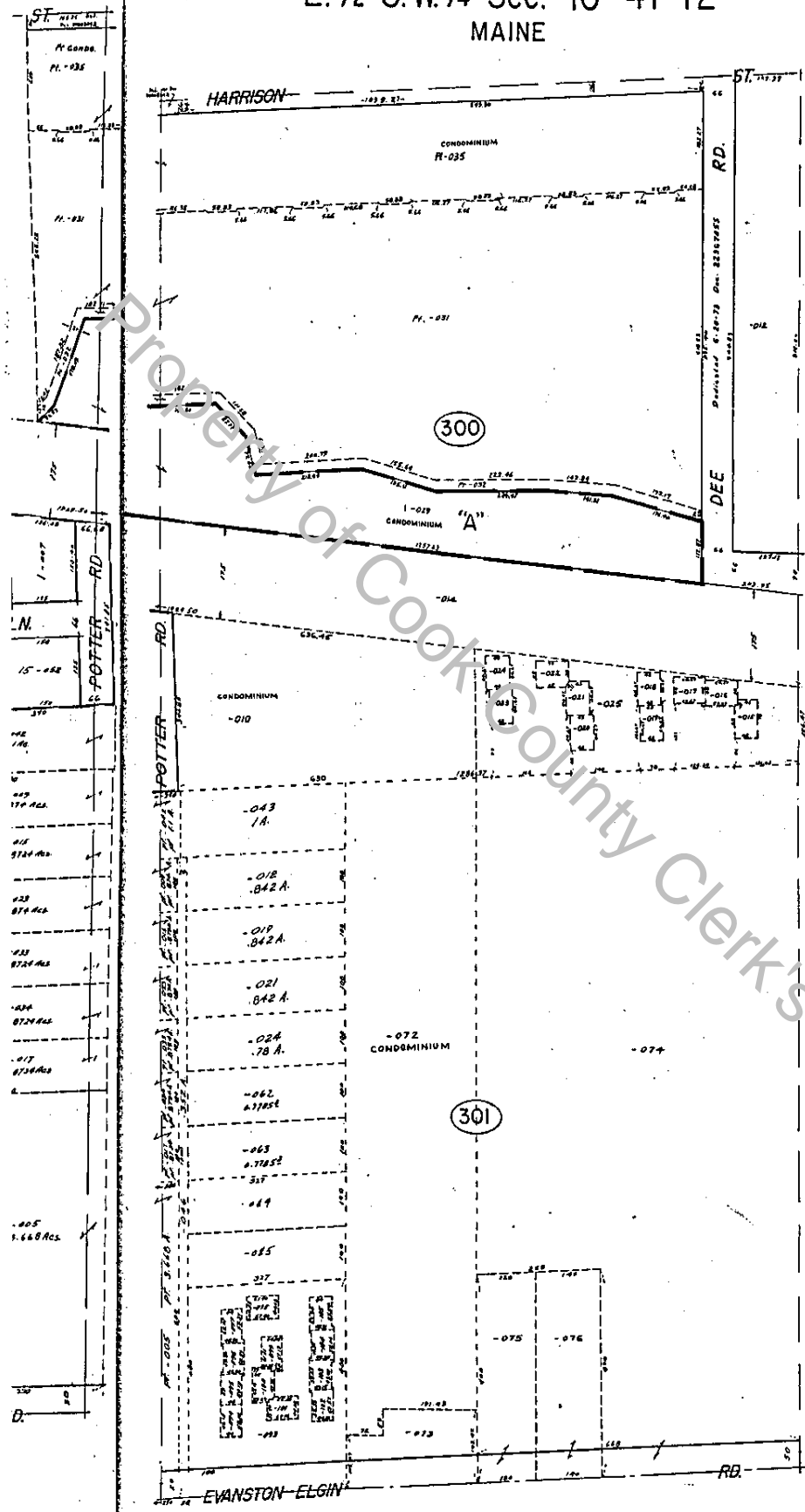
Property of Cook County Clerk's Office

UNOFFICIAL COPY

21409780

E. 1/2 S.W. 1/4 Sec. 10-41-12
MAINE

41-12-10F
9-10



CONDOMINIUM 09-10-301-072
LA. CRE. DISTRICT CONDOMINIUM
Res. May 31, 1978 Dec. 21, 1983

UNIT	UNIT	UNIT
U-1-1001	U-37-1107	U-163-1115B
U-2-1002	U-38-1108	U-164-1116A
U-3-1003	U-39-1109	U-165-1117C
U-4-1004	U-40-1110	U-166-1118E
U-5-1005	U-41-1111	U-167-1119G
U-6-1006	U-42-1112	U-168-1120I
U-7-1007	U-43-1113	U-169-1121K
U-8-1008	U-44-1114	U-170-1122M
U-9-1009	U-45-1115	U-171-1123O
U-10-1010	U-46-1116	U-172-1124Q
U-11-1011	U-47-1117	U-173-1125S
U-12-1012	U-48-1118	U-174-1126U
U-13-1013	U-49-1119	U-175-1127W
U-14-1014	U-50-1120	U-176-1128Y
U-15-1015	U-51-1121	U-177-1129Z
U-16-1016	U-52-1122	U-178-1130AA
U-17-1017	U-53-1123	U-179-1131BB
U-18-1018	U-54-1124	U-180-1132CC
U-19-1019	U-55-1125	U-181-1133DD
U-20-1020	U-56-1126	U-182-1134EE
U-21-1021	U-57-1127	U-183-1135FF
U-22-1022	U-58-1128	U-184-1136GG
U-23-1023	U-59-1129	U-185-1137HH
U-24-1024	U-60-1130	U-186-1138II
U-25-1025	U-61-1131	U-187-1139JJ
U-26-1026	U-62-1132	U-188-1140KK
U-27-1027	U-63-1133	U-189-1141LL
U-28-1028	U-64-1134	U-190-1142MM
U-29-1029	U-65-1135	U-191-1143NN
U-30-1030	U-66-1136	U-192-1144OO
U-31-1031	U-67-1137	U-193-1145PP
U-32-1032	U-68-1138	U-194-1146QQ
U-33-1033	U-69-1139	U-195-1147RR
U-34-1034	U-70-1140	U-196-1148SS
U-35-1035	U-71-1141	U-197-1149TT
U-36-1036	U-72-1142	U-198-1150UU
U-37-1037	U-73-1143	U-199-1151VV
U-38-1038	U-74-1144	U-200-1152WW
U-39-1039	U-75-1145	U-201-1153XX
U-40-1040	U-76-1146	U-202-1154YY
U-41-1041	U-77-1147	U-203-1155ZZ
U-42-1042	U-78-1148	U-204-1156AA
U-43-1043	U-79-1149	U-205-1157BB
U-44-1044	U-80-1150	U-206-1158CC
U-45-1045	U-81-1151	U-207-1159DD
U-46-1046	U-82-1152	U-208-1160EE
U-47-1047	U-83-1153	U-209-1161FF
U-48-1048	U-84-1154	U-210-1162GG
U-49-1049	U-85-1155	U-211-1163HH
U-50-1050	U-86-1156	U-212-1164II
U-51-1051	U-87-1157	U-213-1165JJ
U-52-1052	U-88-1158	U-214-1166KK
U-53-1053	U-89-1159	U-215-1167LL
U-54-1054	U-90-1160	U-216-1168MM
U-55-1055	U-91-1161	U-217-1169NN
U-56-1056	U-92-1162	U-218-1170OO
U-57-1057	U-93-1163	U-219-1171PP
U-58-1058	U-94-1164	U-220-1172QQ
U-59-1059	U-95-1165	U-221-1173RR
U-60-1060	U-96-1166	U-222-1174SS
U-61-1061	U-97-1167	U-223-1175TT
U-62-1062	U-98-1168	U-224-1176UU
U-63-1063	U-99-1169	U-225-1177VV
U-64-1064	U-100-1170	U-226-1178WW
U-65-1065	U-101-1171	U-227-1179XX
U-66-1066	U-102-1172	U-228-1180YY
U-67-1067	U-103-1173	U-229-1181ZZ
U-68-1068	U-104-1174	U-230-1182AA
U-69-1069	U-105-1175	U-231-1183BB
U-70-1070	U-106-1176	U-232-1184CC
U-71-1071	U-107-1177	U-233-1185DD
U-72-1072	U-108-1178	U-234-1186EE
U-73-1073	U-109-1179	U-235-1187FF
U-74-1074	U-110-1180	U-236-1188GG
U-75-1075	U-111-1181	U-237-1189HH
U-76-1076	U-112-1182	U-238-1190II

CONDOMINIUM 09-10-304-016
HAMILTON COURT CONDOMINIUM
Res. Oct 10, 1978 Dec. 23, 1983

UNIT	UNIT	UNIT
9310-A-1001	9328-A-1017	9340-C-1033
9311-A-1002	9329-A-1018	9341-C-1034
9312-A-1003	9330-A-1019	9342-C-1035
9313-A-1004	9331-A-1020	9343-C-1036
9314-A-1005	9332-A-1021	9344-C-1037
9315-A-1006	9333-A-1022	9345-C-1038
9316-A-1007	9334-A-1023	9346-C-1039
9317-A-1008	9335-A-1024	9347-C-1040
9318-A-1009	9336-A-1025	9348-C-1041
9319-A-1010	9337-A-1026	9349-C-1042
9320-A-1011	9338-A-1027	9350-C-1043
9321-A-1012	9339-A-1028	9351-C-1044
9322-A-1013	9340-A-1029	9352-C-1045
9323-A-1014	9341-A-1030	9353-C-1046
9324-A-1015	9342-A-1031	9354-C-1047
9325-A-1016	9343-A-1032	9355-C-1048
9326-A-1017	9344-A-1033	9356-C-1049
9327-A-1018	9345-A-1034	9357-C-1050

Additional Units Per J
Res. Mar. 21, 1980 Dec. 24, 1981

UNIT	UNIT	UNIT
9360-A-1049	9370-C-1063	9380-E-1077
9361-A-1050	9371-C-1064	9381-E-1078
9362-A-1051	9372-C-1065	9382-E-1079
9363-A-1052	9373-C-1066	9383-E-1080
9364-A-1053	9374-C-1067	9384-E-1081
9365-A-1054	9375-C-1068	9385-E-1082
9366-A-1055	9376-C-1069	9386-E-1083
9367-A-1056	9377-C-1070	9387-E-1084
9368-A-1057	9378-C-1071	9388-E-1085
9369-A-1058	9379-C-1072	9389-E-1086
9370-A-1059	9380-A-1073	9390-E-1087
9371-A-1060	9381-A-1074	9391-E-1088
9372-A-1061	9382-A-1075	9392-E-1089
9373-A-1062	9383-A-1076	9393-E-1090

REVISED JAN. 1, 2001