

UNOFFICIAL COPY



ALL AMERICAN  
EXTERIOR SOLUTIONS

STATE OF ILLINOIS )  
                                  )  
COUNTY OF COOK )



0521455134

Doc#: 0521455134  
Eugene "Gene" Moore Fee: \$18.00  
Cook County Recorder of Deeds  
Date: 08/02/2005 04:04 PM Pg: 1 of 3

**RELEASE OF  
SUBCONTRACTOR'S NOTICE  
AND CLAIM FOR MECHANIC'S  
LIEN**

KNOW ALL MEN BY THESE PRESENTS, All American Roofing, Inc. Of Lake Zurich, Illinois, an Illinois Corporation, for and in consideration of The sum of One Thousand Four Hundred And Fourty Eight and 34/100 (\$1,448.34) in Lawful money of the United States paid to All American Roofing, Inc. at the date hereof, has remised released and discharged 9724 E Bianco Terrace – Des Plaines, Cook County and Owner of Record of the following described land in the County of Cook, State of Illinois, to-wit:

**PIN# 09-10-301-072-1131**  
**COMMONLY KNOW AS: 9724 E Bianco Terrace – Des Plaines, IL.**

By the presents, docs for all heirs, executors and administrators, remise, release and discharge the said heirs, executors, and administrators, if and for a part of actions, cause, and causes of action, suites, debts, sums of money, accounts, claims and demands, in law or in equity and without limiting the generality of the foregoing, release the **SUBCONTRACTORS NOTICE AND CLAIM FOR MECHANIC'S LIEN,** previously recorded with Cook County Recorded of Deeds as Document #0021409783

Dated: August 1, 2005

All American Roofing, Inc.

BY" \_\_\_\_\_

# UNOFFICIAL COPY

21409783

9724 Bianco Terrace – Des Plaines, IL.

Unit # 131 As delineated on survey of a part of the East 8 acres of the W  $\frac{1}{2}$  of the SE  $\frac{1}{4}$  of the S.W  $\frac{1}{4}$  of Section 10 Township 41 North, Range 12, East of the 3<sup>rd</sup> Principle Meridian in Cook County, IL. Which Survey is attached as exhibit A to declaration of Condo Ownership made by the 1<sup>st</sup> National Bank of Arlington Heights, as trustee under trust #227. As amended from time to time together with a percentage of the common elements affluenant to said unit as set forth in said declaration as amended from time to time which percentage shall automatically change in accordance with amended declarations pursuant to said declaration and together with additional common elements such as amended declarations are filed and recorded in the percentage set forth in such amended declarations which percentages shall automatically be deemed to be conveyed effective on the recordings of each such amended declaration as though conveyed hereby

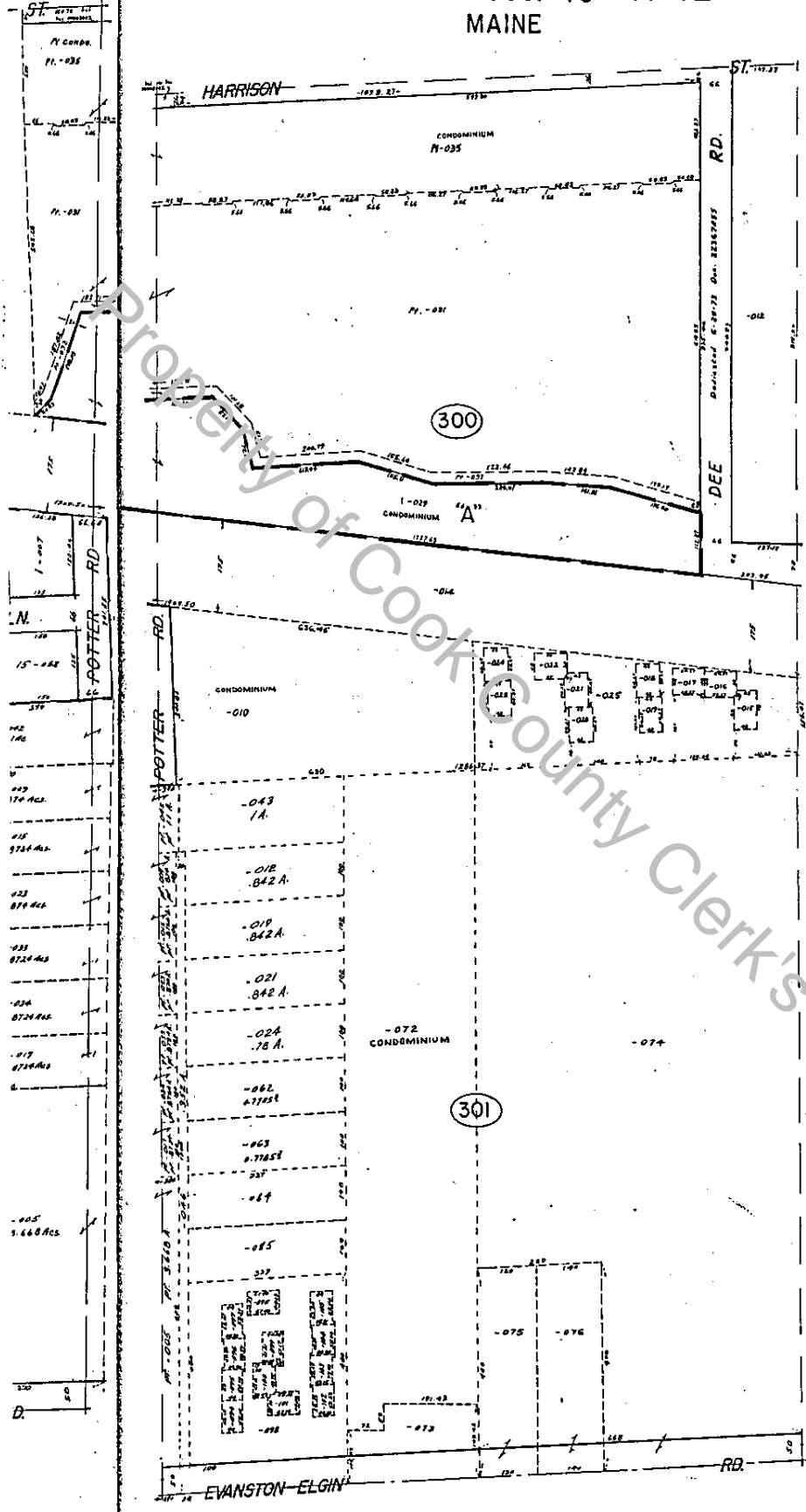
County of Cook County Clerk's Office

# UNOFFICIAL COPY

21409783

## E. 1/2 S.W. 1/4 Sec. 10-41-12 MAINE

41-12-10F  
9-10



CONDOMINIUM 09-10-301-072  
HARRISON COUNTY CONDOMINIUMS  
Reg. May 31, 1978 Dec. 31, 1979

UNIT	UNIT	UNIT
U-1 = 1981	U-77 = 1877	U-103 = 1418
U-2 = 1868	U-78 = 1878	U-104 = 1419
U-3 = 1869	U-79 = 1879	U-105 = 1420
U-4 = 1866	U-80 = 1880	U-106 = 1421
U-5 = 1867	U-81 = 1881	U-107 = 1422
U-6 = 1868	U-82 = 1882	U-108 = 1423
U-7 = 1869	U-83 = 1883	U-109 = 1424
U-8 = 1870	U-84 = 1884	U-110 = 1425
U-9 = 1871	U-85 = 1885	U-111 = 1426
U-10 = 1872	U-86 = 1886	U-112 = 1427
U-11 = 1873	U-87 = 1887	U-113 = 1428
U-12 = 1874	U-88 = 1888	U-114 = 1429
U-13 = 1875	U-89 = 1889	U-115 = 1430
U-14 = 1876	U-90 = 1890	U-116 = 1431
U-15 = 1877	U-91 = 1891	U-117 = 1432
U-16 = 1878	U-92 = 1892	U-118 = 1433
U-17 = 1879	U-93 = 1893	U-119 = 1434
U-18 = 1880	U-94 = 1894	U-120 = 1435
U-19 = 1881	U-95 = 1895	U-121 = 1436
U-20 = 1882	U-96 = 1896	U-122 = 1437
U-21 = 1883	U-97 = 1897	U-123 = 1438
U-22 = 1884	U-98 = 1898	U-124 = 1439
U-23 = 1885	U-99 = 1899	U-125 = 1440
U-24 = 1886	U-100 = 1900	U-126 = 1441
U-25 = 1887	U-101 = 1901	U-127 = 1442
U-26 = 1888	U-102 = 1902	U-128 = 1443
U-27 = 1889	U-103 = 1903	U-129 = 1444
U-28 = 1890	U-104 = 1904	U-130 = 1445
U-29 = 1891	U-105 = 1905	U-131 = 1446
U-30 = 1892	U-106 = 1906	U-132 = 1447
U-31 = 1893	U-107 = 1907	U-133 = 1448
U-32 = 1894	U-108 = 1908	U-134 = 1449
U-33 = 1895	U-109 = 1909	U-135 = 1450
U-34 = 1896	U-110 = 1910	U-136 = 1451
U-35 = 1897	U-111 = 1911	U-137 = 1452
U-36 = 1898	U-112 = 1912	U-138 = 1453
U-37 = 1899	U-113 = 1913	U-139 = 1454
U-38 = 1900	U-114 = 1914	U-140 = 1455
U-39 = 1901	U-115 = 1915	U-141 = 1456
U-40 = 1902	U-116 = 1916	U-142 = 1457
U-41 = 1903	U-117 = 1917	U-143 = 1458
U-42 = 1904	U-118 = 1918	U-144 = 1459
U-43 = 1905	U-119 = 1919	U-145 = 1460
U-44 = 1906	U-120 = 1920	U-146 = 1461
U-45 = 1907	U-121 = 1921	U-147 = 1462
U-46 = 1908	U-122 = 1922	U-148 = 1463
U-47 = 1909	U-123 = 1923	U-149 = 1464
U-48 = 1910	U-124 = 1924	U-150 = 1465
U-49 = 1911	U-125 = 1925	U-151 = 1466
U-50 = 1912	U-126 = 1926	U-152 = 1467
U-51 = 1913	U-127 = 1927	U-153 = 1468
U-52 = 1914	U-128 = 1928	U-154 = 1469
U-53 = 1915	U-129 = 1929	U-155 = 1470
U-54 = 1916	U-130 = 1930	U-156 = 1471
U-55 = 1917	U-131 = 1931	U-157 = 1472
U-56 = 1918	U-132 = 1932	U-158 = 1473
U-57 = 1919	U-133 = 1933	U-159 = 1474
U-58 = 1920	U-134 = 1934	U-160 = 1475
U-59 = 1921	U-135 = 1935	U-161 = 1476
U-60 = 1922	U-136 = 1936	U-162 = 1477
U-61 = 1923	U-137 = 1937	U-163 = 1478
U-62 = 1924	U-138 = 1938	U-164 = 1479
U-63 = 1925	U-139 = 1939	U-165 = 1480
U-64 = 1926	U-140 = 1940	U-166 = 1481
U-65 = 1927	U-141 = 1941	U-167 = 1482
U-66 = 1928	U-142 = 1942	U-168 = 1483
U-67 = 1929	U-143 = 1943	U-169 = 1484
U-68 = 1930	U-144 = 1944	U-170 = 1485
U-69 = 1931	U-145 = 1945	U-171 = 1486
U-70 = 1932	U-146 = 1946	U-172 = 1487
U-71 = 1933	U-147 = 1947	U-173 = 1488
U-72 = 1934	U-148 = 1948	U-174 = 1489
U-73 = 1935	U-149 = 1949	U-175 = 1490
U-74 = 1936	U-150 = 1950	U-176 = 1491
U-75 = 1937	U-151 = 1951	U-177 = 1492
U-76 = 1938	U-152 = 1952	U-178 = 1493

CONDOMINIUM 09-10-300-010  
HARRISON COUNTY CONDOMINIUMS  
Reg. Dec 10, 1978 Dec. 25, 1979

UNIT	UNIT	UNIT
330-A-1001	330-B-1001	330-C-1001
330-B-1002	330-C-1002	330-D-1002
330-C-1003	330-D-1003	330-E-1003
330-D-1004	330-E-1004	330-F-1004
330-E-1005	330-F-1005	330-G-1005
330-F-1006	330-G-1006	330-H-1006
330-G-1007	330-H-1007	330-I-1007
330-H-1008	330-I-1008	330-J-1008
330-I-1009	330-J-1009	330-K-1009
330-J-1010	330-K-1010	330-L-1010
330-K-1011	330-L-1011	330-M-1011
330-L-1012	330-M-1012	330-N-1012
330-M-1013	330-N-1013	330-O-1013
330-N-1014	330-O-1014	330-P-1014
330-O-1015	330-P-1015	330-Q-1015
330-P-1016	330-Q-1016	330-R-1016
330-Q-1017	330-R-1017	330-S-1017
330-R-1018	330-S-1018	330-T-1018
330-S-1019	330-T-1019	330-U-1019
330-T-1020	330-U-1020	330-V-1020
330-U-1021	330-V-1021	330-W-1021
330-V-1022	330-W-1022	330-X-1022
330-W-1023	330-X-1023	330-Y-1023
330-X-1024	330-Y-1024	330-Z-1024
330-Y-1025	330-Z-1025	

Additional Units For J  
Reg. Mar. 21, 1980 Dec. 25, 1979

UNIT	UNIT	UNIT
330-A-1049	330-C-1049	330-E-1049
330-B-1050	330-D-1050	330-F-1050
330-C-1051	330-E-1051	330-G-1051
330-D-1052	330-F-1052	330-H-1052
330-E-1053	330-G-1053	330-I-1053
330-F-1054	330-H-1054	330-J-1054
330-G-1055	330-I-1055	330-K-1055
330-H-1056	330-J-1056	330-L-1056
330-I-1057	330-K-1057	330-M-1057
330-J-1058	330-L-1058	330-N-1058
330-K-1059	330-M-1059	330-O-1059
330-L-1060	330-N-1060	330-P-1060
330-M-1061	330-O-1061	330-Q-1061
330-N-1062	330-P-1062	330-R-1062

REVISED JAN. 1, 2001