

UNOFFICIAL COPY



Doc#: 0719003034 Fee: \$34.00
Eugene "Gene" Moore RHSP Fee:\$10.00
Cook County Recorder of Deeds
Date: 07/09/2007 10:05 AM Pg: 1 of 6

This document prepared by,
And return to:
Law Offices of Ioana Salajanu
101 N. Wacker, St 101
Chicago, IL 60606

CORRECTION TO THE DECLARATION OF CONDOMINIUM OWNERSHIP, EASEMENTS, RESTRICTIONS AND COVENANTS AND BYLAWS PURSUANT TO THE CONDOMINIUM PROPERTY ACT FOR WEST TOUHY AND NORTH DAMEN CONDOMINIUMS

This declaration, made and entered into this 30 day of June 2007, by 1944 West Touhy Avenue, LLC for convenience hereinafter referred to as "Declarant"

WITNESSETH:

WHEREAS, by a CORRECTION TO THE DECLARATION OF CONDOMINIUM OWNERSHIP, EASEMENTS, RESTRICTIONS AND COVENANTS AND BYLAWS PURSUANT TO THE CONDOMINIUM PROPERTY ACT FOR WEST TOUHY AND NORTH DAMEN CONDOMINIUMS ("Declaration") recorded in the Office of the Recorder of Cook County, Illinois, as Document Number 0634115045, Declarant submitted certain real estate to the provisions of the Illinois Condominium Act ("Act") which property is described in Exhibit A, attached hereto and made a part hereof; and

WHEREAS, pursuant to Paragraph 29 of the Declaration, the Declaration (as defined in the Declaration) reserved the right to make a corrections (as defined in the Declaration) to correct typographical or clerical errors in the Declaration or any Exhibit or Appendix thereto and to otherwise bring the Declaration into compliance with the Act (as defined in the Declaration); and

RECORDING FEE 34
DATE 7/9/07 COPIES 6
OK BY AE

UNOFFICIAL COPY

WHEREAS, the mechanical room on the basement elevation of Unit 1 of 7211 N. Damen, Chicago, IL., on the Plat of Survey originally filed with the Declaration was incorrectly omitted from said survey.

WHEREAS, the Declarant does hereby amend the Declaration as follows:

1. Exhibit "D" shall be stricken and replaced with the following attached Exhibit "D". The mechanical room is identified as a common element on the basement elevation of Unit 1 of 7211 N. Damen, Chicago, IL.



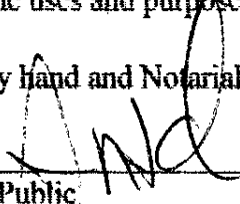
By:

**1944 WEST TOUHY AVENYUE, LLC
BY: PAVEL ZISSU**

STATE OF ILLINOIS)
)
COUNTY OF COOK) SS.

I, the undersigned, a Notary Public in and for the County and State aforesaid, DO
HEREBY CERTIFY _____ on behalf of **Pavel Zissu, a manager of
1944 West Touhy Avenue, LLC**, personally known to me to be the same person whose
name is subscribed to the foregoing instrument as such Manager, appeared before me this
day in person and acknowledged that he signed and delivered the said instrument as his
own free and voluntary act and as the free and voluntary act of said Limited Liability
Company for the uses and purposes therein set forth.

Given under my hand and Notarial Seal

Date _____, 2007
Notary Public, 



UNOFFICIAL COPY

ENGINEERING SURVEY
TOPOGRAPHY
BOUNDARY
ALTA & MORTGAGE
CONDOMINIUM

WAYLS SURVEY, LTD. PLAT OF SURVEY OF

1130 SOUTH WABASH AVENUE
CHICAGO, IL 60605
TEL: (312) 834-0189
CELL: (708) 785-1985
FAX: (312) 834-0263

EXHIBIT 'D'

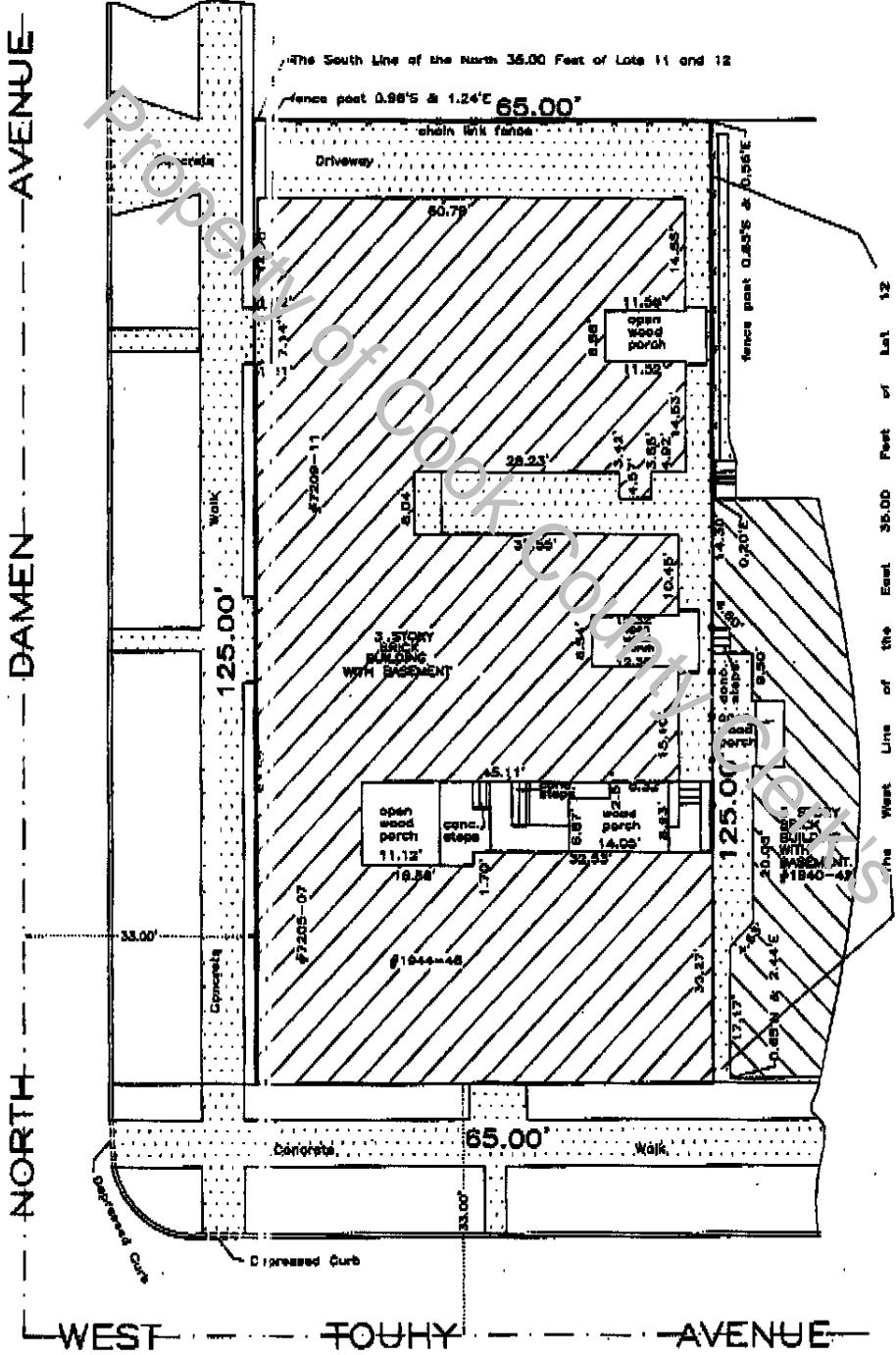


LOT 11 (EXCEPT THE NORTH 35.00 FEET THEREOF) AND LOT 12 (EXCEPT THE NORTH 35.00 FEET AND THE EAST 35.00 FEET THEREOF) IN BLOCK 4, IN TOLUHY'S ADDITION TO ROGER'S PARK, BEING A SUBDIVISION OF BLOCKS 3 AND 4, IN ROGER'S PARK, IN SECTION 32, TOWNSHIP 41 NORTH, RANGE 14, EAST OF THE THIRD PRINCIPAL MERIDIAN, IN COOK COUNTY, ILLINOIS.

COMMONLY KNOWN AS 1844-46 WEST TOLUHY AVENUE & 7205, 7207, 7209, 7211 NORTH DAMEN AVENUE, CHICAGO, ILLINOIS.

PIN: 11-30-418-021-0000

WEST TOLUHY AND NORTH DAMEN CONDOMINIUMS



UPDATE: OCTOBER 13, 2006
DIMENSIONS ARE NOT TO BE ASSUMED FROM SCALING.
ORDER NO. 3881-2006
SCALE: 1"=32'-10"
DATE: MAY 15, 2006
ORDERED BY: FAUL

THIS PROFESSIONAL SERVICE CONFORMS TO THE CURRENT ILLINOIS MINIMUM STANDARDS FOR A BOUNDARY SURVEY.

FOR BUILDING LINES, EASEMENTS AND OTHER RESTRICTIONS NOT SHOWN HEREON, REFER TO YOUR DEED, TITLE POLICY AND LOCAL ZONING ORDINANCE, ETC.

LEGAL DESCRIPTION NOTED ON THIS PLAT WAS PROVIDED BY THE CLIENT AND MUST BE COMPARED WITH DEEDS AND/OR TITLE POLICY.

DIMENSIONS ARE SHOWN IN FEET AND DECIMAL PARTS THEREOF. NO CORNERS WERE MONUMENTED PER CUSTOMER REQUEST.

STATE OF ILLINOIS)
COUNTY OF COOK) ss.

WE, WAYLS SURVEY, LTD., do hereby certify that we have performed the above described property and that the plat herein shown is a true and correct representation of said survey.

SIGNATURE: _____
PROFESSIONAL ILLINOIS LAND SURVEYOR NO. 2919

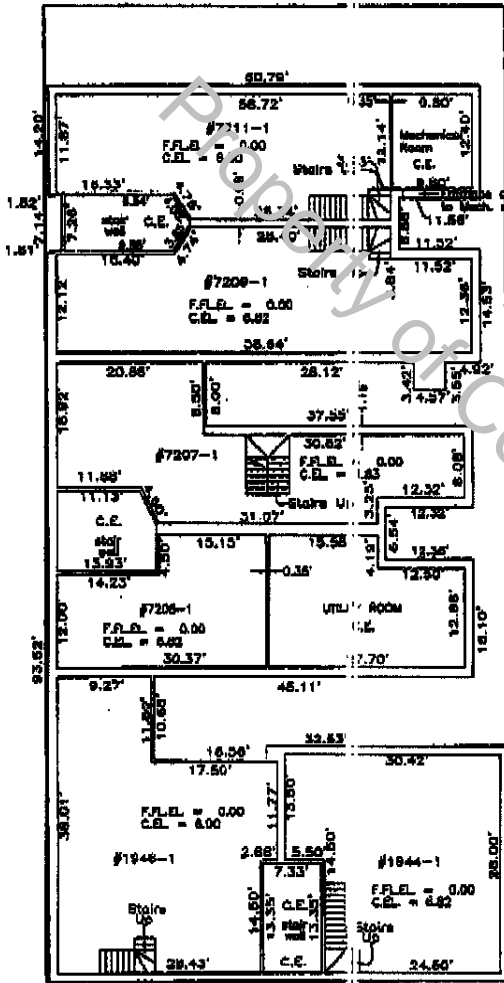
0719003034

UNOFFICIAL COPY

EXHIBIT "D"

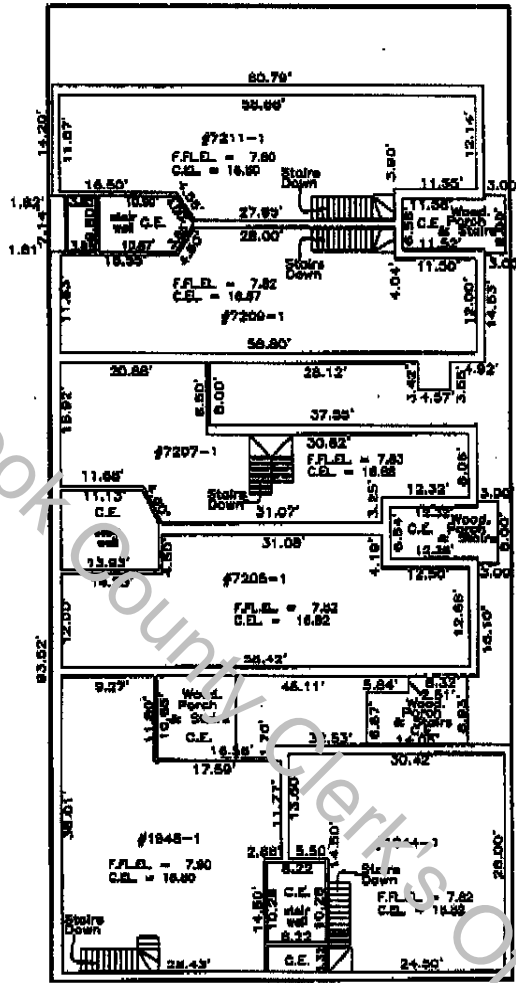
PIN: 11 - 30 - 418 - 021 - 0000

WEST TOLUHY AND NORTH DAMEN CONDOMINIUMS



BASEMENT

1944-48 W. TOLUHY AVE.



FIRST FLOOR

1944-48 W. TOLUHY AVE.

VERTICAL PLANES SHOWN HEREON ARE MEASURED ON THE TOP OF FINISHED FLOOR AND TO THE BOTTOM OF FINISHED CEILINGS MEASURED TO THE INTERIOR FACE OF THE WALL ON THE INTERIOR WALL ELEVATIONS SHOWN HEREON ARE IN RELATION TO THE ASSUMED ELEVATION = 0.00

LEGEND:
 F.F.L. = FINISH FLOOR ELEVATION
 C.E.L. = CEILING ELEVATION
 C.E. = COMMON ELEMENT
 L.C.E. = LIMITED COMMON ELEMENT

0719003034

UNOFFICIAL COPY

EXHIBIT "D"

PIN: 11 - 30 - 418 - 021 - 0000

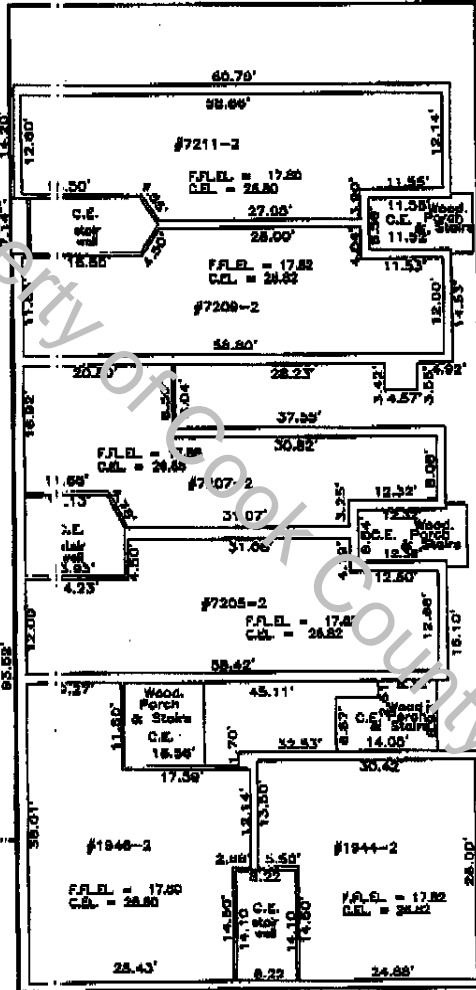
WEST TOWHY AND NORTH DAMEN CONDOMINIUMS

DAMEN AVENUE

DAMEN AVENUE

NORTH

WEST TOWHY AVENUE



SECOND FLOOR

1844-46 W. TOWHY AVE.

VERTICAL PLANES SHOWN HEREON ARE MEASURED IN THE TOP OF FINISHED FLOOR AND TO THE BOTTOM OF FINISHED CEILING. HORIZONTAL PLANES SHOWN HEREON ARE MEASURED TO THE INTERIOR FACE OF THE WALL. THE INTERIOR WALL ELEVATIONS SHOWN HEREON ARE IN RELATION TO THE N.E. CORNER ON BASEMENT FINISH FLOOR. ASSUMED ELEVATION = 0.00

LEGEND:
 F.F.E.L. = FINISH FLOOR ELEVATION
 C.E. = CEILING ELEVATION
 C.E. = COMMON ELEMENT
 L.C.E. = LIMITED COMMON ELEMENT

PAGE 3 OF 4

0719003034

UNOFFICIAL COPY

EXHIBIT "D"

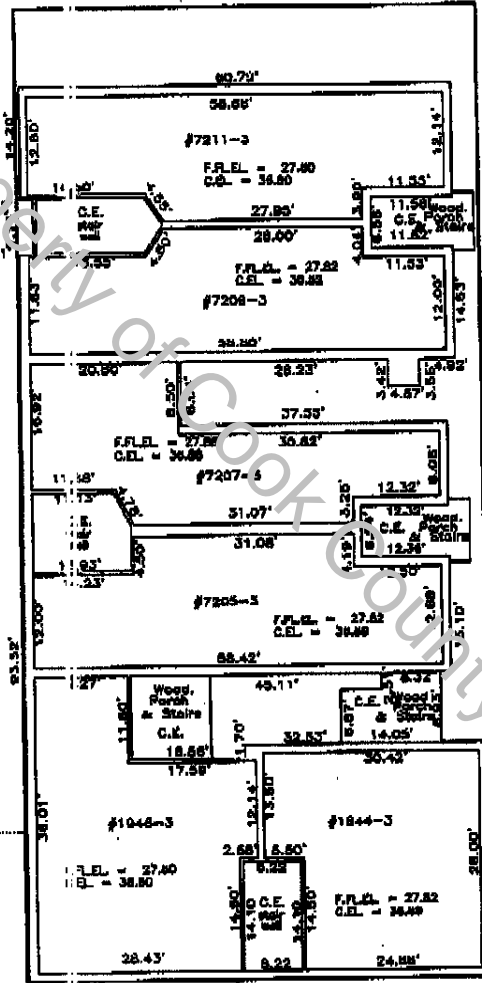
PDN: 11-31-418-021-0000
WEST TOUHY AND NORTH DAMEN CONDOMINIUMS

NORTH
DAMEN
AVENUE

DAMEN

NORTH

WEST TOUHY AVENUE



THIRD FLOOR

1044-46 W. TOUHY AVE.

VERTICAL PLANES SHOWN HEREON ARE MEASURED ON THE TOP OF FINISHED FLOOR AND TO THE BOTTOM OF FINISHED CEILING. HORIZONTAL PLANES SHOWN HEREON ARE MEASURED TO THE INTERIOR FACE OF THE WALLS. ON THE INTERIOR WALL ELEVATIONS SHOWN HEREON ARE IN RELATION TO THE N.C. CORNER ON BASEMENT FINISH FLOOR. ASSUMED ELEVATION = 0.00

LEGEND:
 F.F.E.L. = FINISH FLOOR ELEVATION
 C.E. = CEILING ELEVATION
 C.E. = COMMON ELEMENT
 L.C.E. = LIMITED COMMON ELEMENT

0719003034