

"MONUMENT RECORD"

OF  
LAND SURVEY MONUMENTS  
SITUATED IN SECTION 12  
TOWNSHIP 37 NORTH  
RANGE 11 EAST, 3RD P.M.  
COOK COUNTY, IL



\*2407308020\*

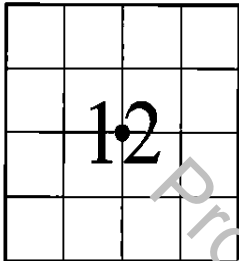
Doc# 2407308020 Fee \$88.00

KAREN A. YARBROUGH

COOK COUNTY CLERK'S OFFICE

DATE: 3/13/2024 10:59 AM

PAGE: 1 OF 4

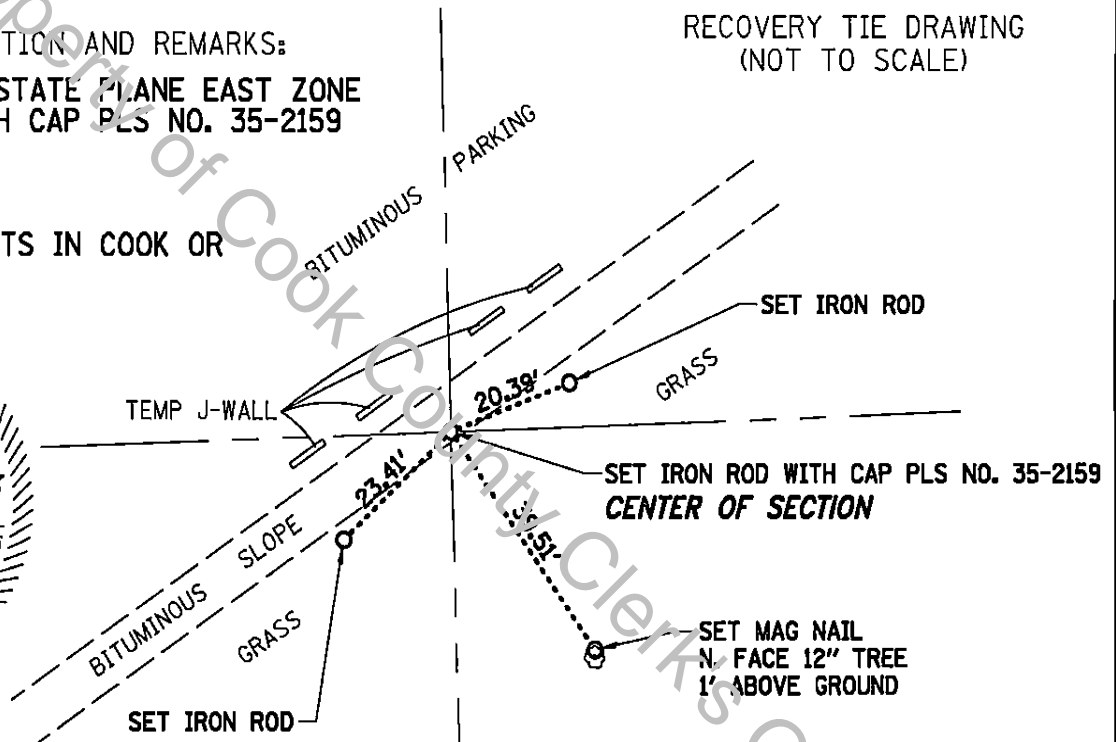
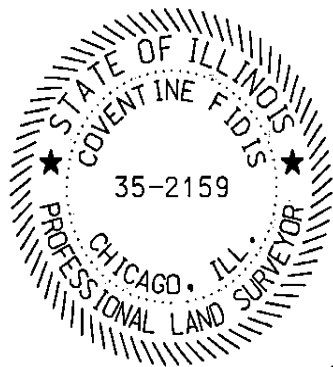


This space for Recorder's use only

MONUMENT DESCRIPTION AND REMARKS:  
NAD 83 (2007) IL STATE PLANE EAST ZONE  
SET IRON ROD WITH CAP PLS NO. 35-2159  
N 1836849.320  
E 1096069.857

NO PRIOR DOCUMENTS IN COOK OR  
DUPAGE COUNTY

RECOVERY TIE DRAWING  
(NOT TO SCALE)



**SURVEYOR NOTE**  
CENTER OF SECTION 12-37-11 SET PER PLAT  
OF SURVEY BY LOUIS ALSWAGE, PLS,  
CERTIFIED MAY 12, 1949.

RETURN/MAIL TO:

RETURN/MAIL TO:

**AMERICAN**

SURVEYING & ENGINEERING, LTD.  
ILLINOIS PROFESSIONAL DESIGN FIRM NO. 184-003192  
200 N. LaSalle St. Suite 2630, Chicago, IL 60604  
312-277-2000 www.americansurvey.com

RECORDING FEE

DATE \_\_\_\_\_ COPIES \_\_\_\_\_

SHEET 1 OF 4

STATE OF ILLINOIS )  
COUNTY OF COOK ) SS

I, COVENTINE FIDIS, HEREBY  
CERTIFY THAT THIS DOCUMENT WAS PREPARED  
UNDER MY DIRECTION IN ACCORDANCE WITH  
THE PUBLIC ACT 765 ILCS 220 AND THE ABOVE  
DATA IS GIVEN UNDER MY HAND AND SEAL THIS  
13th DAY OF MARCH, 2024 A.D.

*L.A.*

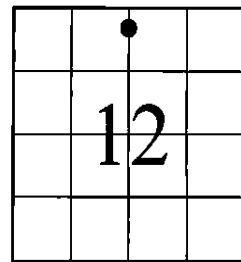
ILLINOIS PROFESSIONAL  
LAND SURVEYOR NO. 2159  
MY LICENSE EXPIRES 11/30/24  
PROFESSIONAL DESIGN FIRM NO. 184-003192

UNOFFICIAL COPY

"MONUMENT RECORD"

OF  
LAND SURVEY MONUMENTS  
SITUATED IN SECTION 12  
TOWNSHIP 37 NORTH  
RANGE 11 EAST, 3RD P.M.  
COOK COUNTY, IL

RECOVERY TIE DRAWING  
(NOT TO SCALE)



COUNTY LINE PER DOC.  
NO. 4180218

DUPAGE CO.  
COOK CO.

DES PLAINES  
RIVER

TREES AND BRUSH

BITUMINOUS BIKE PATH

N 1°40'36" W

SET MAG NAIL  
NE. FACE 14" TREE  
1' ABOVE GROUND

SET MAG NAIL  
IN BIT. PVMT.

TREES AND BRUSH

SET MAG SPIKE  
POINT ON E. LINE, FRACTIONAL  
NW. 1/4, 12-37-11, S. OF  
DES PLAINES RIVER  
(N. 1/4 COR. NOT SET  
IN GOVT. SURVEY)

SET MAG NAIL  
IN BIT. PVMT.

GRASS

GRASS

MONUMENT DESCRIPTION AND REMARKS:  
NAD 83 (2007) IL STATE PLANE EAST ZONE  
SET MAG SPIKE  
N 1837874.545  
E 1096039.845

NO PRIOR DOCUMENTS IN COOK OR  
DUPAGE COUNTY

RETURN/MAIL TO:



AMERICAN

SURVEYING & ENGINEERING, LTD.  
ILLINOIS PROFESSIONAL DESIGN FIRM NO. 184-003192  
200 N. LaSalle St. Suite 2630, Chicago, IL 60601  
312-277-2000 www.americansurvey.com

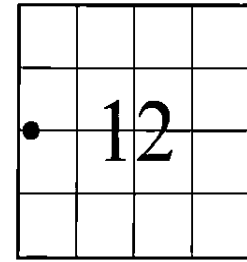
SHEET 2 OF 4

UNOFFICIAL COPY

"MONUMENT RECORD"

OF  
LAND SURVEY MONUMENTS  
SITUATED IN SECTION 12  
TOWNSHIP 37 NORTH  
RANGE 11 EAST, 3RD P.M.  
COOK COUNTY, IL

RECOVERY TIE DRAWING  
(NOT TO SCALE)



COUNTY LINE PER DOC.  
NO. 4180218

DUPAGE CO.  
COOK CO.

POINT ON S. LINE, FRACTIONAL NW. 1/4,  
12-37-11, EAST OF DES PLAINES RIVER  
(W. 1/4 COR. NOT SET IN GOVT. SURVEY)  
SET MAG SPIKE

SET 3/4" IRON  
PIPE WITH CAP

SET 3/4" IRON  
PIPE WITH CAP

N 88°27'40" W

10.76'

53.89'

BITUMINOUS BIKE PATH  
58.07'

SET 3/4" IRON  
PIPE WITH CAP

MONUMENT DESCRIPTION AND REMARKS:  
NAD 83 (2007) IL STATE PLANE EAST ZONE  
SET MAG SPIKE  
N  
E

PRIOR COOK CO. DOCUMENTS:  
99836343

RETURN/MAIL TO:



AMERICAN

SURVEYING & ENGINEERING, LTD.  
ILLINOIS PROFESSIONAL DESIGN FIRM NO. 184-003192  
200 N. LaSalle St. Suite 2630, Chicago, IL 60601  
312-277-2000 www.americansurvey.com

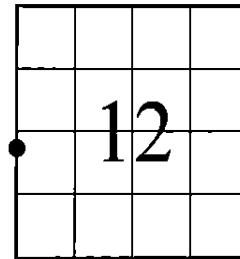
SHEET 3 OF 4

UNOFFICIAL COPY

"MONUMENT RECORD"

OF  
LAND SURVEY MONUMENTS  
SITUATED IN SECTION 12  
TOWNSHIP 37 NORTH  
RANGE 11 EAST, 3RD P.M.  
COOK COUNTY, IL

RECOVERY TIE DRAWING  
(NOT TO SCALE)



COUNTY LINE PER DOC.  
NO. 4180218

DES PLAINES  
RIVER

DUPAGE CO.  
COOK CO.

TREES AND BRUSH

TREES AND BRUSH

SET MAG NAIL  
SE. FACE 10" TREE  
1' ABOVE GROUND

BITUMINOUS BIKE PATH

SET MAG SPIKE  
POINT ON W. LINE, FRACTIONAL SW. 1/4,  
12-37-11, SOUTH OF DES PLAINES RIVER  
(W. 1/4 COR. NOT SET IN GOV'T. SURVEY)

SET MAG NAIL  
IN BIT. PVMT.

TREES AND BRUSH

SET MAG NAIL  
IN BIT. PVMT.

GRASS

SW. COR. 12-37-11  
FOUND 1 1/2" IRON PIPE  
PER DOC. NO. 99836343

N 1°35'43" W

N 1°35'43" W

30.10'

28.51'

25.80'

MONUMENT DESCRIPTION AND REMARKS:  
NAD 83 (2007) IL STATE PLANE EAST ZONE  
SET MAG SPIKE  
N 1836312.117  
E 1093437.936

PRIOR COOK CO. DOCUMENTS:  
99836343

RETURN/MAIL TO:



AMERICAN

SURVEYING & ENGINEERING, LTD.  
ILLINOIS PROFESSIONAL DESIGN FIRM NO. 184-003192  
200 N. LaSalle St. Suite 2630, Chicago, IL 60601  
312-277-2000 www.americansurvey.com

SHEET 4 OF 4

CORNER CD77

222099

3-13-2024 222099\_Mon Recs\_3-13-2024