

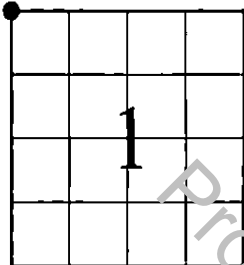
UNOFFICIAL COPY

"MONUMENT RECORD"

OF
LAND SURVEY MONUMENTS
SITUATED IN SECTION 1
TOWNSHIP 42 NORTH
RANGE 9 EAST, 3RD P.M.
COOK COUNTY, IL



Doc# 2407310006 Fee \$88.00
KAREN A. YARBROUGH
COOK COUNTY CLERK'S OFFICE
DATE: 3/13/2024 10:48 AM
PAGE: 1 OF 2



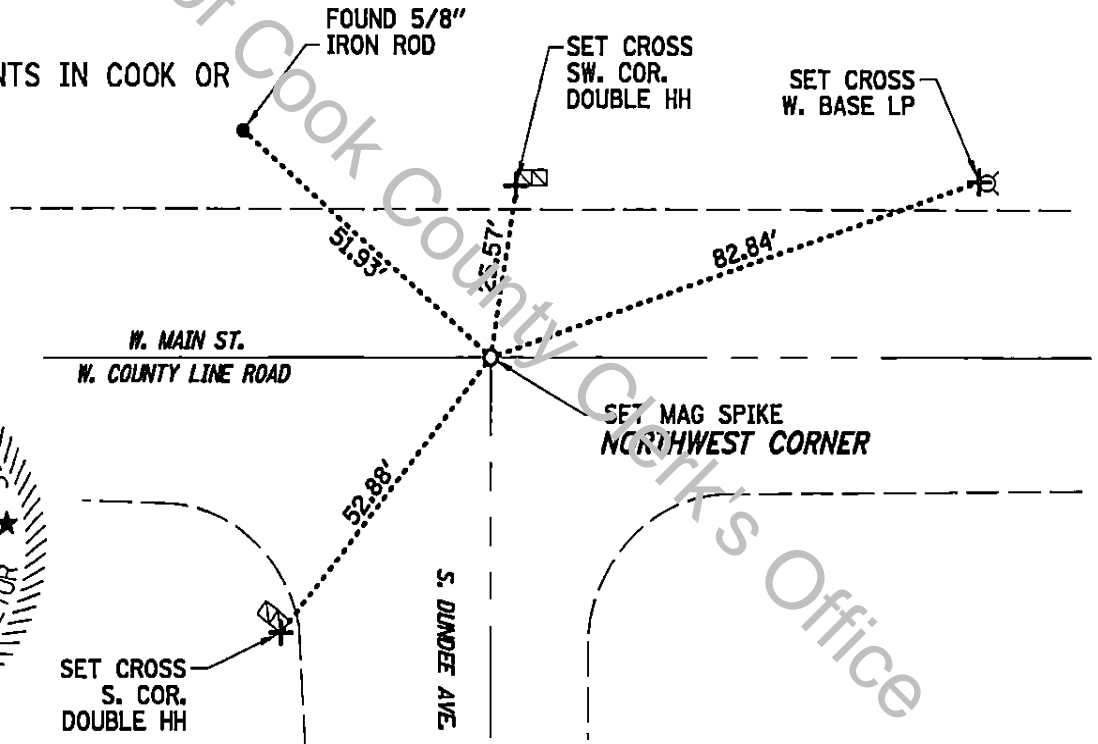
This space for Recorder's use only

MONUMENT DESCRIPTION AND REMARKS:

NAD 83 (2007) IL STATE PLANE EAST ZONE
SET MAG SPIKE
N 1998848.563
E 1036431.936

RECOVERY TIE DRAWING
(NOT TO SCALE)

NO PRIOR DOCUMENTS IN COOK OR
LAKE COUNTY



RETURN/MAIL TO:

STATE OF ILLINOIS)
COUNTY OF COOK)SS



RETURN/MAIL TO:
AMERICAN

SURVEYING & ENGINEERING, LTD.
ILLINOIS PROFESSIONAL DESIGN FIRM NO. 184-003192
200 N. LaSalle St. Suite 2630, Chicago, IL 60601
312-277-2000 www.americansurvey.com

I, COVENTINE FIDIS, HEREBY
CERTIFY THAT THIS DOCUMENT WAS PREPARED
UNDER MY DIRECTION IN ACCORDANCE WITH
THE PUBLIC ACT 765 ILCS 220 AND THE ABOVE
DATA IS GIVEN UNDER MY HAND AND SEAL THIS
13th DAY OF MARCH, 2024 A.D.

ILLINOIS PROFESSIONAL
LAND SURVEYOR NO. 2159
MY LICENSE EXPIRES 11/30/24
PROFESSIONAL DESIGN FIRM NO. 184-003192

RECORDING FEE 88.00

SHEET 1 OF 2 DATE 3/13/24 COPIES 4x

OK BY EK

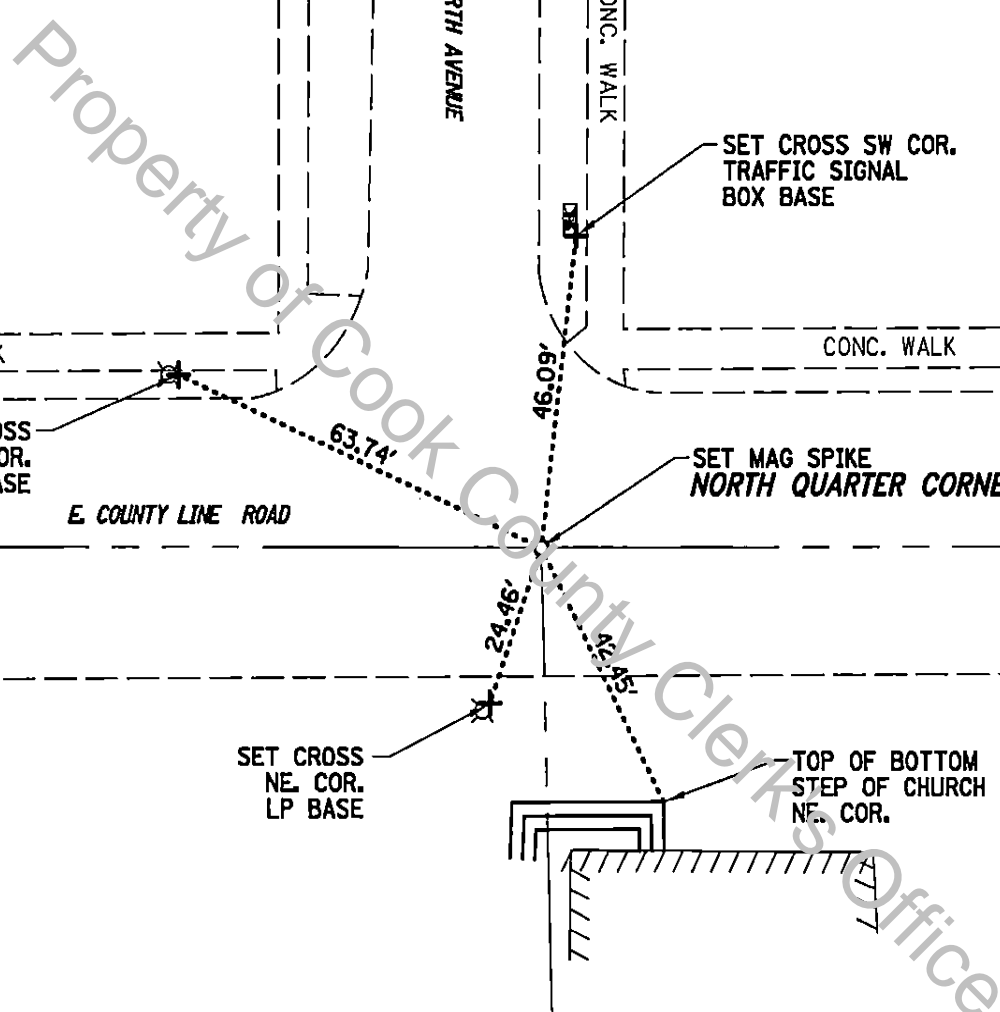
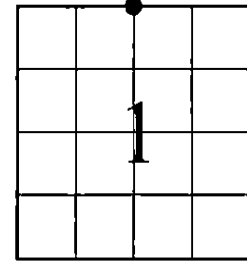
3-13-2024 222099_Mon Recs_3-13-2024

UNOFFICIAL COPY

"MONUMENT RECORD"

OF
LAND SURVEY MONUMENTS
SITUATED IN SECTION 1
TOWNSHIP 42 NORTH
RANGE 9 EAST, 3RD P.M.
COOK COUNTY, IL

RECOVERY TIE DRAWING
(NOT TO SCALE)



MONUMENT DESCRIPTION AND REMARKS:
NAD 83 (2007) IL STATE PLANE EAST ZONE
SET MAG SPIKE
N 1998844.143
E 1039050.301

NO PRIOR DOCUMENTS IN COOK OR
LAKE COUNTY

RETURN/MAIL TO:



AMERICAN

SURVEYING & ENGINEERING, LTD.
ILLINOIS PROFESSIONAL DESIGN FIRM NO. 184-003192
200 N. LaSalle St. Suite 2630, Chicago, IL 60601
312-277-2000 www.americansurvey.com

SHEET 2 OF 2