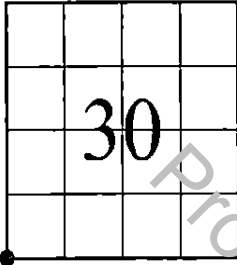


"MONUMENT RECORD"

OF
LAND SURVEY MONUMENTS
SITUATED IN SECTION 30
TOWNSHIP 42 NORTH
RANGE 9 EAST, 3RD P.M.
COOK COUNTY, IL



Doc# 2407311045 Fee \$88.00
KAREN A. YARBROUGH
COOK COUNTY CLERK'S OFFICE
DATE: 3/13/2024 10:54 AM
PAGE: 1 OF 2



This space for Recorder's use only

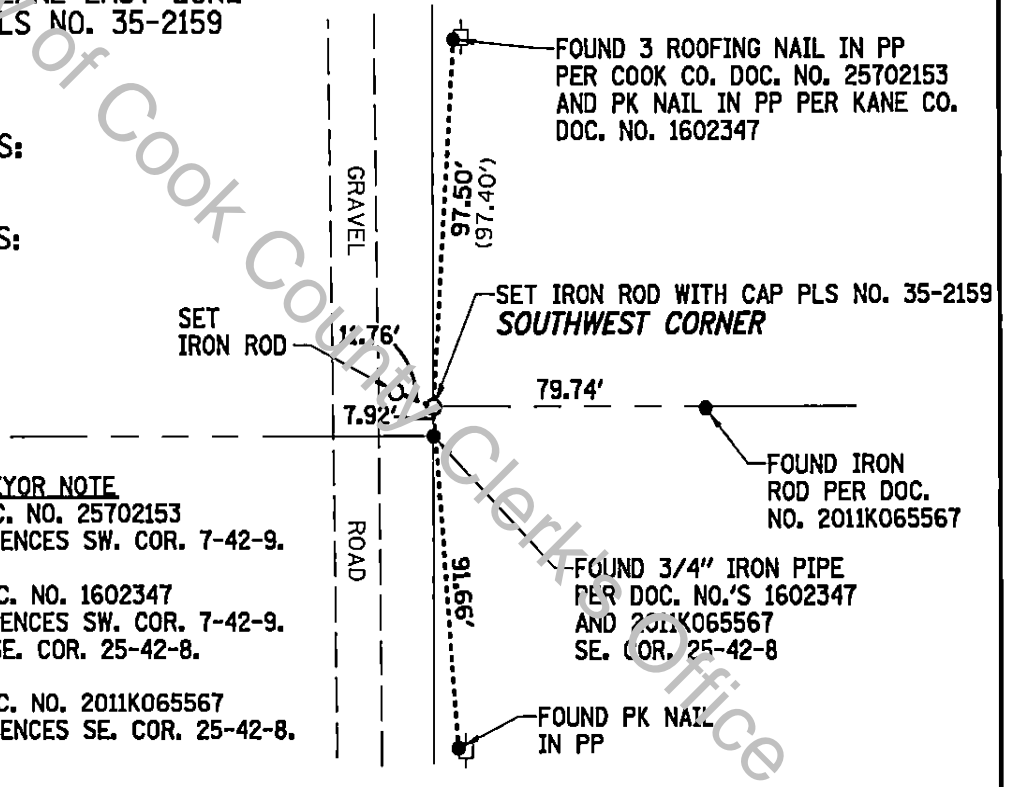
MONUMENT DESCRIPTION AND REMARKS:

NAD 83 (2007) IL STATE PLANE EAST ZONE
SET IRON ROD WITH CAP PLS NO. 35-2159
N 1972327.522
E 1010060.412

PRIOR COOK CO. DOCUMENTS:
25702153

PRIOR KANE CO. DOCUMENTS:
1602347, 2011K065567

RECOVERY TIE DRAWING
(NOT TO SCALE)



FOUND 3 ROOFING NAIL IN PP
PER COOK CO. DOC. NO. 25702153
AND PK NAIL IN PP PER KANE CO.
DOC. NO. 1602347

SET IRON ROD WITH CAP PLS NO. 35-2159
SOUTHWEST CORNER

SET IRON ROD 11.76'

79.74'

7.92'

FOUND IRON
ROD PER DOC.
NO. 2011K065567

FOUND 3/4" IRON PIPE
PER DOC. NO.'S 1602347
AND 2011K065567
SE. COR. 25-42-8

FOUND PK NAIL
IN PP

- SURVEYOR NOTE**
1. DOC. NO. 25702153
REFERENCES SW. COR. 7-42-9.
 2. DOC. NO. 1602347
REFERENCES SW. COR. 7-42-9.
AND SE. COR. 25-42-8.
 3. DOC. NO. 2011K065567
REFERENCES SE. COR. 25-42-8.



RETURN/MAIL TO:

STATE OF ILLINOIS)
COUNTY OF COOK) SS

I, COVENTINE FIDIS, HEREBY
CERTIFY THAT THIS DOCUMENT WAS PREPARED
UNDER MY DIRECTION IN ACCORDANCE WITH
THE PUBLIC ACT 765 ILCS 220 AND THE ABOVE
DATA IS GIVEN UNDER MY HAND AND SEAL THIS
13th DAY OF MARCH, 2024 A.D.

ILLINOIS PROFESSIONAL
LAND SURVEYOR NO. 2159
MY LICENSE EXPIRES 11/30/24
PROFESSIONAL DESIGN FIRM NO. 184-003192

RETURN/MAIL TO:
AMERICAN

SURVEYING & ENGINEERING, LTD.
ILLINOIS PROFESSIONAL DESIGN FIRM NO. 184-003192
200 N. LaSalle St. Suite 2630, Chicago, IL 60601
312-277-2000 www.americansurvey.com

RECORDING FEE 88.00

SHEET 1 OF 2

DATE 3/13/24 COPIES 4x

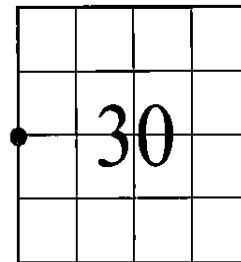
OK BY EK

UNOFFICIAL COPY

"MONUMENT RECORD"

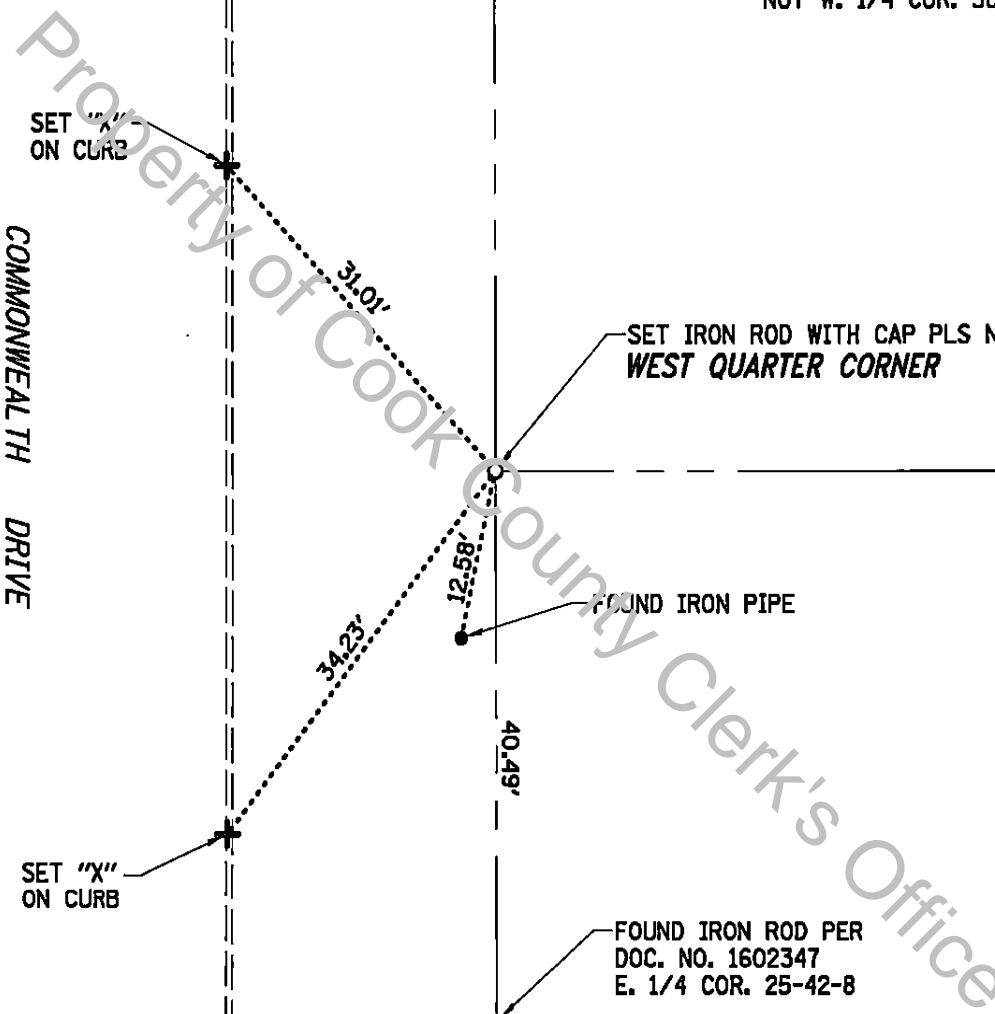
OF
LAND SURVEY MONUMENTS
SITUATED IN SECTION 30
TOWNSHIP 42 NORTH
RANGE 9 EAST, 3RD P.M.
COOK COUNTY, IL

RECOVERY TIE DRAWING
(NOT TO SCALE)



SURVEYOR NOTE

DOC. NO. 1602347 REFERENCES
E. 1/4 COR. 25-42-8 ONLY AND
NOT W. 1/4 COR. 30-42-9.



MONUMENT DESCRIPTION AND REMARKS:
NAD 83 (2007) IL STATE PLANE EAST ZONE
SET IRON ROD WITH CAP PLS NO. 35-2159
N 1974979.516
E 1010054.734

PRIOR KANE CO. DOCUMENTS:
1602347

RETURN/MAIL TO:



AMERICAN

SURVEYING & ENGINEERING, LTD.
ILLINOIS PROFESSIONAL DESIGN FIRM NO. 184-003192
200 N. LaSalle St. Suite 2630, Chicago, IL 60601
312-277-2000 www.americansurvey.com

SHEET 2 OF 2

3-13-2024 222099_Mon Recs_3-13-2024