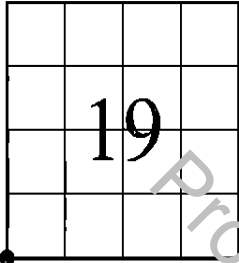


"MONUMENT RECORD"

OF
LAND SURVEY MONUMENTS
SITUATED IN SECTION 19
TOWNSHIP 42 NORTH
RANGE 9 EAST, 3RD P.M.
COOK COUNTY, IL



Doc# 2407311046 Fee \$88.00
KAREN A. YARBROUGH
COOK COUNTY CLERK'S OFFICE
DATE: 3/13/2024 10:55 AM
PAGE: 1 OF 2



This space for Recorder's use only

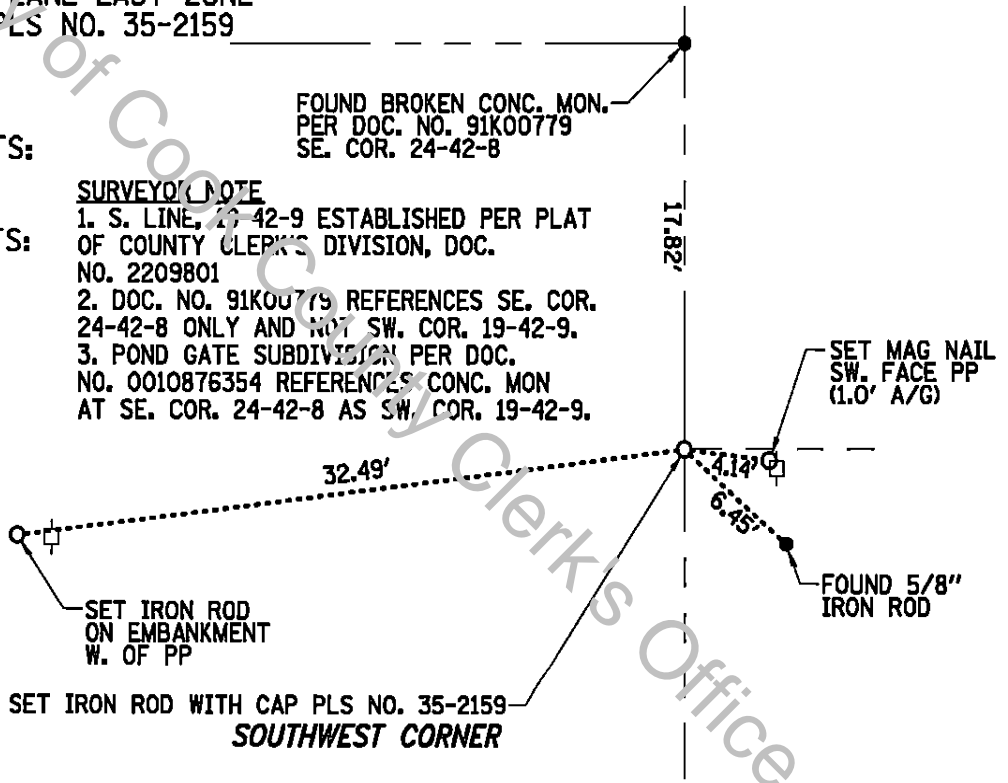
MONUMENT DESCRIPTION AND REMARKS:

NAD 83 (2007) IL STATE PLANE EAST ZONE
SET IRON ROD WITH CAP PLS NO. 35-2159
N 1977586.531
E 1010049.154

PRIOR COOK CO. DOCUMENTS:
2209801

PRIOR KANE CO. DOCUMENTS:
91K00779

RECOVERY TIE DRAWING
(NOT TO SCALE)



SURVEYOR'S NOTE

- 1. S. LINE, 24-42-9 ESTABLISHED PER PLAT OF COUNTY CLERK'S DIVISION, DOC. NO. 2209801
- 2. DOC. NO. 91K00779 REFERENCES SE. COR. 24-42-8 ONLY AND NOT SW. COR. 19-42-9.
- 3. POND GATE SUBDIVISION PER DOC. NO. 0010876354 REFERENCES CONC. MON AT SE. COR. 24-42-8 AS SW. COR. 19-42-9.



RETURN/MAIL TO:

STATE OF ILLINOIS)
COUNTY OF COOK) SS

I, COVENTINE FIDIS, HEREBY CERTIFY THAT THIS DOCUMENT WAS PREPARED UNDER MY DIRECTION IN ACCORDANCE WITH THE PUBLIC ACT 765 ILCS 220 AND THE ABOVE DATA IS GIVEN UNDER MY HAND AND SEAL THIS 13th DAY OF MARCH, 2024 A.D.

RETURN/MAIL TO:
AMERICAN

SURVEYING & ENGINEERING, LTD. **88.00**
ILLINOIS PROFESSIONAL DESIGN FIRM NO. 184-003192
200 N. LaSalle St. Suite 2630, Chicago, IL 60601
312.277.2000 www.americansurveyors.com

OK BY EK

SHEET 1 OF 2

[Signature]
ILLINOIS PROFESSIONAL
LAND SURVEYOR NO. 2159
MY LICENSE EXPIRES 11/30/24
PROFESSIONAL DESIGN FIRM NO. 184-003192

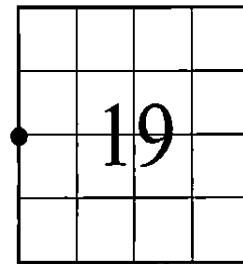
3-13-2024 222099_Mon Recs. 3-13-2024

UNOFFICIAL COPY

"MONUMENT RECORD"

OF
LAND SURVEY MONUMENTS
SITUATED IN SECTION 19
TOWNSHIP 42 NORTH
RANGE 9 EAST, 3RD P.M.
COOK COUNTY, IL

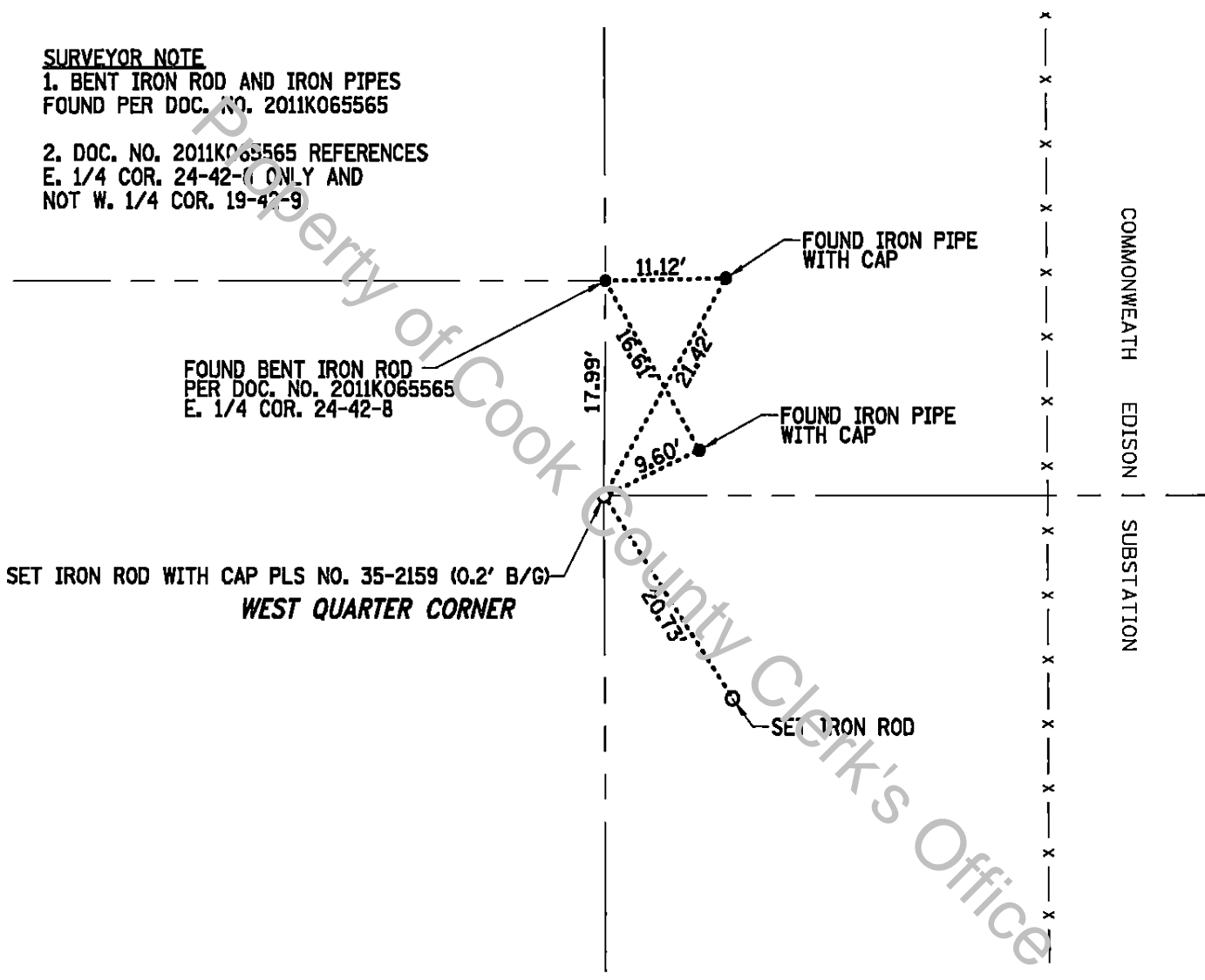
RECOVERY TIE DRAWING
(NOT TO SCALE)



SURVEYOR NOTE

1. BENT IRON ROD AND IRON PIPES
FOUND PER DOC. NO. 2011K065565

2. DOC. NO. 2011K065565 REFERENCES
E. 1/4 COR. 24-42-0 ONLY AND
NOT W. 1/4 COR. 19-42-9



MONUMENT DESCRIPTION AND REMARKS:
NAD 83 (2007) IL STATE PLANE EAST ZONE
SET IRON ROD WITH CAP PLS NO. 35-2159
N 1980227.792
E 1010036.718

PRIOR KANE CO. DOCUMENTS:
2011K065565

RETURN/MAIL TO:



AMERICAN

SURVEYING & ENGINEERING, LTD.
ILLINOIS PROFESSIONAL DESIGN FIRM NO. 184-003192
200 N. LaSalle St. Suite 2630, Chicago, IL 60601
312-277-2000 www.americansurvey.com