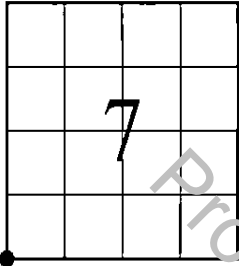


"MONUMENT RECORD"

OF
LAND SURVEY MONUMENTS
SITUATED IN SECTION 7
TOWNSHIP 42 NORTH
RANGE 9 EAST, 3RD P.M.
COOK COUNTY, IL



Doc# 2407311048 Fee \$88.00
KAREN A. YARBROUGH
COOK COUNTY CLERK'S OFFICE
DATE: 3/13/2024 10:58 AM
PAGE: 1 OF 3



This space for Recorder's use only

MONUMENT DESCRIPTION AND REMARKS:
NAD 83 (2007) IL STATE PLANE EAST ZONE
FOUND 1 1/2" IRON PIPE
N 1988155.598
E 1010021.547

PRIOR KANE CO. DOCUMENTS:
2011K065562

FOUND 3/4" IRON PIPE AT NE. COR.
SEC. 13-42-8 PER DOC. NO. 2011K065562
IS 1.58' E. OF A LINE BETWEEN THE SW.
COR. AND W. 1/4 COR. OF SEC. 7-42-9 AS
MONUMENTED

FOUND BROKEN CONC.
MONUMENT 0.50' N.
OF CORNER

RECOVERY TIE DRAWING
(NOT TO SCALE)

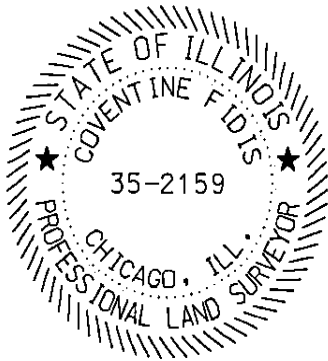
FOUND 5/8" IRON ROD

FOUND 5/8" IRON ROD

SET MAG NAIL
W. FACE PP.

FOUND 1 1/2" IRON PIPE
SOUTHWEST CORNER

SET RR SPIKE
E. FACE 24" TREE



RETURN/MAIL TO:

STATE OF ILLINOIS)
COUNTY OF COOK) SS

RETURN/MAIL TO:

AMERICAN

SURVEYING & ENGINEERING, LTD. **28.00**
ILLINOIS PROFESSIONAL DESIGN FIRM NO. 184-003192
200 N. LaSalle St. Suite 2630, Chicago, IL 60601
312-277-2000 www.americansurvey.com

I, COVENTINE FIDIS, HEREBY
CERTIFY THAT THIS DOCUMENT WAS PREPARED
UNDER MY DIRECTION IN ACCORDANCE WITH
THE PUBLIC ACT 765 ILCS 220 AND THE ABOVE
DATA IS GIVEN UNDER MY HAND AND SEAL THIS
13th DAY OF MARCH, 2024 A.D.

[Signature]

ILLINOIS PROFESSIONAL
LAND SURVEYOR NO. 2159
MY LICENSE EXPIRES 11/30/24
PROFESSIONAL DESIGN FIRM NO. 184-003192

OK BY EK

SHEET 1 OF 3

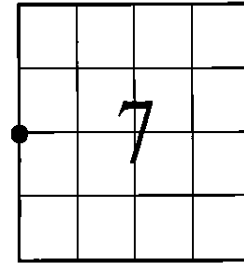
3-13-2024 222099_Mon Recs_3-13-2024

UNOFFICIAL COPY

"MONUMENT RECORD"

OF
LAND SURVEY MONUMENTS
SITUATED IN SECTION 7
TOWNSHIP 42 NORTH
RANGE 9 EAST, 3RD P.M.
COOK COUNTY, IL

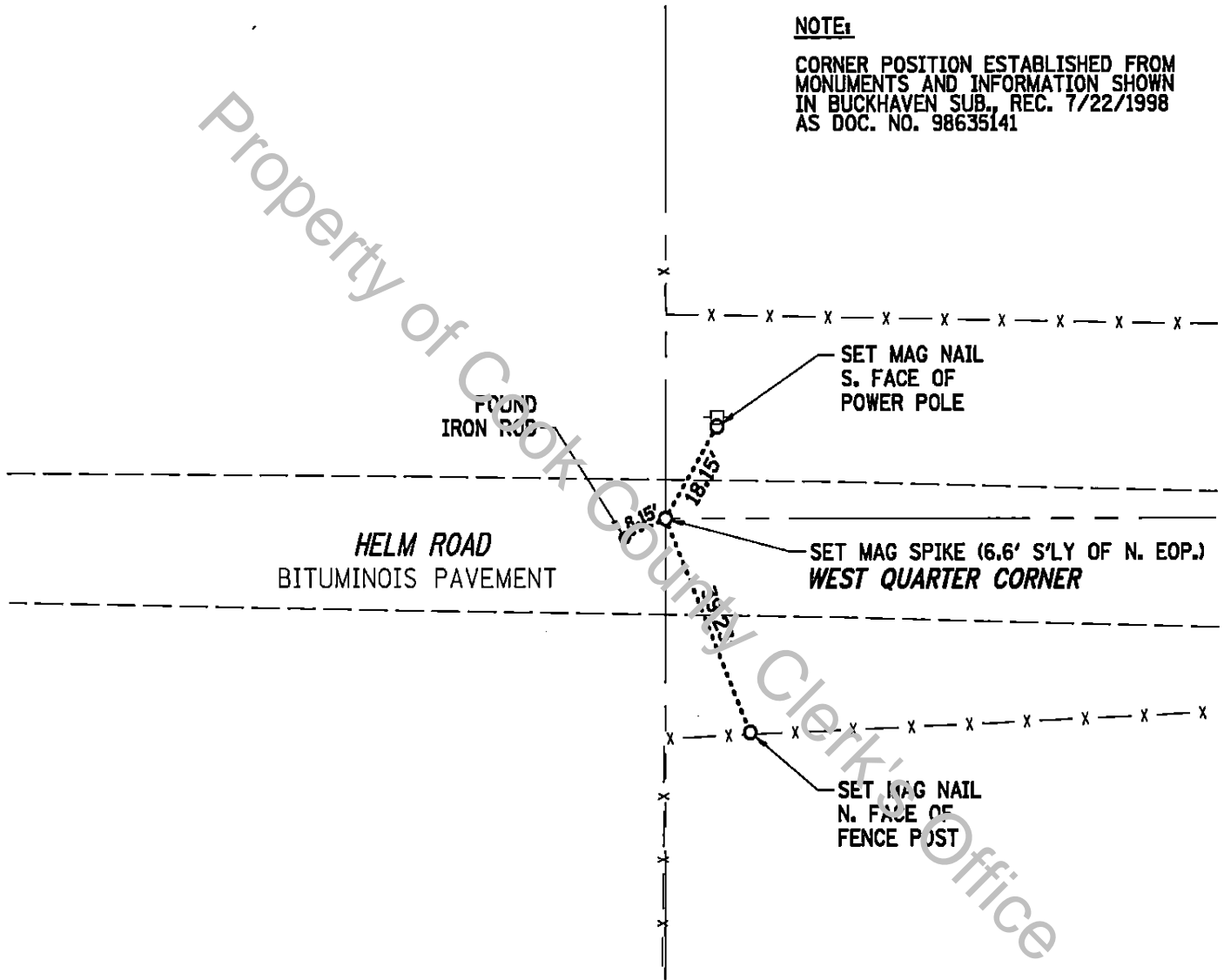
RECOVERY TIE DRAWING
(NOT TO SCALE)



NOTE:

CORNER POSITION ESTABLISHED FROM
MONUMENTS AND INFORMATION SHOWN
IN BUCKHAVEN SUB., REC. 7/22/1998
AS DOC. NO. 98635141

Property of Cook County Clerk's Office



MONUMENT DESCRIPTION AND REMARKS:
NAD 83 (2007) IL STATE PLANE EAST ZONE
SET MAG SPIKE
N 1990816.584
E 1010022.682

PRIOR COOK CO. DOCUMENTS:
23853667

RETURN/MAIL TO:



AMERICAN

SURVEYING & ENGINEERING, LTD.
ILLINOIS PROFESSIONAL DESIGN FIRM NO. 184-003192
200 N. LaSalle St. Suite 2630, Chicago, IL 60601
312-277-2000 www.americansurvey.com

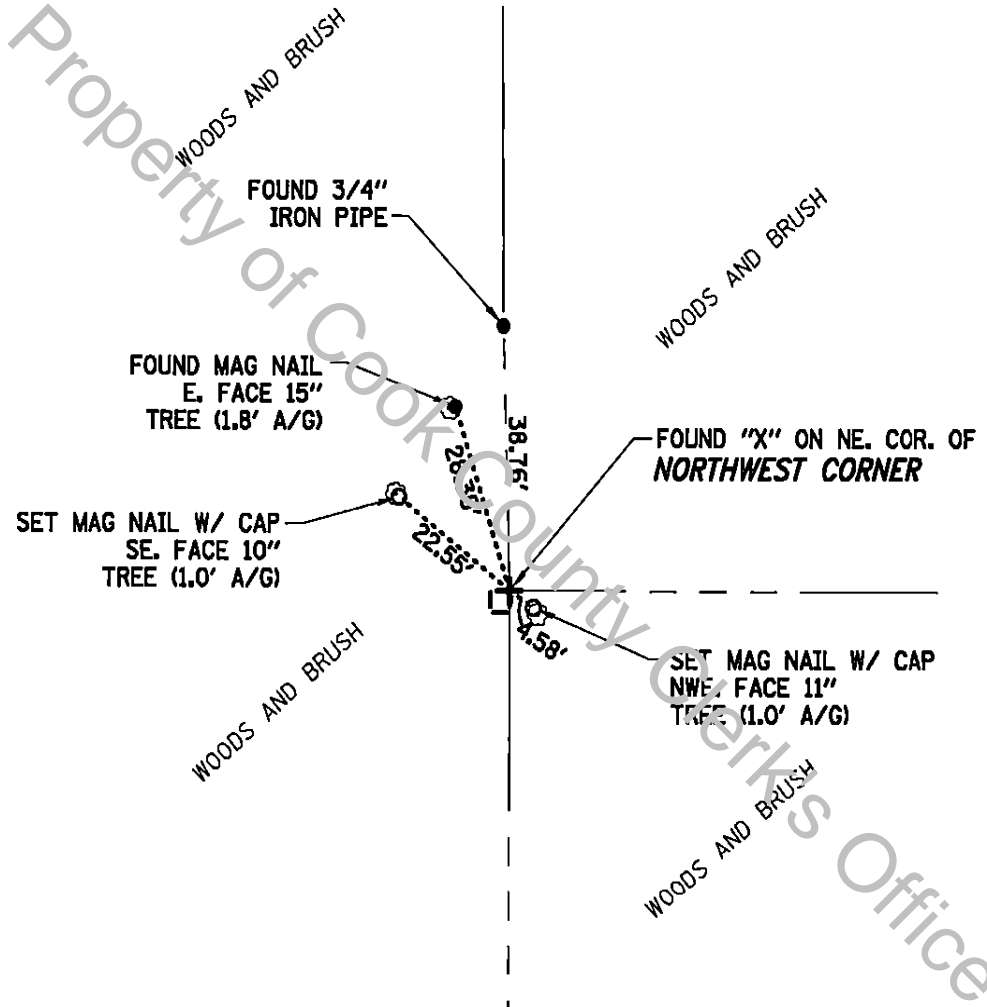
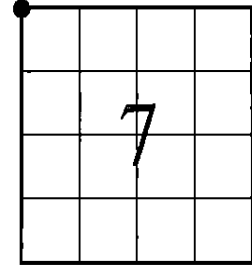
SHEET 2 OF 3

UNOFFICIAL COPY

"MONUMENT RECORD"

OF
LAND SURVEY MONUMENTS
SITUATED IN SECTION 7
TOWNSHIP 42 NORTH
RANGE 9 EAST, 3RD P.M.
COOK COUNTY, IL

RECOVERY TIE DRAWING
(NOT TO SCALE)



MONUMENT DESCRIPTION AND REMARKS:

NAD 83 (2007) IL STATE PLANE EAST ZONE
FOUND "X" ON NE. COR. OF 12" x 15" STONE
N 1993469.961
E 1010025.451

NO PRIOR DOCUMENTS IN COOK OR
KANE COUNTY

RETURN/MAIL TO:



AMERICAN

SURVEYING & ENGINEERING, LTD.
ILLINOIS PROFESSIONAL DESIGN FIRM NO. 184-003192
200 N. LaSalle St. Suite 2630, Chicago, IL 60601
312-277-2000 www.americansurvey.com