

UNOFFICIAL COPY

PLAT DOCUMENT

86054425



TENTH AMENDMENT TO DECLARATION OF CONDOMINIUM OWNERSHIP  
OF THE FOX RUN MANOR HOMES CONDOMINIUM

THIS AMENDMENT made and entered into this 1st day of January, 1986, by CENTEX HOMES ENTERPRISES, INC., Illinois Division, f/k/a Centex Homes Corporation, a Nevada corporation (hereinafter referred to as the "Declarant").

W I T N E S S E T H :

WHEREAS, by a Declaration of Condominium Ownership of The Fox Run Manor Homes Condominium (the "Declaration") recorded in the Office of the Recorder of Deeds of Cook County, Illinois as Document No. 27469146, the Declarant submitted certain real estate situated in the County of Cook, State of Illinois, to the provisions of the Illinois Condominium Property Act (the "Act"); and

WHEREAS, the Declarant therein reserved the right to annex and add all or any portion of the Add-On Property (as defined in the Declaration) to the Parcel (as defined in the Declaration) and the Condominium created by the Declaration; and

WHEREAS, the Declarant has annexed and added to the Parcel, as a First Amendment to Declaration recorded in the Office of the Recorder of Deeds of Cook County, Illinois on March 19, 1985 as Document No. 27479676 (the "First Amendment") wherein the Declarant submitted to the provisions of the Act and the Declaration, that certain real estate legally described in Exhibit "1A" to the Amendment; and

WHEREAS, the Declarant has annexed and added to the Parcel, as a Second Amendment to Declaration recorded in the Office of the Recorder of Deeds of Cook County, Illinois on March 21, 1985 as Document No. 27483305 (the "Second Amendment") wherein the Declarant submitted to the provisions of the Act and the Declaration, that certain real estate legally described in Exhibit "2A" to the Amendment; and

WHEREAS, the Declarant has annexed and added to the Parcel, as a Third Amendment to Declaration recorded in the Office of the Recorder of Deeds of Cook County, Illinois on May 7, 1985 as Document No. 85010668 (the "Third Amendment") wherein the Declarant submitted to the provisions of the Act and the Declaration, that certain real estate legally described in Exhibit "3A" to the Amendment; and

WHEREAS, the Declarant has annexed and added to the Parcel, as a Fourth Amendment to Declaration recorded in the Office of the Recorder of Deeds of Cook County, Illinois on June 14, 1985 as Document No. 85061027 (the "Fourth Amendment") wherein the Declarant submitted to the provisions of the Act and the Declaration, that certain real estate legally described in Exhibit "4A" to the Amendment; and

WHEREAS, the Declarant has annexed and added to the Parcel, as a Fifth Amendment to Declaration recorded in the Office of the Recorder of Deeds of Cook County, Illinois on June 21, 1985 as Document No. 85070783 (the "Fifth Amendment") wherein the Declarant submitted to the provisions of the Act and the Declaration, that certain real estate legally described in Exhibit "5A" to the Amendment; and

WHEREAS, the Declarant has annexed and added to the Parcel, as a Sixth Amendment to Declaration recorded in the Office of the Recorder of Deeds of Cook County, Illinois on August 21, 1985 as Document No. 85156499 (the "Sixth Amendment") wherein the Declarant submitted to the provisions of the Act and the Declaration, that certain real estate legally described in Exhibit "6A" to the Amendment; and

WHEREAS, the Declarant has annexed and added to the Parcel, as a Seventh Amendment to Declaration recorded in the Office of the Recorder of Deeds of Cook County, Illinois on September 10, 1985 as Document No. 85182424 (the "Seventh Amendment") wherein the Declarant submitted to the provisions of the Act and the Declaration, that certain real estate legally described in Exhibit "7A" to the Amendment; and

WHEREAS, the Declarant has annexed and added to the Parcel, as an Eighth Amendment to Declaration recorded in the Office of the Recorder of Deeds of Cook County, Illinois on October 7, 1985 as Document No. 85224032 (the "Eighth Amendment") wherein the Declarant submitted to the provisions of the Act and the Declaration, that certain real estate legally described in Exhibit "8A" to the Amendment; and

WHEREAS, the Declarant has annexed and added to the Parcel, as a Ninth Amendment to Declaration recorded in the Office of the Recorder of Deeds of Cook County,

86054425

Return to Box 307  
attn J. King

# UNOFFICIAL COPY

Illinois on November 5, 1985 as Document No. 85269562 (the "Ninth Amendment") wherein the Declarant submitted to the provisions of the Act and the Declaration, that certain real estate legally described in Exhibit "9A" to the Amendment; and

WHEREAS, the Declarant now desires to so annex and add to the parcel and submit to the provisions of the Act and the Declaration certain real estate (the "Tenth Additional Parcel"), described on Exhibit "10A" attached hereto, which Tenth Additional Parcel is a portion of said Add-On Property.

NOW, THEREFORE, the Declarant does hereby amend the Declaration as follows:

1. The Tenth Additional Parcel is hereby annexed to the Parcel, as defined in the Declaration, and is hereby submitted to the provisions of the Act as a part of the Condominium in accordance with, and shall be deemed to be governed in all respects by, the terms and provisions of the Declaration.

2. The Declaration, as heretofore amended, is hereby amended by deleting Exhibit "9A" of the Declaration and substituting therefor Exhibit "10A" which is attached hereto.

3. Exhibit "B" of the Declaration, as heretofore amended, is hereby amended by (a) substituting page 1 attached hereto for that page 1 which was previously recorded as page 1 of Exhibit "B" and (b) adding pages 27, 28 and 29 which are attached hereto.

4. The Declaration, as heretofore amended, is hereby amended by deleting Exhibit "9C" of the Declaration and substituting therefor Exhibit "10C" which is attached hereto.

5. The Additional Common Elements annexed by this instrument are hereby granted and conveyed to the grantees of all Units of The Fox Run Manor Homes Condominium, including the grantees of Units heretofore conveyed, all as set forth in the Declaration.

6. Except as expressly set forth herein, the Declaration shall remain in full force and effect in accordance with its terms.

Permanent Real Estate Index No. 07-26-200-005

Property Address:

Building 6:

1862 Fox Run Drive, Units A, B, C & D  
Elk Grove Village, Illinois 60007

1860 Fox Run Drive, Units A, B, C & D  
Elk Grove Village, Illinois 60007

Building 21:

1851 Fox Run Drive, Units A, B, C & D  
Elk Grove Village, Illinois 60007

1861 Fox Run Drive, Units A, B, C & D  
Elk Grove Village, Illinois 60007

# UNOFFICIAL COPY

IN WITNESS WHEREOF, the Declarant has caused its corporate seal to be affixed hereto and has caused its name to be signed to these presents by its President, Illinois Division, and attested by its Assistant Secretary, Illinois Division, and the Declarant has hereto set its hand seal, as of the day and year written above.

CENTEX HOMES ENTERPRISES, INC., ILLINOIS  
DIVISION, a Nevada corporation

BY: *Gerald R. Harker*  
Gerald R. Harker, President,

ATTEST:

*James R. Duerr*  
James R. Duerr, Assistant Secretary,  
CENTEX HOMES ENTERPRISES, INC.,  
ILLINOIS DIVISION

STATE OF ILLINOIS )

COUNTY OF COOK )

SS.

I, the undersigned, a Notary Public in and for said County, in the State aforesaid, DO HEREBY CERTIFY that Gerald R. Harker, personally known to me to be the President of CENTEX HOMES ENTERPRISES, INC., ILLINOIS DIVISION, a Nevada corporation, and James R. Duerr, personally known to me to be the Assistant Secretary of said corporation, and personally known to me to be the same persons whose names are subscribed to the foregoing instrument, appeared before me this day in person and severally acknowledged that as such President and Assistant Secretary, they signed, sealed and delivered the said instrument as President and Assistant Secretary of said corporation, and caused the corporate seal of said corporation to be affixed thereto, pursuant to authority, given by the Board of Directors of said corporation as their free and voluntary act, and as the free and voluntary act and deed of said corporation, for the uses and purposes therein set forth.

Given under my hand and official seal, this 31st day of January, 1986:

*Shelby S. Boblick*  
Notary Public

My Commission Expires:

11/09/89

THIS INSTRUMENT PREPARED BY:

Shelby S. Boblick  
McDermott, Will & Emery  
111 West Monroe Street  
Chicago, Illinois 60603  
(312) 372-2000

AFTER RECORDING RETURN TO:

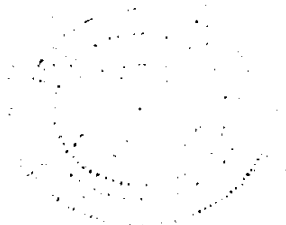
Shelby S. Boblick  
McDermott, Will & Emery  
111 West Monroe Street  
Chicago, Illinois 60603

86054125

UNOFFICIAL COPY



Property of Cook County Clerk's Office



11/11/2024

# UNOFFICIAL COPY

EXHIBIT "10A"

ORIGINAL PARCEL, PLUS FIRST ADDITION, SECOND ADDITION, THIRD ADDITION, FOURTH ADDITION, FIFTH ADDITION, SIXTH ADDITION, SEVENTH ADDITION, EIGHTH ADDITION, NINTH ADDITION, AND TENTH ADDITION TO PARCEL

That part of the Northeast 1/4 of Section 26, Township 41 North, Range 10 East of the Third Principal Meridian, described as follows:

Commencing at the center of said Section 26; thence N. 00° 11' 44" W., along the West line of the Northeast 1/4 of said Section 26, a distance of 1769.47 feet to the POINT OF BEGINNING; thence N. 00° 11' 44" W., continuing along said West line, a distance of 910 feet; thence N. 86° 22' 12" E., a distance of 474.49 feet; thence S. 30° 04' 34" W., a distance of 145.90 feet; thence 14.50 feet along the arc of a curve to the right, having a radius of 145 feet, the chord bearing S. 57° 03' 35" E., a distance of 14.49 feet to a point of tangency; thence S. 54° 11' 44" E., a distance of 100 feet; thence S. 35° 48' 16" W., a distance of 50 feet; thence 47.78 feet along the arc of a curve to the left, having a radius of 126.57 feet, the chord bearing S. 65° 00' 39" E., a distance of 47.50 feet; thence S. 03° 37' 48" E., a distance of 43.89 feet; thence S. 89° 48' 16" W., a distance of 150.59 feet; thence S. 00° 11' 44" E., a distance of 172.87 feet; thence S. 81° 20' 52" W., a distance of 170.29 feet; thence S. 08° 39' 08" E., a distance of 55.81 feet; thence S. 82° 51' 03" W., a distance of 149.64 feet; thence S. 00° 11' 44" E., a distance of 370 feet to the North R.O.W. line of University Lane; thence N. 89° 48' 16" E., along said North R.O.W. line, a distance of 160 feet to a point of curvature; thence still along said line, 50.04 feet along the arc of a curve to the right, having a radius of 708.66 feet, the chord bearing S. 28° 10' 21" E., a distance of 50.03 feet; thence N. 00° 11' 44" W., a distance of 18.60 feet to a point of curvature; thence 51.66 feet along the arc of a curve to the left, having a radius of 350 feet to a point of tangency; thence N. 08° 39' 08" W., a distance of 27.53 feet; thence N. 89° 48' 16" E., a distance of 228.02 feet; thence N. 24° 03' 24" E., a distance of 46.80 feet; thence N. 68° 51' 26" E., a distance of 34.92 feet to a point on a curve; thence 24.74 feet along the arc of a curve to the left, having a radius of 130 feet, the chord bearing S. 63° 40' 32" E., a distance of 24.71 feet to a point of tangency; thence S. 69° 07' 41" E., a distance of 57.15 feet; thence N. 20° 52' 19" E., a distance of 92.34 feet to a point of curvature; thence 70.90 feet along the arc of a curve to the right, having a radius of 450 feet to a point of tangency; thence W. 29° 53' 56" E., a distance of 28.02 feet; thence W. 60° 06' 06" W., a distance of 90 feet; thence N. 20° 49' 11" E., a distance of 107.91 feet; thence W. 14° 18' 18" E., a distance of 156.66 feet; thence S. 86° 07' 33" W., a distance of 122.63 feet; thence N. 03° 37' 48" W., a distance of 149.11 feet; thence N. 86° 22' 12" E., a distance of 39.45 feet; thence N. 03° 37' 48" W., a distance of 97 feet; thence W. 86° 22' 12" E., a distance of 318.35 feet; thence S. 49° 37' 48" E., a distance of 197 feet; thence S. 44° 22' 12" W., a distance of 125 feet; thence S. 14° 18' 18" W., a distance of 294.74 feet; thence S. 29° 53' 56" W., a distance of 184.56 feet; thence S. 17° 13' 32" W., a distance of 121.27 feet; thence N. 69° 07' 41" W., a distance of 108.51 feet; thence S. 20° 52' 19" W., a distance of 8.47 feet to a point of curvature; thence 19.87 feet along the arc of a curve to the right, having a radius of 125 feet to a point of tangency; thence S. 29° 58' 46" W., a distance of 100.04 feet to a point of curvature; thence 17.14 feet along the arc of a curve to the left, having a radius of 75 feet to a point of tangency; thence S. 16° 53' 00" W., a distance of 53.34 feet to the North R.O.W. line of University Lane; thence the following three (3) courses and distances along the North R.O.W. line of University Lane: 1) N. 73° 07' 00" W., a distance of 158.52 feet to a point of curvature; thence 2) 211.24 feet along the arc of a curve to the left, having a radius of 708.66 feet to a point of tangency; thence 3) S. 89° 48' 16" W., a distance of 210 feet to the POINT OF BEGINNING; excepting therefrom those portions of Fox Run Drive and Plum Grove Road, herein included, but previously dedicated, containing 8.435 acres, more or less, all in Cook County, Illinois.

86054425

# UNOFFICIAL COPY

EXHIBIT "10C"

3 8 8 3 4 2 5

## PERCENTAGE OF UNIT OWNERSHIP IN COMMON ELEMENTS

UNIT #	% OF OWNERSHIP	UNIT #	% OF OWNERSHIP
16/1	.7916143	1	.8377667
16/1	.6417800	1	.9079987
16/1	.6813249	1	.7414486
16/1	.6873697	1	.7615149
16/1	.6471040	1	.8517346
16/1	.6471040	1	.9014788
16/1	.7916143	1	.7514818
16/1	.7916143	1	.6812498
16/1	.6971877	1	.7013161
16/1	.7119372	1	.6116806
16/1	.7173344	1	.8511813
16/1	.6677444	1	.8919457
16/1	.6677444	1	.9622177
16/1	.7611914	1	.7815812
16/1	.8217137	1	.8016474
16/1	.7811581	1	.7514818
16/1	.8571316	1	.7514818
16/1	.6773366	1	.8618462
16/1	.6270709	1	.9120111
16/1	.6371040	1	.8778999
16/1	.7219822	1	.9481331
16/1	.7811581	1	.7615149
16/1	.8016474	1	.7815812
16/1	.8618462	1	.7113449
16/1	.7811581	1	.7314155
16/1	.7811581	1	.8477999
16/1	.7113449	1	.8979665
16/1	.7113449	1	.8116806
16/1	.7113449	1	.8814911
16/1	.8116806	1	.7113449
16/1	.8217137	1	.7514818
16/1	.8919457	1	.6712216
16/1	.7219822	1	.6911280
16/1	.7414486	1	.8711744
16/1	.6712216	1	.8811911
16/1	.6911280	1	.8811911
16/1	.6712216	1	.9901197
16/1	.6911280	1	.7514818
16/1	.6471040	1	.6812449
16/1	.6471040	1	.7013161
16/1	.6471040	1	.8217137
16/1	.6471040	1	.8711744
16/1	.7113449	1	.8417800
16/1	.7113449	1	.9222045
16/1	.7113449	1	.7414486
16/1	.7113449	1	.7615149
16/1	.7113449	1	.6812449
16/1	.7113449	1	.7013161
16/1	.7113449	1	.8317446
16/1	.7113449	1	.9019788
16/1	.7113449	1	.8668811
16/1	.7113449	1	.9971815
16/1	.7113449	1	.7666395
16/1	.7113449	1	.7966395
16/1	.7113449	1	.7163446
16/1	.7113449	1	.7364446
16/1	.7113449	1	.8568811
16/1	.7113449	1	.9570709
16/1	.7113449	1	100.0000

*8301  
6 copies*

SEPT-91 RECORDING  
FALL 1991 TRSN 8556 92/96/85 14:15:00  
\$315 = R \*-56-054425

86054425