



RESOLUTION NO. 86-42

A Resolution Approving the Final Plat of Polo Run Unit II Subdivision

WHEREAS, Pulte Corporation and the First Bank of Oak Park, not personally, but as Trustee under Trust Agreement dated February 14, 1975 and known as Trust 1044 as owners of the land legally described below has submitted a final plat known as Polo Run Unit II Subdivision as prepared by Russell S. Bodwell, Illinois Registered Land Surveyor No. 35-1902 on February 10, 1986:

That part of the Southeast 1/4 of Section 15, Township 42 North, Range 11, East of the Third Principal Meridian, described as follows:

Commencing at the East 1/4 corner of said Section 15; thence S. 00 degrees 00 minutes 00 seconds E., along the East line of the Southeast 1/4 of said Section 15 a distance of 330.43 feet to a point on the North line of the South 3/4 of the North 1/2 of the Southeast 1/4 of said Section 15; thence continuing S. 00 degrees 00 minutes 00 seconds E., along the east line a distance of 818.31 feet; thence N. 89 degrees 57 minutes 52 seconds W., and along the south line of final plat of Subdivision of Polo Run Unit I, being a subdivision of part of the Southeast 1/4 of Section 15, Township 42 North, Range 11, East of the Third Principal Meridian recorded on January 28, 1986 as Document No. 86-037720 in Cook County, Illinois, a distance of 1005.00 feet to the point of beginning, said point also being the southwest corner of final plat of subdivision for Polo Run Unit I, being a subdivision of part of the southeast 1/4 of Section 15, Township 42 North, Range 11, East of the Third Principal Meridian, recorded on January 28, 1986 as Document No. 86-037720 in Cook County, Illinois; thence continuing N. 89 degrees 57 minutes 52 seconds W., a distance of 1343.59 feet; thence; S. 68 degrees 50 minutes 24 seconds W., a distance of 252.10 feet to the east right-of-way line of Elmhurst Road; thence N. 00 degrees 15 minutes 24 seconds W., along the east right-of-way line of Elmhurst Road a distance of 906.93 feet to the north line of the south 3/4 of the North One Half of the South East 1/4 of said Section 15; thence S. 89 degrees 58 minutes 35 seconds E., along the north line of the south 3/4 of the North 1/2 of the southeast 1/4 of said Section 15 a distance of 1887.75 feet to the northwest corner of final plat of subdivision for Polo Run Unit I, being a subdivision of part of the southeast 1/4 of Section 15, Township 42 North, Range 11, East of the Third Principal Meridian recorded on January 28, 1986 as Document No. 86-037720 in Cook County, Illinois; thence the following two (2) courses along the west line of final plat of subdivision for Polo Run Unit I, being a subdivision of part of the southeast 1/4 of Section 15, Township 42 North, Range 11, East of the Third Principal Meridian recorded on January 28, 1986 as Document No. 86-037720 in Cook County, Illinois (1) S. 00 degrees 00 minutes 00 seconds E., a distance of 592.26 feet; thence (11) S. 25 degrees 08 minutes 07 seconds W., a distance of 247.20 feet, to the point of beginning.

(The above-described property consists of 31.557 acres, more or less and is located 1/4 mile north of Palatine Road between Wheeling and Elmhurst Roads, Wheeling, Illinois.)

86110531

86110531

UNOFFICIAL COPY

Property of Cook County Clerk's Office

and

WHEREAS, the Plan Commission of the Village of Wheeling has reviewed the final plat of Polo Run Unit II and found the plat to be in conformance with the requirements of Title 17, Planning, Subdivisions and Planned Developments, and has recommended approval to the President and Board of Trustees;

NOW, THEREFORE, BE IT RESOLVED BY THE PRESIDENT AND BOARD OF TRUSTEES OF THE VILLAGE OF WHEELING, COUNTIES OF COOK AND LAKE, STATE OF ILLINOIS, that approval is hereby granted for the final plat of Polo Run Unit II, as prepared by Russell S. Bodwell, Illinois Registered Surveyor No. 35-1902 on February 10, 1986, attached hereto and made part of.

BE IT FURTHER RESOLVED, that the Village President is hereby directed to sign the final plat of Polo Run Unit II and the Clerk is directed to affix her signature and seal of the Village thereto, and that the final plat of Polo Run Unit II be recorded on behalf of the Village in the Cook County Recorder's Office forthwith.

Trustee ALTIERI moved, seconded by Trustee HARTMAN, that Resolution No. 86- 42 be adopted.

Trustee Altieri AYE Trustee Ratajczak AYE
Trustee Fanella AYE Trustee Rogers AYE
Trustee Hartman AYE Trustee Whittington AYE

ADOPTED this 17th day of MARCH, 1986, by the President and Board of Trustees of the Village of Wheeling, Illinois.

Sheila H. Schultz
Sheila H. Schultz, Village President

ATTEST:
Janet M. D'Argo
Janet M. D'Argo, Village Clerk

86110531
66110531
183
6 COPIES
MW

DEPT-01 RECORDING \$183.00
#0034 # 2 * 86-110531
T#1111 TRAN 5178 03/21/86 11:31:00

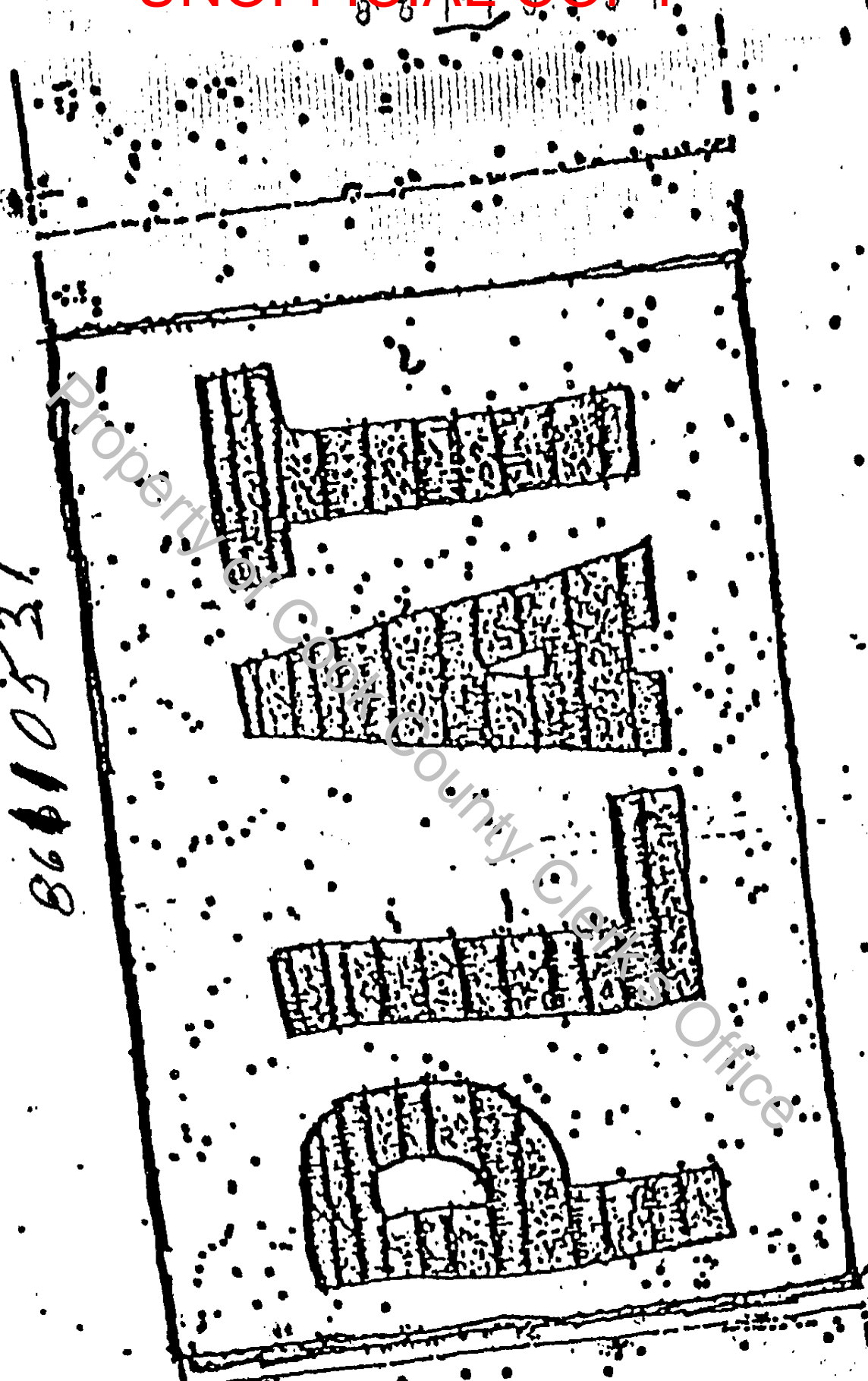
UNOFFICIAL COPY

Property of Cook County Clerk's Office

UNOFFICIAL COPY

3/21/86

8610531



Property
County Clerk
Office