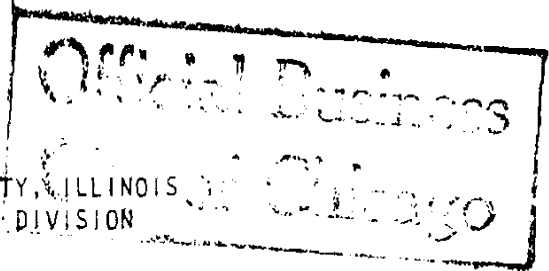


UNOFFICIAL COPY

LIS PENDENS NOTICE

IN THE CIRCUIT COURT OF COOK COUNTY, ILLINOIS
COUNTY DEPARTMENT - CHANCERY DIVISION



87M1-406116

CITY OF CHICAGO
A MUNICIPAL CORPORATION
PLAINTIFF

NO.

VS

ALMA PITTMAN (O) ET AL

1.60

Defendant(s)

*** REFER TO ATTACHED ADDENDUM OF DEFENDANTS ***

I, the undersigned, do hereby certify that the above entitled cause was filed in the above court on the SEP - 1 1987 day of _____ for _____

and is now pending in said court and that the property affected by said cause is located at the following address :

1211 1211 S INDEPENDENCE B V

and described as follows:

*** REFER TO ATTACHED ADDENDUM ***

JUDSON H. MINER
CORPORATION COUNSEL
CITY OF CHICAGO

BY: *Alma Pittman*

ASSISTANT CORPORATION COUNSEL
180 N. LaSalle St. Suite 501
Chicago, Illinois 60602

or

Deposit in box no. _____

Recorders Office

COOK COUNTY CLERK'S OFFICE
FILED FOR RECORDS

1987 SEP 16 AM 9:12

87505536

87505536

FILED
1987 SEP -4 AM 10:04
Cook County Clerk's Office

UNOFFICIAL COPY

Property of Cook County Clerk's Office

UNOFFICIAL COPY

IN THE CIRCUIT COURT OF COOK COUNTY, ILLINOIS
MUNICIPAL DEPARTMENT-FIRST DISTRICT
LISTING OF DEFENDANTS

RE: 1211 1211 S INDEPENDENCE B
V

ALMA PITTMAN (O)
4105 W GRENSHAW
CHGO IL 60624

ALMA V. PITTMAN (X)
4105 W GRENSHAW
CHGO IL 60624

Property of Cook County Clerk's Office

87505530

UNOFFICIAL COPY

IN THE CIRCUIT COURT OF COOK COUNTY, ILLINOIS
MUNICIPAL DEPARTMENT-FIRST DISTRICT

* * * LEGAL DESCRIPTION * * * FRONT

RE: 1211 1211 S INDEPENDENCE B V
PI# 16-23-104-003 *TP DAD*

LOT 5 IN BLOCK 1 IN VANCE AND PHILLIPS BOULEVARD ADDITION IN THE NW 1/4 OF
SECTION 23, TOWNSHIP 39 NORTH, RANGE 13
LYING EAST OF THE 3RD PRINCIPAL MERIDIAN
IN COOK COUNTY ILLINOIS

Property of Cook County Clerk's Office

87505536