

# UNOFFICIAL COPY

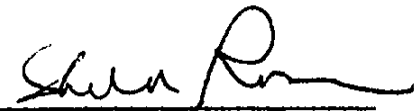
8 8 4 6 1 4 3 5

88461435

Affidavit as to  
Consent to Plat of  
Resubdivision

I, Sheldon Rosing first duly sworn on oath state that I am the Record Owner as to the legally described property which is attached. Such property was resubdivided and the plat of resubdivision was recorded as document number 88403084. My signature did not appear on the plat and I hereby sign this affidavit for purposes of consenting to the resubdivision.

88461435



Sheldon Rosing

State of Illinois  
County of Cook;  
Sign and Sworn  
to before me this  
19th, September 1988

  
Notary Public

DEPT-01 \$12.25  
T#4444 TRON 2765 10/06/00 13:53:00  
#9385 # D \* 88-461435  
COOK COUNTY RECORDER



Mail to: Sheldon Rosing  
120 W. Madison St.  
Suite 918  
Chicago, IL 60602



Unit X

① 51179730 ②

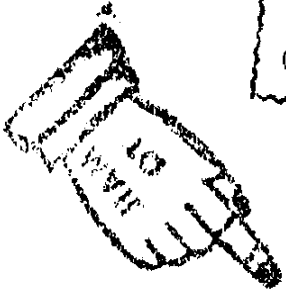
# UNOFFICIAL COPY

28101132

Property of Cook County Clerk's Office

*[Signature]*  
Notary Public

NOTARY PUBLIC  
Laura Griffin  
Notary Public, State of Illinois  
My Commission Expires 12/31/20



MAIL 00 15

88461435

88403084

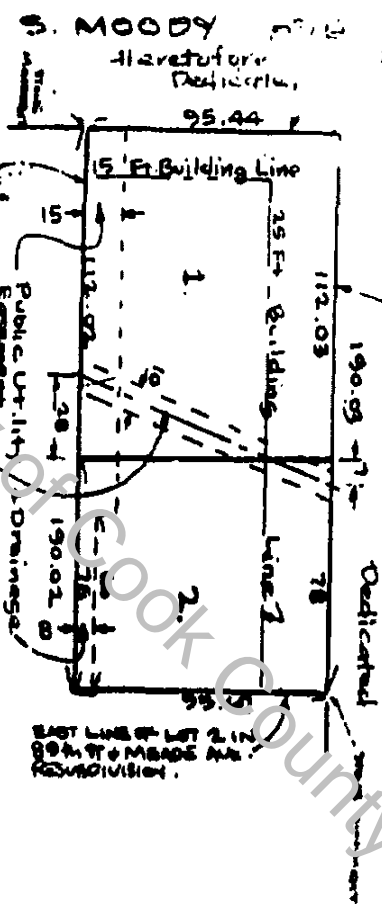
# GRAPENTHIN'S RESUBDIVISION

OF LOTS 1 AND 2 IN CRAIG HAYDEN SWISTOJICZ, 89th ST. + MEADE AVE. RESUBDIVISION OF LOT 33 IN FREDERICK BARTLETT'S 87th ST. ACRES, A SUBDIVISION OF THE EAST 1/2 OF THE NORTHWEST 1/4 OF SECTION 5, TOWNSHIP 37 NORTH, RANGE 13 EAST OF THE THIRD PRINCIPAL MERIDIAN (EXCEPT THE EAST 5 ACRES THEREOF), IN COOK COUNTY, ILLINOIS

88403081

SEP 2 1988  
 NORTH LINE OF LOTS 1 & 2 IN 89th ST + MEADE AVE. RESUBDIVISION

W. 89th ST.  
 Hereafter Dedicated



Property of Cook County Clerk

STATE OF ILLINOIS  
 COUNTY OF COOK  
 GRAPENTHIN'S RESUBDIVISION  
 OF LOTS 1 AND 2 IN CRAIG HAYDEN SWISTOJICZ, 89th ST. + MEADE AVE. RESUBDIVISION OF LOT 33 IN FREDERICK BARTLETT'S 87th ST. ACRES, A SUBDIVISION OF THE EAST 1/2 OF THE NORTHWEST 1/4 OF SECTION 5, TOWNSHIP 37 NORTH, RANGE 13 EAST OF THE THIRD PRINCIPAL MERIDIAN (EXCEPT THE EAST 5 ACRES THEREOF), IN COOK COUNTY, ILLINOIS

BY: \_\_\_\_\_ OF: \_\_\_\_\_ A.D. 1988

STATE OF ILLINOIS  
 COUNTY OF COOK  
 I, \_\_\_\_\_, Clerk of Cook County, do hereby certify that the above and hereunto annexed plat of resubdivision is correct and true in accordance with the original plat thereof on file and to a true and correct copy thereof as the same appears on the original plat of resubdivision filed in the office of the Clerk of Cook County, Illinois, on the \_\_\_\_\_ day of \_\_\_\_\_, 1988.

NOTE: NEARLY ALL INFORMATION HEREON IS BASED ON THE ORIGINAL PLAT OF RESUBDIVISION FILED IN THE OFFICE OF THE CLERK OF COOK COUNTY, ILLINOIS, ON SEPTEMBER 2, 1988.

UNOFFICIAL COPY

Property of Cook County Clerk's Office

20101432

RECORDED

INDEXED