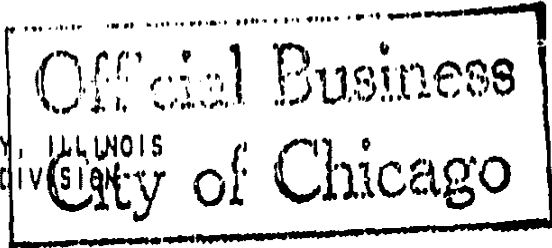


# UNOFFICIAL COPY

89094532

LIS PENDENS NOTICE

IN THE CIRCUIT COURT OF COOK COUNTY, ILLINOIS  
COUNTY DEPARTMENT - CHANCERY DIVISION



CITY OF CHICAGO  
A MUNICIPAL CORPORATION  
PLAINTIFF

\$1.60

89M1-400599  
NO.

VS

PERO VASILJ (L) ET AL

Defendant(s)

\*\*\* REFER TO ATTACHED ADDENDUM OF DEFENDANTS \*\*\*

I, the undersigned, do hereby certify that the above entitled cause was filed in the above court on the FEB 21 1989 day of \_\_\_\_\_ for \_\_\_\_\_

and is now pending in said court and that the property affected by said cause is located at the following address :

1625 1625 W GREENLEAF AV

and described as follows:

\*\*\* REFER TO ATTACHED ADDENDUM \*\*\*

JUDSON H. MINER  
CORPORATION COUNSEL  
CITY OF CHICAGO

BY: *M. [Signature]*

ASSISTANT CORPORATION COUNSEL  
180 N. LaSalle St. Suite 501  
Chicago, Illinois 60602

or

Deposit in box no. \_\_\_\_\_

Recorders Office

89094532

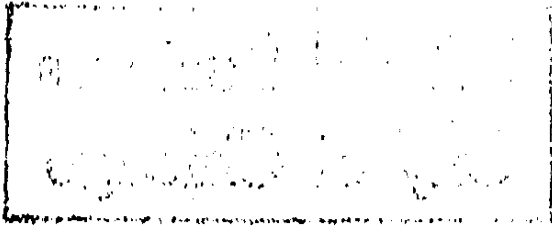
COOK COUNTY CLERK'S OFFICE  
188 N. WAB  
CHICAGO, ILLINOIS 60601

RECEIVED  
FEB 21 2 10 PM '89  
CLERK'S OFFICE  
CHICAGO, ILLINOIS

89094532

UNOFFICIAL COPY

8800008

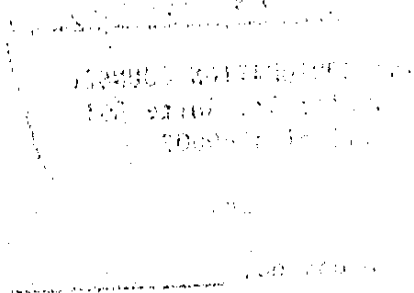


8800008-1M08

02.12

Property of Cook County Clerk's Office

8800008



# UNOFFICIAL COPY

IN THE CIRCUIT COURT OF COOK COUNTY, ILLINOIS  
MUNICIPAL DEPARTMENT-FIRST DISTRICT  
LISTING OF DEFENDANTS

RE: 1625 1625 W GREENLEAF AV

PERO VASILJ (L)  
2501 W FARWELL  
CHGO IL 60645

AMERICAN NATL BK (T)  
TR#58120  
8-15-83 DOC 25733494  
1 N LASALLE  
CHGO

AETNA BK (T)  
3-17-86 DOC 86104058  
2401 N HALSTED  
CHGO IL 60614

Property of Cook County Clerk's Office

89094532

# UNOFFICIAL COPY

State of Illinois  
County of Cook

Property of Cook County Clerk's Office

2000-1235

# UNOFFICIAL COPY

IN THE CIRCUIT COURT OF COOK COUNTY, ILLINOIS  
MUNICIPAL DEPARTMENT-FIRST DISTRICT

\* \* \* LEGAL DESCRIPTION \* \* \* FRONT

RE: 1625 1625 W GREENLEAF AV  
PI# 11-31-213-005

LOT 20 IN BLOCK 27 IN ROGERS PARK, BEING A SUBDN. IN THE NE1/4 AND THAT  
PART OF THE NW1/4 LYING E OF THE RIDGE ROAD OF SEC. 31 AND THE W1/2 OF  
NW1/4 OF SEC. 32-41-14, AND ALL OF SEC. 30 LYING S OF THE INDIAN BOUNDARY  
LINE IN COOK COUNTY, ILLINOIS.

SECTION , TOWNSHIP 40 NORTH, RANGE 14  
LYING EAST OF THE 3RD PRINCIPAL MERIDIAN  
IN COOK COUNTY ILLINOIS

Property of Cook County Clerk's Office

89094532

# UNOFFICIAL COPY

STATE OF ILLINOIS  
JUDICIAL BRANCH

2015

Case No. 15-00000

Page 1 of 1

STATE OF ILLINOIS  
JUDICIAL BRANCH  
CLERK OF COURT

2015

Case No. 15-00000

Property of Cook County Clerk's Office

88001235