

UNOFFICIAL COPY

9 1 6 9 0 2 7 1

91690278

PLANT

Property of Cook County Clerk's Office

12/30/91

UNOFFICIAL COPY

Property of Cook County Clerk's Office

UNOFFICIAL COPY



City of
Rolling Meadows

3600 KIRCHOFF ROAD
ROLLING MEADOWS, ILLINOIS 60008
PHONE: 708/394-8500
FAX: 708/394-8710

CARL E. COUVE, Mayor
MARYLYN C. KOCH, City Clerk

91690278

576⁰⁰
12-30-91
Km

State of Illinois)
County of Cook)

DEPT OF REC.
74444 TRAM 9379 12/30/91 15:40:00
#5431 # D *-91-690278
COOK COUNTY RECORDER

CERTIFICATION

I, Joanne Rybarczyk, do hereby certify that I am the duly appointed Deputy City Clerk of the City of Rolling Meadows, a municipal corporation in the County and State aforesaid, and as such Deputy City Clerk, I am the keeper of the records and files of the City Council of said City.

I do further certify that attached hereto is a full, true and correct copy of :
Ordinance No. 90-49

duly passed by the City Council at a legally convened meeting thereof held on the 28th day of August, 1990; approved by the Mayor on the 4th day of September, 1990; and published by the City Clerk on the 4th day of September, 1991; and at the time of adoption of said Ordinance No. 90-49, the City Council voted as follows:

YEAS: TAYLOR, MENZEL, WERLING, ROCK, BALL, COUVE
NAYS: 0
ABSENT: 0
PASSED: yes

91690278

all as appears in the official records of said City in my care and custody.

Given under my hand and the corporate seal of said City this 20th day of December, 1991.

S E A L

Joanne Rybarczyk

Jeanne Rybarczyk Deputy City Clerk

UNOFFICIAL COPY

Property of Cook County Clerk's Office

UNOFFICIAL COPY

ORDINANCE NO. 90-49

AN ORDINANCE ANNEXING CERTAIN TERRITORY
TO THE CITY OF ROLLING MEADOWS
1060 South Plum Grove Road

WHEREAS, a written petition, under oath, signed by all the owners of record of the land hereinafter described, has been filed with the City Clerk of the City of Rolling Meadows, requesting that said territory be annexed to the City of Rolling Meadows; and

WHEREAS, there are no electors residing on the territory; and

WHEREAS, the said territory is not within the corporate boundaries of any municipality but is contiguous to the City of Rolling Meadows; and

WHEREAS, notice upon the trustees of the Palatine Township Rural Fire Protection District and Palatine Library District have been served, as required by the Illinois Revised Statutes; and

WHEREAS, the Palatine Township Commissioner of Highways and the Palatine Township Board of Trustees have been notified, in writing, of the proposed annexation of township highways, as required by the Illinois Revised Statutes; and

WHEREAS, the City Council is of the opinion that the annexation of said territory is in the best interest of the City.

NOW, THEREFORE, BE IT ORDAINED BY THE CITY COUNCIL OF THE CITY OF ROLLING MEADOWS, COOK COUNTY, ILLINOIS:

SECTION ONE: The territory legally described in the attached Exhibit "A" is hereby annexed to the City of Rolling Meadows.

SECTION TWO: The Mayor of the City of Rolling Meadows is hereby directed to file in the Office of the Recorder of Deeds of Cook County, Illinois, a certified copy of this Ordinance together with a correct map of the territory annexed.

SECTION THREE: The City Attorney is hereby directed to file in the Office of the Recorder of Deeds of Cook County, Illinois, an affidavit that notice has been sent to all of the parties requiring notice of said annexation by the Illinois Revised Statutes.

SECTION FOUR: This Ordinance shall be in full force and effect from and after its passage, approval and publication as provided by law.

91690275

91690275

UNOFFICIAL COPY

Property of Cook County Clerk's Office

UNOFFICIAL COPY

ORDINANCE NO. 00-49
August 28th, 1990
Page Two

SECTION FIVE: This Ordinance shall be printed and published in pamphlet form by Order of the City Council of the City of Rolling Meadows.

YEAS: Taylor, Menzel, Werling, Rock, Ball, Couve

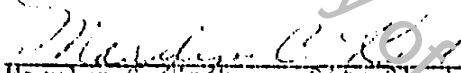
NAYS: 0

ABSENT: Jacobson

Passed this 28th day of August, 1990.

Approved this 4th day of September, 1990.

ATTEST:


Marilyn C. Koch
City Clerk


William D. Ahrens
Mayor

Published this 4th day of September, 1990.

Property of Cook County Clerk's Office

91690278

UNOFFICIAL COPY

Property of Cook County Clerk's Office

UNOFFICIAL COPY

9 1 6 9 0 2 7

LEGAL DESCRIPTION

Lot 5 in Block 22 in Arthur T. McIntosh and Company's Palatine Estates Unit Number 3, being a Subdivision of parts of Sections 26 and 27, Township 42 North, Range 10 East of the Third Principal Meridian, in Cook County, Illinois.

Property address:

1060 South Plum Grove Road
Palatine, IL 60067

EXHIBIT A

ORDINANCE NO. 90-49
August 28, 1990

91690275

UNOFFICIAL COPY

Property of Cook County Clerk's Office

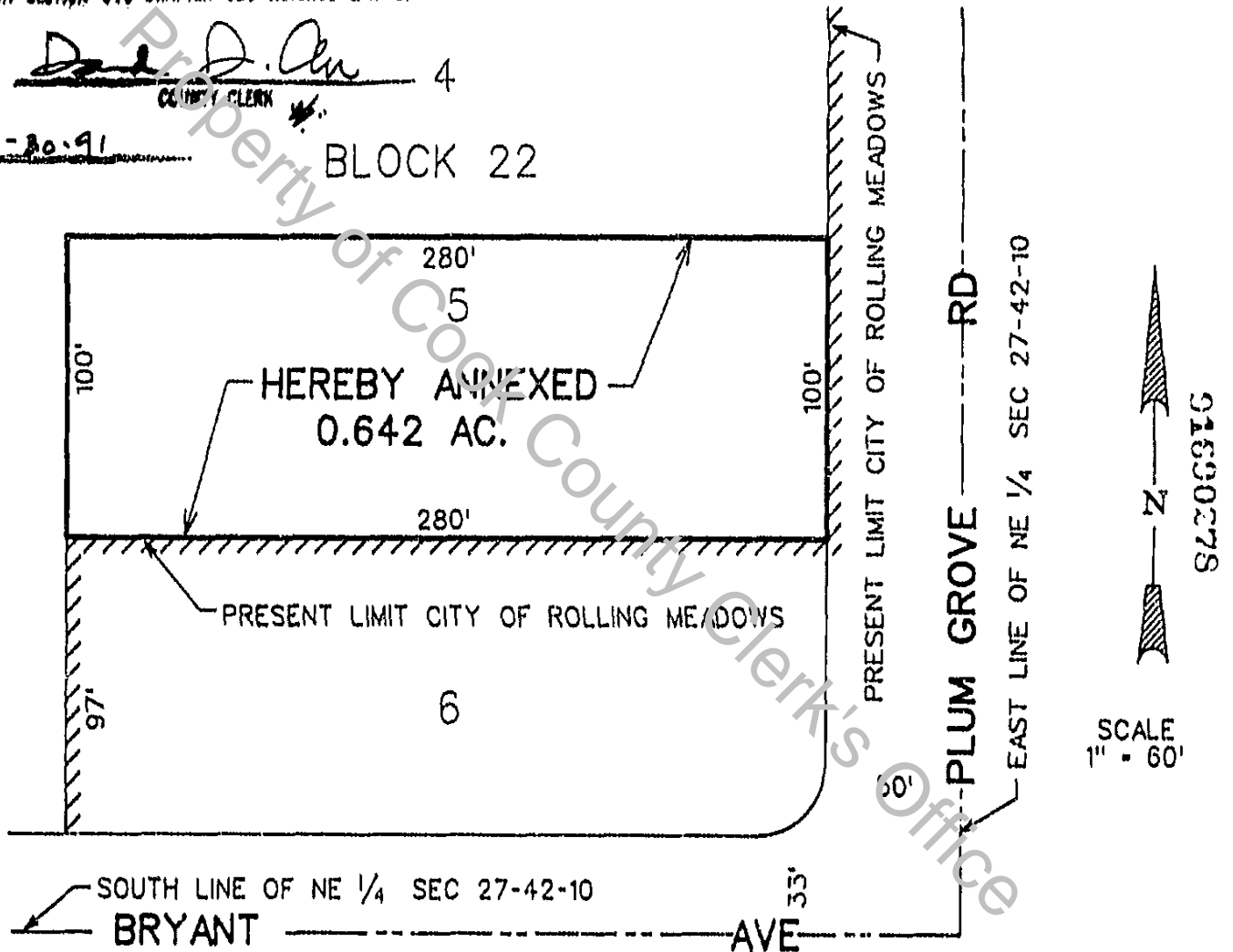
UNOFFICIAL COPY
PLAT OF ANNEXATION
 TO 91690278
CITY OF ROLLING MEADOWS

LOT 5 IN BLOCK 22 IN ARTHUR T. MC INTOSH AND COMPANY'S PALATINE ESTATES UNIT 3, BEING A SUBDIVISION OF PARTS OF SECTION 26 AND 27, TOWNSHIP 42 NORTH, RANGE 10 EAST OF THE THIRD PRINCIPAL MERIDIAN, IN COOK COUNTY, ILLINOIS.

THIS DOES NOT REQUIRE THE COUNTY CLERK'S ENDORSEMENT REQUIRED IN SECTION 516 CHAPTER 120 REVENUE LAW OF ILLINOIS.

D. J. Orr
 COUNTY CLERK 4

DATE 12-30-91 BLOCK 22



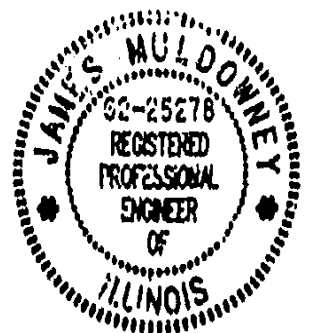
STATE OF ILLINOIS
 COUNTY OF COOK SS

FLETCHER ENGINEERING COMPANY HEREBY CERTIFIES THAT THE PLAT HEREON DRAWN HAS BEEN MADE UNDER ITS DIRECTION FROM PLATS OF RECORD AND IS A CORRECT REPRESENTATION OF SAME.

GIVEN UNDER MY SEAL AT ROLLING MEADOWS, ILLINOIS

12 th September, A.D. 1990

James M. Muldowney
 CITY ENGINEER CITY OF ROLLING MEADOWS
 REGISTERED PROFESSIONAL ENGINEER LICENSE NO. 25278



UNOFFICIAL COPY

PLAT OF ANNEXATION
TO
CITY OF ROLLING MEADOWS

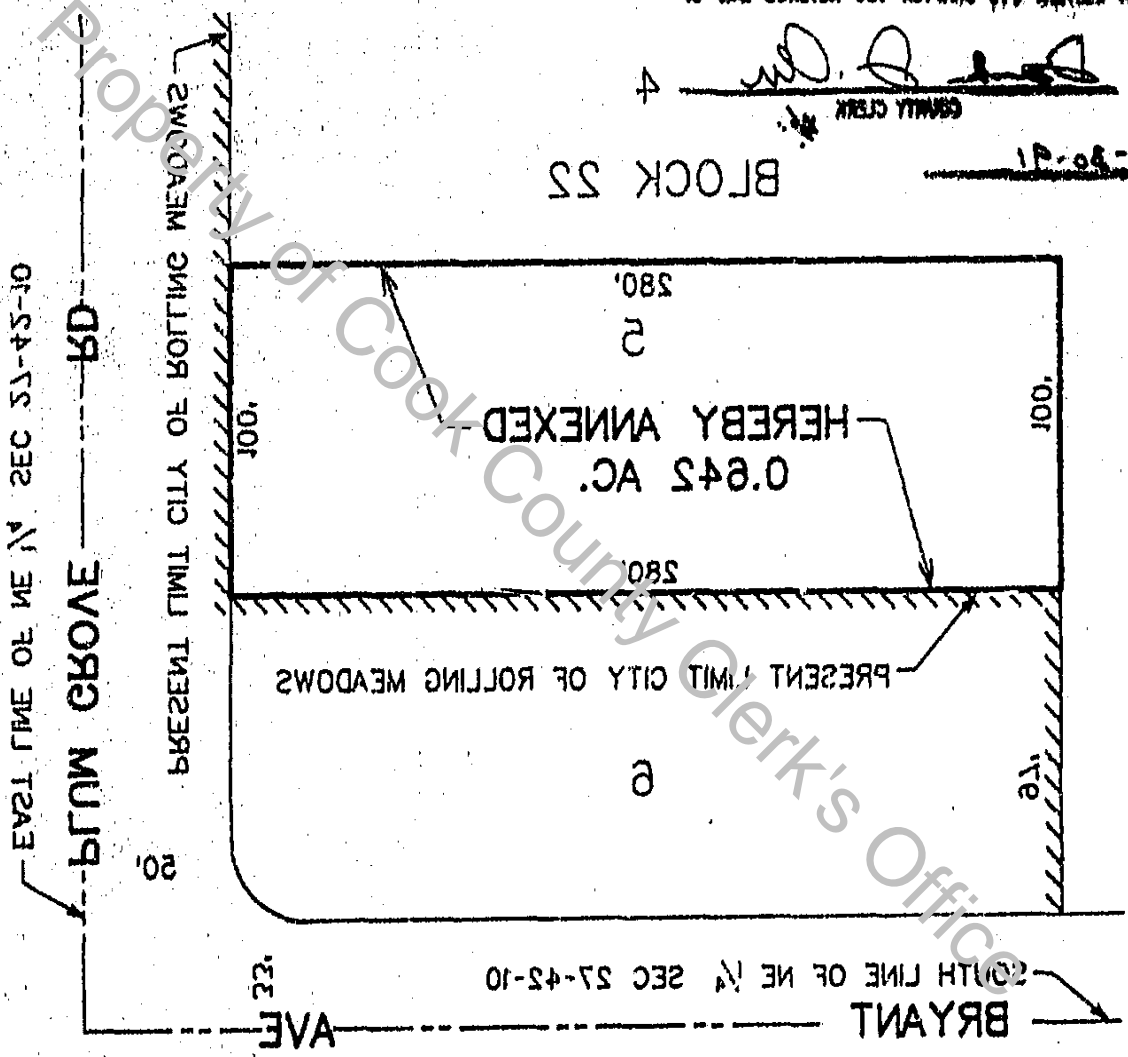
LOT 2 IN BLOCK 22 IN ARTHUR T. MC INTOSH AND COMPANY'S PALATINE ESTATES UNIT 2,
BEING A SUBDIVISION OF PARTS OF SECTION 28 AND 27, TOWNSHIP 42 NORTH, RANGE 10 EAST
OF THE THIRD PRINCIPAL MERIDIAN, IN COOK COUNTY, ILLINOIS.

THIS DOES NOT REQUIRE THE COUNTY CLERK'S ENDORSEMENT
REQUIRED IN SECTION 111 CHAPTER 120 REVENUE LAW OF
ILLINOIS.

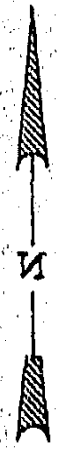
[Signature]
COUNTY CLERK

BLOCK 22

DATE 12-20-19



1" = 80'
SCALE



STATE OF ILLINOIS
COUNTY OF COOK
FLETCHER ENGINEERING COMPANY HEREBY CERTIFIES THAT THE PLAT
HEREON DRAWN HAS BEEN MADE UNDER ITS DIRECTION FROM PLATS
OF RECORD AND IS A CORRECT REPRESENTATION OF SAME.

GIVEN UNDER MY SEAL AT ROLLING MEADOWS, ILLINOIS
September 12 1910, A.D. 1910

[Signature]
CITY ENGINEER CITY OF ROLLING MEADOWS
REGISTERED PROFESSIONAL ENGINEER LICENSE NO. 25278

