



UNOFFICIAL COPY

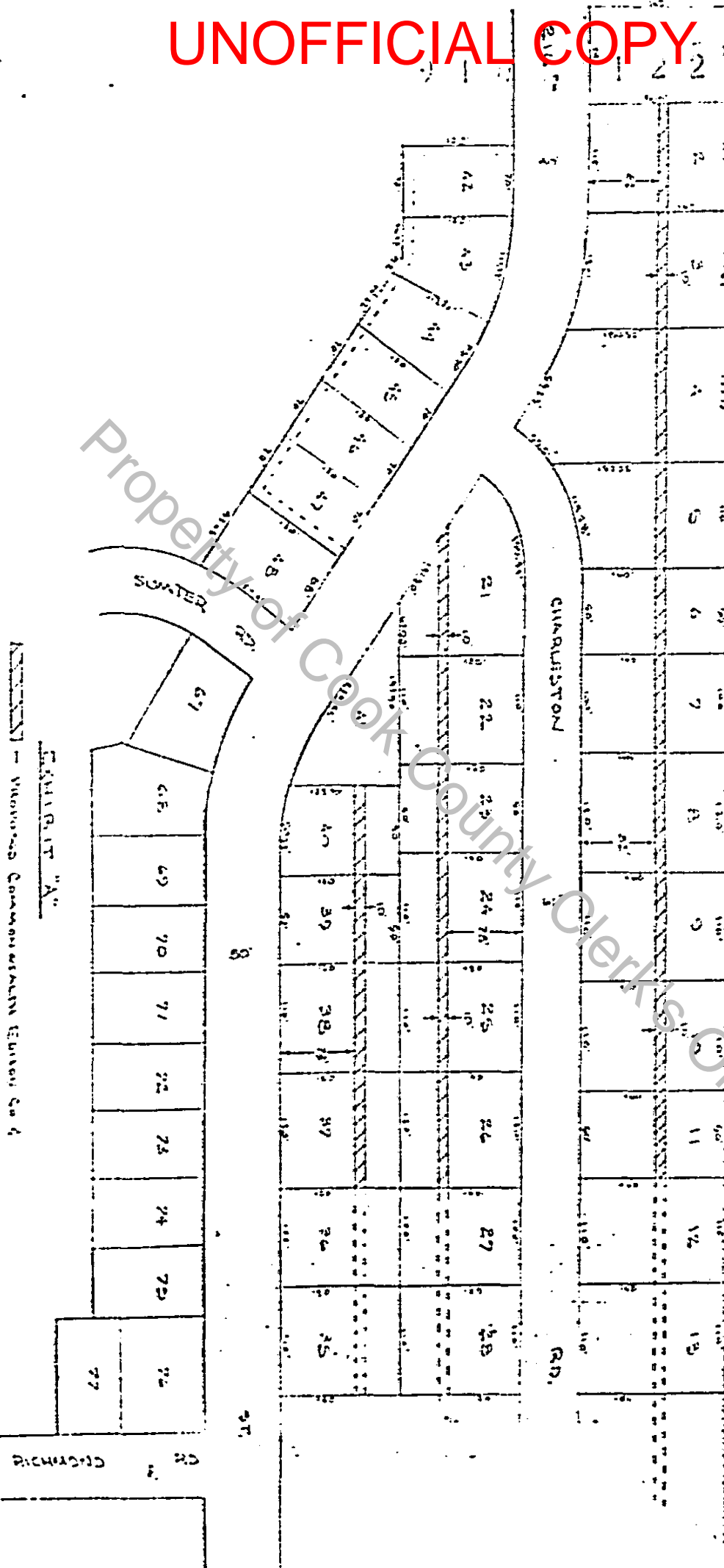
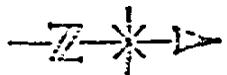
LINCOLN TERRACE SUBDIVISION PHASE I  
Being a subdivision of part of the Northeast 1/4 of Section 27, Township 35 North,  
Range 13 East of the Third Principal Meridian, Cook County, Illinois.

91033122

PEND CENTRAL

ROAD ROW LOTS OF PEND CENTRAL, R.R. 4 NORTH END AT THE  
NORTH END OF 28 SECTION 27-35-13E

R.R.



EMPIRE "A"

--- MONROE COMMERCIAL ESTATE CO. &  
ZIMMERMAN TRUST CO. EMPIRE

----- EXISTING COMMERCIAL ESTATE CO. &  
ILLINOIS BELL TELEPHONE CO. EMPIRE

CR  
CHRYSLER