

0801858

UNOFFICIAL COPY

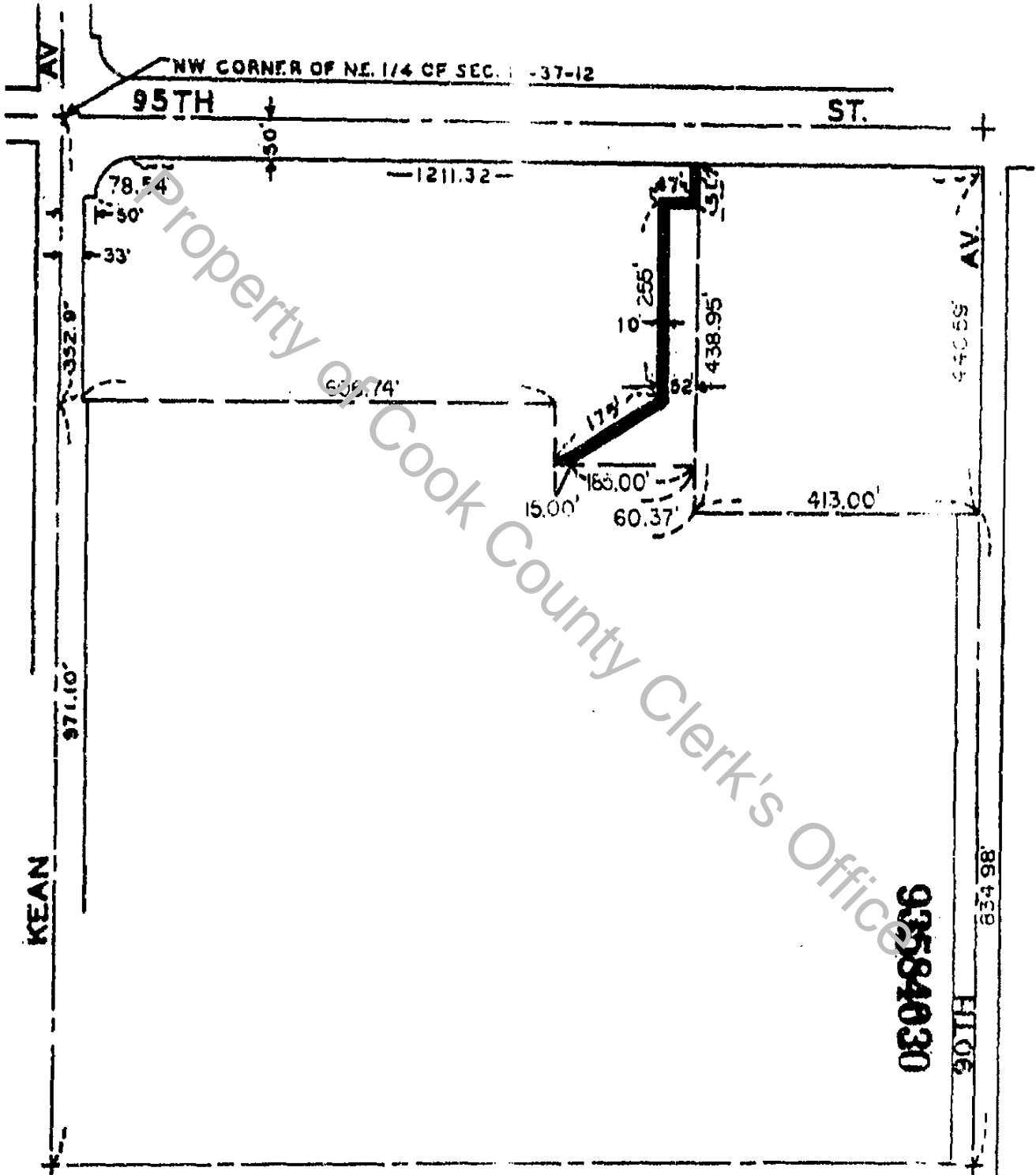
Property of Cook County Clerk's Office

03281030

UNOFFICIAL COPY



That part of the North Half (N 1/2) of the North Half (N 1/2) of the West Half (W 1/2) of the Northeast Quarter (NE 1/4) of Section 10, Township 37 North, Range 12, East of the Third Principal Meridian, in Cook County, Illinois.



93584030

EXHIBIT "A"

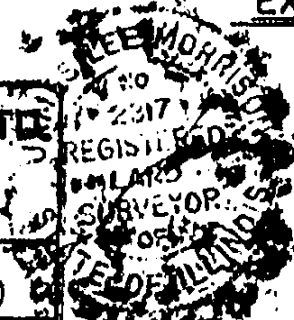


EDMUND M. BURKE ENGINEERING, LTD.

Civil Engineer Consultants • Planners • Land Surveyors

4101 Flossmoor Road,
Phone: (708) 799-1000

Country Club Hills, Illinois 60478
Fax: (708) 799-1222



J. Morrison

DATE: 7-20-93	HORIZONTAL SCALE: 1" = 20'	VERTICAL SCALE: 1" = 20'	SHEET: 1 of 1	PLAT NO: 87-10
------------------	-------------------------------	-----------------------------	------------------	-------------------

