

UNOFFICIAL COPY

OFFICIAL BUSINESS  
Village of Burr Ridge  
Seat Hill, Ill  
760 S County Line Rd  
Burr Ridge, IL 60521

93775278

SEP 28 1993

STATE OF ILLINOIS )  
COUNTY OF COOK ) SS.  
COUNTY OF DU PAGE )

CLERK'S CERTIFICATE

I, PATRICE PECORA, the duly elected, qualified, and acting Village Clerk of the Village of Burr Ridge, Cook and DuPage Counties, Illinois, do hereby certify that attached hereto is a true and correct copy of that Ordinance now on file in my office, entitled:

ORDINANCE NO. 755

DEPT-01 RECORDING \$117.00

T#6666 TRAN 2073 09/28/93 12:30:00

\$7960 \$ \*-93-775278

ORDINANCE APPROVING VACATION OF  
SIDEWALK EASEMENT (ARROWHEAD FARM) COOK COUNTY RECORDER

which Ordinance was passed by the Board of Trustees of the Village of Burr Ridge at a regular meeting held on the 13th day of September, 1993, at which meeting a quorum was present, and approved by the President of the Village of Burr Ridge on the 13th day of September, 1993.

I further certify that the vote on the question of the passage of the said Ordinance by the Board of Trustees of the Village of Burr Ridge was taken by the Ayes and Nays and recorded in the Journal of Proceedings of the Board of Trustees of the Village of Burr Ridge and that the result of said vote was as follows, to-wit:

AYES: 6 - Trustees Irmen, Santacaterina, Jacobs, McGirr, Cizek & Ringewald

NAYS: 0 - None

ABSENT: 0 - None

I do further certify that the original Ordinance, of which the attached is a true copy, is entrusted to my care for safekeeping, and that I am the lawful keeper of the same.

IN WITNESS WHEREOF, I have hereunto set my hand and affixed the seal of the Village of Burr Ridge, this 13th day of September, 1993.

PLAT WITH THIS DOCUMENT

Patrice Pecora  
Village Clerk

Box 324 SFU/ra

93775278

# UNOFFICIAL COPY

PROPERTY

COOK COUNTY CLERK'S OFFICE  
110 N. LAUREL ST. CHICAGO, ILL. 60602  
(312) 603-5000

COOK COUNTY CLERK'S OFFICE

The County of Cook, Illinois, do hereby certify that the following is a true and correct copy of the original as the same appears on the records of the County of Cook, Illinois, to-wit:

\_\_\_\_\_

Property of Cook County Clerk's Office

\_\_\_\_\_

\_\_\_\_\_

\_\_\_\_\_

\_\_\_\_\_

\_\_\_\_\_

\_\_\_\_\_

\_\_\_\_\_

\_\_\_\_\_

\_\_\_\_\_

UNOFFICIAL COPY

PAMPHLET

FRONT OF PAMPHLET

ORDINANCE APPROVING VACATION OF  
SIDEWALK EASEMENT (ARROWHEAD FARM)

Published in pamphlet form this 13th day of September, 1993, by  
Order of the Corporate Authorities of the Village of Burr Ridge,  
Cook and DuPage Counties, Illinois.

  
Village Clerk

93775278

# UNOFFICIAL COPY

Property of Cook County Clerk's Office

2011/11/15

COOK COUNTY CLERK'S OFFICE  
111 N. LAUREL ST. CHICAGO, IL 60602  
TEL: 312.603.4000 FAX: 312.603.4001  
WWW.COOKCOUNTYCLERK.COM

# UNOFFICIAL COPY

JSG:ry  
09/13/93

ORDINANCE NO. 755

## ORDINANCE APPROVING VACATION OF SIDEWALK EASEMENT (ARROWHEAD FARM)

WHEREAS, a 20 foot wide public access and sidewalk easement was previously created along the eastern edge of 8 single family lots as described hereinbelow, running south from German Church Road along the eastern boundary of the Arrowhead Farm Subdivision ("Subdivision");

WHEREAS, the easement for said public sidewalk was previously granted to the Village by the Arrowhead Farm subdivision plat recorded July 11, 1990 as document number 90332419 with the Cook County Recorder's Office;

WHEREAS, pursuant to an approved change in the plan of development for the Subdivision, the proposed installation of a public sidewalk within said easement along the eastern edge of these 8 lots is no longer necessary;

WHEREAS, said sidewalk easement was granted to the Village and does not involve any other public or private rights in said easement area other than for public sidewalk use;

WHEREAS, it is in the best interests of the Village and its residents that said easement be vacated.

NOW, THEREFORE, Be It Ordained by the President and Trustees of the Village of Burr Ridge, Cook and DuPage Counties, Illinois, as follows:

93775275

# UNOFFICIAL COPY

Page 1 of 1

Case No. 123456789

IN RE: [Illegible Case Name]

[Illegible text body]

Property of Cook County Clerk's Office

123456789

# UNOFFICIAL COPY

JSG:ry  
09/13/93

1. That the public access and sidewalk easement created by the plat of subdivision for Arrowhead Farm Subdivision, legally described as follows:

THE EAST TWENTY FEET OF LOTS 22, 23, 24, 25, 30, 31, 32 IN ARROWHEAD FARM SUBDIVISION, A SUBDIVISION OF THE NORTHEAST QUARTER, OF THE SOUTHWEST QUARTER OF SECTION 31, TOWNSHIP 38 NORTH, RANGE 12, EAST OF THE THIRD PRINCIPAL MERIDIAN, ALL IN COOK COUNTY, ILLINOIS. RECORDED JULY 11, 1990 AS DOCUMENT NUMBER 90332419.

AND

THE EAST TWENTY FEET OF LOT 33 (EXCEPT THE NORTH TEN FEET) IN ARROWHEAD FARM SUBDIVISION, A SUBDIVISION OF THE NORTHEAST QUARTER, OF THE SOUTHWEST QUARTER OF SECTION 31, TOWNSHIP 38 NORTH, RANGE 12, EAST OF THE THIRD PRINCIPAL MERIDIAN, ALL IN COOK COUNTY, ILLINOIS. RECORDED JULY 11, 1990 AS DOCUMENT NUMBER 90332419.

is hereby vacated.

2. That a plat vacating this sidewalk easement entitled "PLAT OF VACATION OF PUBLIC ACCESS AND SIDEWALK EASEMENT" has been prepared, said plat in that form attached hereto as EXHIBIT A and made a part hereof by reference, prepared by James L. Cainkar, Willowbrook, Illinois, and dated April 14, 1992 ("Plat"). The Plat is hereby approved and the Village President and Clerk are hereby authorized to execute said PLAT OF VACATION OF PUBLIC ACCESS AND SIDEWALK EASEMENT.

3. That the Village Clerk is hereby and herewith instructed to record with the Recorder of Deeds of Cook County, Illinois, and to file with the County Clerk of Cook County Illinois:

(a) a copy of this Ordinance certified as correct by the Village Clerk

# UNOFFICIAL COPY

of the same manner, and the same shall be done in  
all cases, and the same shall be done in all cases  
in which the same shall be done in all cases.

IN WITNESS WHEREOF, I have hereunto set my hand and  
the seal of the County of Cook, Illinois, this 1st day of  
January, 1900.

Property of Cook County Clerk's Office

Attest: My hand and the seal of the County of Cook,  
Illinois, this 1st day of January, 1900.

Witness my hand and the seal of the County of Cook,  
Illinois, this 1st day of January, 1900.

IN WITNESS WHEREOF, I have hereunto set my hand and  
the seal of the County of Cook, Illinois, this 1st day of  
January, 1900.

1900



# UNOFFICIAL COPY

JSG:ry  
09/13/93

(b) said plat to be attached to the aforesaid certified copy of this Ordinance.

4. That the Village Clerk is hereby directed to record the Plat with the proper Recorder's Office following execution as provided hereunder.

5. This Ordinance shall be in full force and effect upon its adoption and approval as required by law.

ADOPTED this 13th day of September, 1993, by a roll call vote as follows:

AYES: 6 - Trustees Irmen, Santacaterina, Jacobs, McGirr, Cizek & Ringewald

NAYS: 0 - None

ABSENT: 0 - None

APPROVED by the Village President this 13th day of September, 1993.

  
Village President

ATTEST:

  
Village Clerk

RYVA:BURR\ORDINANC\ARRONHEA.RES

# UNOFFICIAL COPY

IN SENATE, January 11, 1900.

REPORT OF THE COMMISSIONERS OF THE LAND OFFICE.

IN RESPONSE TO A RESOLUTION PASSED BY THE SENATE, JANUARY 11, 1899.

ALBANY: J. B. LIPPINCOTT COMPANY, 1899.

ALBANY: J. B. LIPPINCOTT COMPANY, 1899.

ALBANY: J. B. LIPPINCOTT COMPANY, 1899.

ALBANY: J. B. LIPPINCOTT COMPANY, 1899.

ALBANY: J. B. LIPPINCOTT COMPANY, 1899.

ALBANY: J. B. LIPPINCOTT COMPANY, 1899.

ALBANY: J. B. LIPPINCOTT COMPANY, 1899.

ALBANY: J. B. LIPPINCOTT COMPANY, 1899.

ALBANY: J. B. LIPPINCOTT COMPANY, 1899.

ALBANY: J. B. LIPPINCOTT COMPANY, 1899.

ALBANY: J. B. LIPPINCOTT COMPANY, 1899.

ALBANY: J. B. LIPPINCOTT COMPANY, 1899.

ALBANY: J. B. LIPPINCOTT COMPANY, 1899.

ALBANY: J. B. LIPPINCOTT COMPANY, 1899.

ALBANY: J. B. LIPPINCOTT COMPANY, 1899.

ALBANY: J. B. LIPPINCOTT COMPANY, 1899.

ALBANY: J. B. LIPPINCOTT COMPANY, 1899.

ALBANY: J. B. LIPPINCOTT COMPANY, 1899.

ALBANY: J. B. LIPPINCOTT COMPANY, 1899.

ALBANY: J. B. LIPPINCOTT COMPANY, 1899.

ALBANY: J. B. LIPPINCOTT COMPANY, 1899.

ALBANY: J. B. LIPPINCOTT COMPANY, 1899.

ALBANY: J. B. LIPPINCOTT COMPANY, 1899.

ALBANY: J. B. LIPPINCOTT COMPANY, 1899.

ALBANY: J. B. LIPPINCOTT COMPANY, 1899.

Property of Cook County Clerk's Office

# UNOFFICIAL COPY

93775278

## PLAT OF VACATION OF PUBLIC ACCESS and SIDEWALK EASEMENT

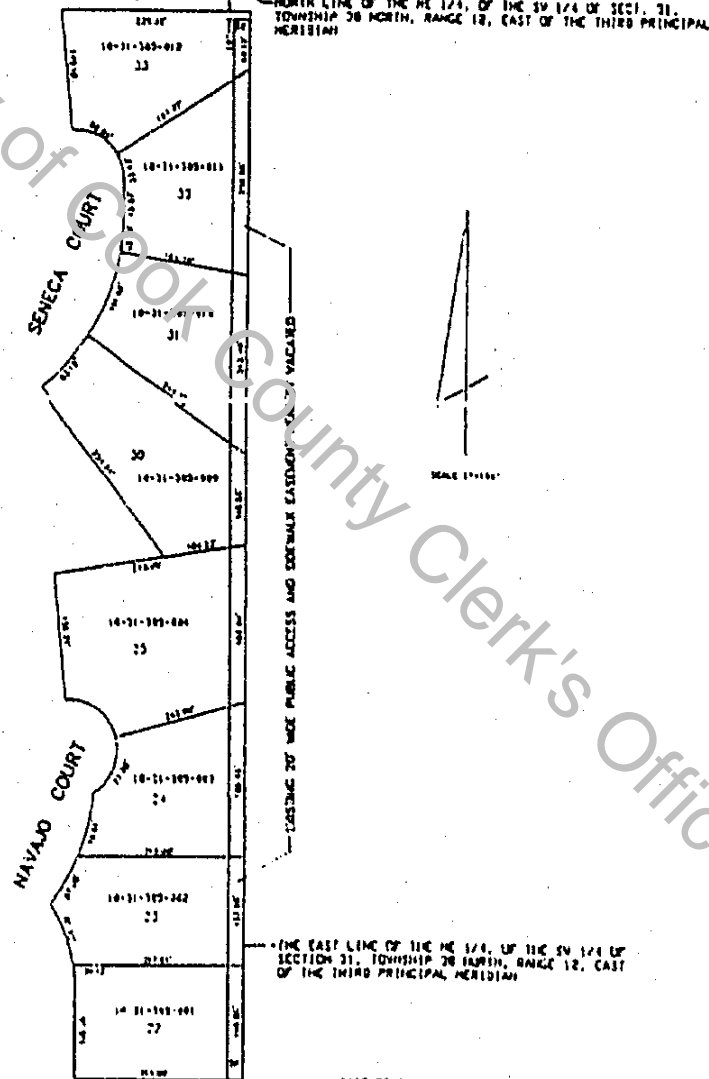
OF

THE EAST TWENTY FEET OF LOTS 28, 29, 30, 31, 32 IN ARROWHEAD FARM SUBDIVISION, A SUBDIVISION OF THE NORTHEAST QUARTER, OF THE SOUTHWEST QUARTER OF SECTION 31, TOWNSHIP 38 NORTH, RANGE 12, EAST OF THE THIRD PRINCIPAL MERIDIAN, ALL IN COOK COUNTY, ILLINOIS, RECORDED JULY 11, 1998 AS DOCUMENT NUMBER 90322419,

AND

THE EAST TWENTY FEET OF LOT 33 (EXCEPT THE NORTH TEN FEET) IN ARROWHEAD FARM SUBDIVISION, A SUBDIVISION OF THE NORTHEAST QUARTER, OF THE SOUTHWEST QUARTER OF SECTION 31, TOWNSHIP 38 NORTH, RANGE 12, EAST OF THE THIRD PRINCIPAL MERIDIAN, ALL IN COOK COUNTY, ILLINOIS, RECORDED JULY 11, 1998 AS DOCUMENT NUMBER 90322419.

GERMAN-CHURCH RD.



STATE OF ILLINOIS )  
COUNTY OF DU PAGE )

I, JAMES L. CANNON, A REGISTERED ILLINOIS LAND SURVEYOR, HEREBY CERTIFY THAT THE PLAT AS HERETOBY SHOWN IS A CORRECT REPRESENTATION OF THE PROPERTY DESCRIBED IN THE FOREGOING INSTRUMENT.

DATED AT VILLOMBRICH, ILLINOIS, THIS 14TH DAY OF APRIL, 1998.

JAMES L. CANNON, REGISTERED ILLINOIS LAND SURVEYOR NO. 2656

93775278

**EXHIBIT A**

# UNOFFICIAL COPY

Property of Cook County Clerk's Office

UNOFFICIAL COPY

PAMPHLET

BACK OF PAMPHLET

ORDINANCE APPROVING VACATION OF  
SIDEWALK EASEMENT (ARROWHEAD FARM)

Property of Cook County Clerk's Office

93775275

Published in pamphlet form by Order of the Corporate Authorities of  
the Village of Burr Ridge, DuPage and Cook Counties, Illinois.

# UNOFFICIAL COPY

77-03821

1988-1989

Property of Cook County Clerk's Office

ALL INFORMATION CONTAINED HEREIN IS UNCLASSIFIED  
DATE 11/19/01 BY 60322 UCBAW/STP

1988-1989

This document was prepared with the assistance of the Cook County Clerk's Office. It is not a legal document and should not be used for legal purposes.