

UNOFFICIAL COPY

APPLICATION NO. 219
DOCUMENT NO. 1721637

VOLUME 171 PAGE 2
CERTIFICATE NO. 1509015
OWNER SUBURBAN NATIONAL BANK OF PALATINE,
as Trustee, Trust No. 4398.

93885320

8

SEP 13 1990

CERTIFICATE OF TITLE

93885320

Date Of First Registration
DECEMBER TWENTY NINTH (29th), 1968
TRANSFERRED FROM 1476103
CERTIFICATE NO. 1509015

STATE OF ILLINOIS)
COOK COUNTY)

I Carol Moseley Braun Registrar of Titles in
and for said County, in the State aforesaid, do hereby certify that

SUBURBAN NATIONAL BANK OF PALATINE, a national banking
association, as Trustee under the provisions of a trust agreement
dated the 2nd day of July, 1968, known as Trust Number 4398.

of the County of COOK and State of ILLINOIS
is the owner of an estate in fee simple, in the following described
land situated in the County of Cook and State of Illinois.

DESCRIPTION OF LAND

LOT FIVE.....(5)

In Block 97 in Hoffman Estates VII, being a Subdivision of part of the Southeast Quarter (1/4) of Section 16, Township
41 North, Range 15 East of the Third Principal Meridian, according to Plat thereof registered in the Office of the
Registrar of Titles of Cook County, Illinois, on September 3, 1975, as Document Number 1516089.

07-16-410-013
505 Glendale Lane
Hoffman Estates, Ill. 601

93885320

DEPT-11 RECORD T \$23.50
T#7777 TRAN 0269 11/02/93 13:09:00
#9361 * -93-885320
COOK COUNTY RECORDER

Subject to the Estates, Easements, Incumbrances and Charges noted on
the following memorials page of this Certificate.

Witness My hand and Official Seal

this FOURTEENTH (14th) day of JULY 1988

Registrar of Titles, Cook County, Illinois

MEMORIALS

OF ESTATES, EASEMENTS, INCUMBRANCES AND CHARGES ON THE LAND.

DOCUMENT NO	NATURE AND TERMS OF DOCUMENT	DATE OF DOCUMENT	DATE OF REGISTRATION YEAR-MONTH-DAY-HOUR	SIGNATURE OF REGISTRAR
131711-43 In Duplicate	General Taxes for the year 1932, 1st Inst. paid, 2nd Inst. not paid. Subject to General Taxes levied in the year 1933. Grant from E. & S. Construction Company, Inc., an Arizona Corporation, to Citizens Utilities Company, an Illinois Corporation, its successors and assigns, of a perpetual right and easement in, upon, along and under those parts indicated on and attached plat, to install, operate, maintain and renew its equipment, etc. to be used in furnishing water in foregoing subdivision or adjacent territory together with rights herein granted, all under terms, conditions, limitations and reservations herein contained. For particulars see Document.	Aug. 19, 1938	Sept. 3, 1938 2:15PM	<i>[Signature]</i>
1316974 In Duplicate	Grant from E. & S. Construction Company, Inc., an Arizona Corporation, to The Suburban Utilities Company, an Illinois Corporation, its successors and assigns of a perpetual right and easement in, upon, along and under those parts of a foregoing premises indicated on said attached plat, to be used in furnishing sewerage purification or disposal service on foregoing subdivision or adjacent territory, together with rights herein granted, all under terms, conditions, limitations and reservations herein contained. For particulars see Document.	Aug. 19, 1938	Sept. 3, 1938 2:15PM	<i>[Signature]</i>
1316979 In Duplicate	Subject to reservation and grant of easements to Commonwealth Edison Company and Illinois Bell Telephone Company, their successors and assigns, for the purpose of carrying foregoing premises and adjacent property with electric and telephone service, together with all rights therein granted, under terms, conditions and limitations stated, as shown on Plat Document Number 1316959. For particulars see Document. Subject to reservation and grant of easement to Citizens Utilities Company, an Illinois Corporation, its successors and assigns, for the purpose of furnishing water in foregoing premises and adjacent territory, together with all rights therein granted, under terms, conditions, limitations and reservations stated, as shown on Plat Document Number 1316959. For particulars see Document. Subject to reservation and grant of easements to Suburban Utilities Company, an Illinois Corporation, its successors and assigns, for the purpose of furnishing sewerage purification or disposal service on adjacent subdivision or adjacent territory together with all rights therein granted, under terms, conditions, limitations and reservations stated, as shown on Plat Document Number 1316959. For particulars see Document. Subject to reservation contained on Plat Document Number 1316959, all easements and back lanes to the streets are 19 feet and to adjacent easements indicated on said Plat. For particulars see Document. Declaration by E. & S. Construction Company, Inc., an Arizona Corporation, of conditions, restrictions and stipulations to be conventionally running with the land for a period of 50 years from September 3, 1938, with provision for automatic extension, etc. also provides for preservation in event of violation thereof, but no provision for reverter. For particulars see Document.	Sept. 3, 1938	Sept. 5, 1938 2:15 PM	<i>[Signature]</i>
1316531 In Duplicate	Mortgage from Donald R. Selke and Judith D. Selke, to Bell Federal Savings and Loan Association, a corporation of the United States, to secure note in the principal sum of \$16,000.00, payable as therein stated. For particulars see Document.	Sept. 23, 1970	Oct. 22, 1970 11:21 PM	<i>[Signature]</i>
2327291 In Duplicate	Mortgagee's Duplicate Certificate 199411 issued 10/22/70 on Mortgage 2327291. Mortgage from Palatine National Bank, as Trustee, under Trust Number 4193, to Douglas Savings and Loan Association, to secure a Revolving Line of Credit Equity CANCELLED sum of \$18,000.00, with interest, payable as therein stated. For particulars see Document. (Riders attached hereto and made a part hereof).	Mar. 26, 1937	Apr. 13, 1937 3:17 PM	<i>[Signature]</i>
1608207 In Duplicate	Mortgage from Suburban National Bank of Palatine, as Trustee, Trust No. 4193, to Douglas Savings and Loan Association, a corporation, to secure note in the sum of \$60,000.00, payable as therein stated. For particulars see Document. (Riders attached).	June 30, 1938	July 19, 1938 2:10 PM	<i>[Signature]</i>
13723638 133715-38 In Duplicate	General Taxes for the year 1937, 1st Inst. paid, 2nd Inst. not paid. Subject to General Taxes levied in the year 1938. Release Deed in favor of Palatine National Bank, as Trustee, Trust No. 4358. Releases Document Number 1608207.	July 26, 1938	July 26, 1938 2:05 PM	<i>[Signature]</i>
13726480 In Duplicate	Mortgagee's Duplicate Certificate 256702 effective 7/26/38 issued 10/15/90 on Mortgage 13723638			<i>[Signature]</i>

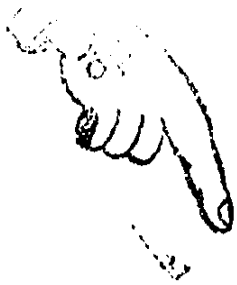
M D only 10-15-90

25655320

UNOFFICIAL COPY

Property of Cook County Clerk's Office

93555320



DOUGLAS SAVINGS & LOAN ASS.
14 N. DRYDEN
AVAL. HTS - IL. 60004