

JUL 24 1978

VOLUME PAGE  
CERTIFICATE NO 1289743  
OWNER HAS BEEN RECORDED



94910418

Date Of First Registration

JUL 24 1978

STATE OF ILLINOIS  
(COUNTY)

I, Anthony H. Chan, Registrar of Titles in  
and for said County in the State aforesaid, do hereby certify that

JAMES H. LLOYD AND BESSIE L. LLOYD  
WIFE OF JAMES H. LLOYD  
BY: [Signature]

of the County of Cook and State of Illinois  
is the owner of an estate in fee simple, in the following described  
land situated in the County of Cook and State of Illinois:

DESCRIPTION OF LAND

In Block fifteen (15) of Warren Park, Castlewood Subdivision, Part No. 2, being a  
portion of part of the East half of the Northeast 1/4, Quarter 34, and part  
of the North 1/4 and the Southeast 1/4, Section 17, Township 37  
North, Range 12 East, of the 7th Principal Meridian, in Cook County, Illinois, of  
Castlewood Subdivision, Part No. 2, according to Plan of said Warren Park, inters  
settlement Subdivision, Part No. 2, registered in the Office of the Registrar of  
Titles of said County, Illinois, on March 22, 1977, as shown on page 218-117.

Midwest Mt. James  
19018 N. Myrtle Rd. Suite 36C  
Oakbrook Terrace IL 60181

28 17-404-006

3919 Victoria Dr  
Oak Forest IL 60452

Subject to the Estates, Easements, Incumbrances and Charges noted on  
the following memorial's page of this Certificate.

94910418

Witness My hand and Official Seal

this \_\_\_\_\_ day of \_\_\_\_\_ 1978  
Registrar of Titles Cook County, Illinois



# UNOFFICIAL COPY

attest:

Property of Cook County Clerk's Office

UNOFFICIAL COPY

M E M O R I A N D U M

OF ESTATES, EASEMENTS, INCUMBRANCES AND CHARGES ON THE LAND.

DOCUMENT NO.

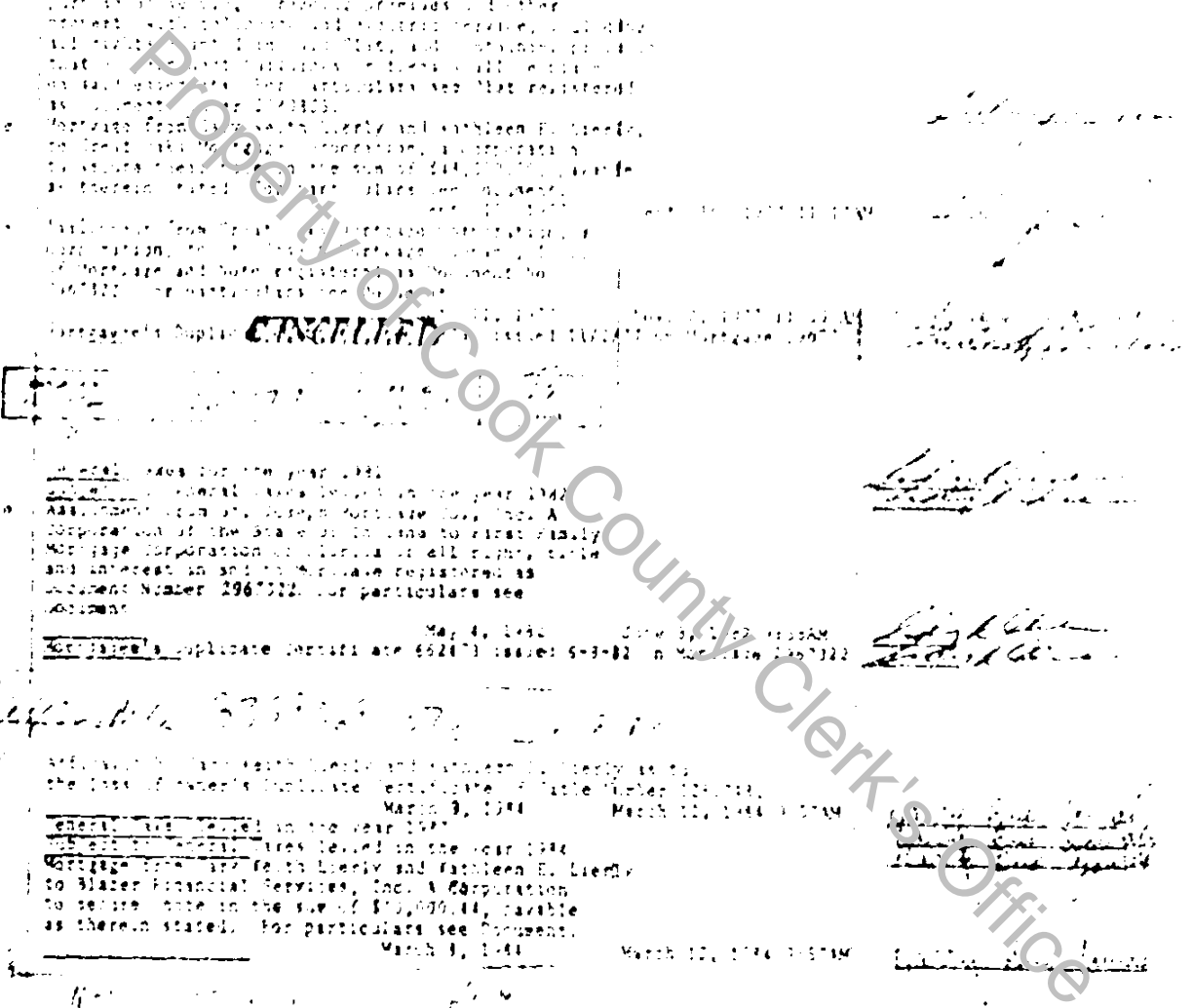
NATURE AND TERMS OF DOCUMENT

DATE OF DOCUMENT

DATE OF REGISTRATION

SIGNATURE AND REGISTRY

111733-37	General Taxes for the year 1986. Subject to General Taxes levied in the year 1987. Mortgage from Gary Keith Liery and Kathleen E. Liery, to Blazer Financial Services, Inc., a Corporation, to secure note in the sum of \$26,815.00, payable as thereon stated. For particulars see Document Number 111733-38.			
In duplicate	Mortgage from Gary Keith Liery and Kathleen E. Liery, to Blazer Financial Services, Inc., a Corporation, to secure note in the sum of \$26,815.00, payable as thereon stated. For particulars see Document Number 111733-38.	Mar 14, 1986	Mar 14, 1986 10:11AM	
111733-38	Mortgage from Gary Keith Liery and Kathleen E. Liery, to Blazer Financial Services, Inc., a Corporation, to secure note in the sum of \$26,815.00, payable as thereon stated. For particulars see Document Number 111733-38.	Mar 14, 1986	Mar 14, 1986 10:11AM	
111733-39	Mortgage from Gary Keith Liery and Kathleen E. Liery, to Blazer Financial Services, Inc., a Corporation, to secure note in the sum of \$26,815.00, payable as thereon stated. For particulars see Document Number 111733-38.	Mar 14, 1986	Mar 14, 1986 10:11AM	
111733-40	Mortgage from Gary Keith Liery and Kathleen E. Liery, to Blazer Financial Services, Inc., a Corporation, to secure note in the sum of \$26,815.00, payable as thereon stated. For particulars see Document Number 111733-38.	Mar 14, 1986	Mar 14, 1986 10:11AM	
128551-32	General Taxes for the year 1986. Subject to General Taxes levied in the year 1987. Mortgage from Gary Keith Liery and Kathleen E. Liery, to Blazer Financial Services, Inc., a Corporation, to secure note in the sum of \$26,815.00, payable as thereon stated. For particulars see Document Number 128551-33.			
In duplicate	Mortgage from Gary Keith Liery and Kathleen E. Liery, to Blazer Financial Services, Inc., a Corporation, to secure note in the sum of \$26,815.00, payable as thereon stated. For particulars see Document Number 128551-33.	Mar 4, 1986	Mar 5, 1986 10:35AM	
1292127	General Taxes for the year 1986. Subject to General Taxes levied in the year 1987. Mortgage from Gary Keith Liery and Kathleen E. Liery, to Blazer Financial Services, Inc., a Corporation, to secure note in the sum of \$26,815.00, payable as thereon stated. For particulars see Document Number 1292127.	Mar 9, 1986	Mar 10, 1986 10:37AM	
129555-44	General Taxes for the year 1986. Subject to General Taxes levied in the year 1987. Mortgage from Gary Keith Liery and Kathleen E. Liery, to Blazer Financial Services, Inc., a Corporation, to secure note in the sum of \$26,815.00, payable as thereon stated. For particulars see Document Number 129555-45.	Mar 9, 1986	Mar 10, 1986 10:37AM	
1352170	General Taxes for the year 1986. Subject to General Taxes levied in the year 1987. Mortgage from Gary Keith Liery and Kathleen E. Liery, to Blazer Financial Services, Inc., a Corporation, to secure note in the sum of \$26,815.00, payable as thereon stated. For particulars see Document Number 1352170.	Mar 11, 1986	Mar 12, 1986 10:37AM	
149533-46	General Taxes for the year 1986. Subject to General Taxes levied in the year 1987. Mortgage from Gary Keith Liery and Kathleen E. Liery, to Blazer Financial Services, Inc., a Corporation, to secure note in the sum of \$26,815.00, payable as thereon stated. For particulars see Document Number 149533-47.			
157161	General Taxes for the year 1986. Subject to General Taxes levied in the year 1987. Mortgage from Gary Keith Liery and Kathleen E. Liery, to Blazer Financial Services, Inc., a Corporation, to secure note in the sum of \$26,815.00, payable as thereon stated. For particulars see Document Number 157161.			



049810:15

UNOFFICIAL COPY

1 1

Property of Cook County Clerk's Office

0000

82101646