

UNOFFICIAL COPY

PLAT

95963282

6-5-05

SEE PLAT BOOKS

Property of Cook County Clerk's Office

UNOFFICIAL COPY

Property of Cook County Clerk's Office

UNOFFICIAL COPY

95363282

7379097 DB N 1a-ell

SECOND AMENDMENT
TO
DECLARATION OF CONDOMINIUM OWNERSHIP
AND OF EASEMENTS, RESTRICTIONS, COVENANTS AND BY-LAWS
FOR
RIVER PLAZA CONDOMINIUM

LOCATED AT

PREMISES COMMONLY KNOWN AS 405 NORTH WABASH AVENUE
CHICAGO, ILLINOIS

PURSUANT TO THE CONDOMINIUM PROPERTY ACT OF ILLINOIS

. DEPT-01 RECORDING \$116.00
. T40012 TRAN 4457 06/05/95 09:56:00
. \$9169 + JM *-95-363282
. COOK COUNTY RECORDER

This instrument drafted by
and upon recordation return to:

Alan O. Amos
Alan O. Amos & Associates, P.C.
Suite 5200
3 First National Plaza
Chicago, Illinois 60602

Permanent Real
Estate Index Number of
condominium:

17-10-132-001-0000
through
17-10-132-011-0000
(pre-conversion)

TO RECORDER AND ASSESSOR:

THIS AMENDMENT IS FILED
SOLELY FOR THE PURPOSE OF
COMBINING UNITS 4811 and
4812.

95363282

RECORDING FEE \$ 116.00
DATE 6/5/95 COPIES 6
OK 99M

BOX 333

UNOFFICIAL COPY

Property of Cook County Clerk's Office

**PLAT WITH THE'S
DOCUMENT**

UNOFFICIAL COPY

**SECOND AMENDMENT TO
DECLARATION OF CONDOMINIUM OWNERSHIP
AND EASEMENTS, RESTRICTIONS, COVENANTS AND BY-LAWS
FOR
RIVER PLAZA CONDOMINIUM**

THIS SECOND AMENDMENT TO DECLARATION OF CONDOMINIUM OWNERSHIP AND EASEMENTS, RESTRICTIONS, COVENANTS AND BY-LAWS FOR RIVER PLAZA CONDOMINIUM, made and entered into by the Trustee (as hereinafter defined) as of February 15, 1995.

WITNESSETH: THAT

WHEREAS, as of August 26, 1994 a Declaration of Condominium Ownership and Easements, Restrictions, Covenants and By-Laws for River Plaza Condominium (hereinafter referred to as "Declaration") was made and declared by LaSalle National Trust, N.A. as trustee under a trust agreement dated August 1, 1994 and known as Trust Number 118678 (hereinafter referred to as "Trustee") for the parcel of real estate described as:

Parcel 1 Lots 3, 5, 8, 15, 16, 17, 19, 20, 22, 31, 32, 33, 34, 35, 36, 37, 38, 39, 41, 44, 45, 46, 47 and 48 in River Plaza Resubdivision of Land, Property and Space of Lots 1 to 12 and vacated alley in Block 5 in Kinzie's Addition to Chicago in the Northwest 1/4 of Section 10, Township 39 North, Range 14 East of the Third Principal Meridian in Cook County, Illinois.

Parcel 2 Easement for the benefit of Parcel 1 for ingress, egress, use and enjoyment of the property as set forth in the River Plaza Declaration of Covenants, Conditions, Restrictions, and Easements recorded as document 94-758750.

WHEREAS, the Declaration was filed for record with the Recorder of Deeds of Cook County on August 26, 1994 as document number 94-758753;

WHEREAS, the Trustee reserved onto itself the right from time to time to amend the Declaration and the Plat (as defined in the Declaration);

WHEREAS, the Trustee does hereby exercise its right to so amend the Declaration and the Plat;

NOW, THEREFORE, the Trustee, pursuant to rights granted to it under the Declaration and for the purposes above set forth,

DECLARES AS FOLLOWS:

UNOFFICIAL COPY

Property of Cook County Clerk's Office

0000000000

UNOFFICIAL COPY

1. That page 57 of the Plat, being Exhibit B to the Declaration, is hereby amended by the substitution thereof of Amended page 57 in its place and stead. Such Amended page is attached hereto and made a part hereof.

2. That Exhibit D to the Declaration is hereby amended by the substitution thereof of Amended Exhibit D in its place and stead. Such Amended Exhibit D is attached hereto and made a part thereof.

3. This Amendment to Declaration is executed by LaSalle National Trust, N.A. ("LaSalle"), as Trustee as aforesaid, in the exercise of the power and authority conferred upon and vested in it as such Trustee (and LaSalle hereby warrants that it possesses full power and authority to execute this instrument). It is expressly understood and agreed by every person, firm or corporation hereafter claiming any interest under this Amendment to Declaration that LaSalle, as Trustee as aforesaid, and not personally, has joined in the execution of this Amendment to Declaration for the sole purpose of subjecting the title holding interest and the trust estate under said Trust No. 118678 to the terms of this Amendment to Declaration; that any and all obligations, duties, covenants, indemnities and agreements of every nature herein set forth by LaSalle, as Trustee as aforesaid, to be kept or performed, are intended to be kept, performed and discharged by the beneficiary under said Trust No. 118678 or its successors, and not by LaSalle personally; and further, that no duty shall rest upon LaSalle either personally or as such Trustee, to sequester trust assets, rentals, avails, or proceeds of any kind, or otherwise to see to the fulfillment or discharge of any obligation, express or implied, arising under the terms of this Amendment to Declaration, except where said Trustee is acting pursuant to direction as provided by the terms of said Trust No. 118678 after the Trustee has been supplied with funds required for the purpose. In the event of conflict between the terms of this paragraph and of the remainder of this Amendment to Declaration on any questions of apparent liability or obligation resting upon said Trustee, the exculpatory provision hereof shall be controlling.

UNOFFICIAL COPY

IN WITNESS WHEREOF, LaSalle National Trust, N.A., as Trustee as aforesaid and not individually, has caused its corporate seal to be affixed hereunto and has caused its name to be signed to these presents this 24th day of May, 1995.

LASALLE NATIONAL TRUST, N.A.,
as Trustee, under a Trust
Agreement dated August 1, 1994,
and known as Trust No. 11867B

By: [Signature]
Its Vice President
Senior

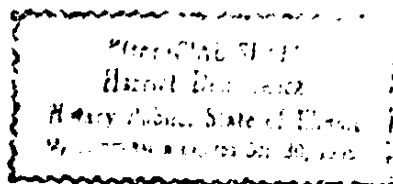
Attest: [Signature]
Its Assistant Secretary

Property of [Faint Stamp]

STATE OF ILLINOIS)
) SS
COUNTY OF COOK)

The undersigned, a Notary Public in and for the County and State aforesaid, do hereby certify that [Signature] and Nancy A. Stack, Vice President and Assistant Secretary, respectively, of LaSalle National Trust, N.A., as Trustee as aforesaid, personally known to me to be the same persons whose names are subscribed to the foregoing instrument as such and respectively appeared before me this day in person and acknowledged that they signed and delivered the said instrument as their own free and voluntary act, and as the free and voluntary act of said Trustee, for the use and purposes therein set forth; and there was then affixed the said Corporate Seal of said Trustee to said instrument as affixer's free and voluntary act, and as the free and voluntary act of said Trustee, for the uses and purposes therein set forth.

GIVEN under my hand and notarial seal, May 24, 1995.



[Signature]
Notary Public

95363282

UNOFFICIAL COPY

Property of Cook County Clerk's Office

2025-01-08 10:00:00

UNOFFICIAL COPY

CONSENT OF MORTGAGEE

LaSalle National Bank, holder of a Mortgage on the Property dated August 26, 1994 and Recorded as Document Number 94-758754 hereby consents to the execution and recording of the within First Amendment to Declaration.

IN WITNESS WHEREOF, LaSalle National Bank has caused this Consent of Mortgagee to be executed by its duly authorized officers on its behalf this 24th day of May, 1995.

LaSALLE NATIONAL BANK

By Ronellina P. Ziebart
Its (or U.S.)

Attest: [Signature]
ITS CONSTRUCTION ADMN.

STATE OF ILLINOIS)
) SS
COUNTY OF C O O K)

The undersigned, a Notary Public in and for said County and State, do hereby certify that RONELLINA ZIEBART and CLARK FISHER, 1st VICE President and CONSTRUCTION ADMN. respectively of LaSalle National Bank, personally appeared before me this day in person and acknowledged that they signed, sealed and delivered said instrument as their free and voluntary act, and as the free and voluntary act of said Bank, for the uses and purposes therein set forth.

GIVEN under my hand and notarial seal, May 24, 1995.



[Signature]
Notary Public

UNOFFICIAL COPY

Property of Cook County Clerk's Office

5/20/2024

UNOFFICIAL COPY

THE RIVER PLAZA CONDOMINIUM
AMENDED
EXHIBIT "D"

PERCENTAGE OF UNIT OWNERSHIP INTEREST

12-May-95

Unit no.	% Ownership in Common Elements
101	0.0837%
102	0.1233%
103	0.0678%
104	0.0678%
105	0.0678%
106	0.0747%
107	0.1185%
108	0.0987%
109	0.1025%
110	0.1306%
111	0.1671%
112	0.0757%
113	0.1467%
114	0.1233%
115	0.0875%
201	0.0840%
202	0.1236%
203	0.0681%
204	0.0681%
205	0.0681%
206	0.0749%
207	0.1195%
208	0.0994%
209	0.1032%
210	0.1316%
211	0.1680%
212	0.0763%
213	0.1457%
214	0.1236%
215	0.0878%
301	0.0861%
302	0.1257%

95363282

UNOFFICIAL COPY

Property of Cook County Clerk's Office

5/25/2010 10:00 AM

UNOFFICIAL COPY

303	0.0702%
304	0.0702%
305	0.0702%
306	0.0770%
307	0.1223%
308	0.1019%
309	0.1057%
310	0.1344%
311	0.1709%
312	0.0769%
313	0.1485%
314	0.1257%
315	0.0903%
401	0.0864%
402	0.1260%
403	0.0705%
404	0.0705%
405	0.0705%
406	0.0773%
407	0.1233%
408	0.1025%
409	0.1063%
410	0.1354%
411	0.1718%
412	0.0775%
413	0.1494%
414	0.1260%
415	0.0905%
501	0.0866%
502	0.1262%
503	0.0707%
504	0.0707%
505	0.0707%
506	0.0776%
507	0.1242%
508	0.1032%
509	0.1069%
510	0.1363%
511	0.1728%
512	0.0782%
513	0.1504%
514	0.1262%
515	0.0908%
601	0.0869%

Property of Cook County Clerk's Office

95063282

UNOFFICIAL COPY

Property of Cook County Clerk's Office

5/20/2013 10:11:11 AM

UNOFFICIAL COPY

602	0.1265%
603	0.0710%
604	0.0710%
605	0.3710%
606	0.0778%
607	0.1252%
608	0.1038%
609	0.1076%
610	0.1373%
611	0.1737%
612	0.0788%
613	0.1513%
614	0.1265%
615	0.0910%
701	0.0871%
702	0.1267%
703	0.0712%
704	0.0712%
705	0.0712%
706	0.0781%
707	0.1261%
708	0.1044%
709	0.1082%
710	0.1332%
711	0.1747%
712	0.0794%
713	0.1523%
714	0.1267%
715	0.0913%
801	0.0897%
802	0.1293%
803	0.1440%
805	0.0715%
806	0.0783%
807	0.1271%
808	0.1050%
809	0.1088%
810	0.1392%
811	0.1756%
812	0.0801%
813	0.1532%
814	0.1293%
815	0.0938%
901	0.0922%

Property of Cook County Clerk's Office

95363282

UNOFFICIAL COPY

Property of Cook County Clerk's Office

11/11/2025

UNOFFICIAL COPY

902	0.1318%
903	0.0731%
904	0.0721%
905	0.0721%
906	0.0789%
907	0.1280%
908	0.1057%
909	0.1095%
910	0.1401%
911	0.1765%
912	0.0807%
913	0.1542%
914	0.1318%
915	0.0963%
1001	0.0947%
1002	0.1343%
1003	0.0738%
1004	0.0728%
1005	0.0728%
1006	0.0796%
1007	0.1305%
1008	0.1082%
1009	0.1120%
1010	0.1410%
1011	0.1775%
1012	0.0813%
1013	0.1551%
1014	0.1343%
1015	0.0989%
1101	0.0972%
1102	0.1368%
1103	0.0744%
1104	0.0734%
1105	0.0734%
1106	0.0802%
1107	0.1330%
1108	0.1107%
1109	0.1145%
1110	0.1420%
1111	0.1784%
1112	0.0820%
1113	0.1561%
1114	0.1368%
1115	0.1014%

Property of Cook County Clerk's Office

95363282

UNOFFICIAL COPY

Property of Cook County Clerk's Office

000000000000

UNOFFICIAL COPY

1201	0.0979%
1202	0.1375%
1203	0.1490%
1205	0.0740%
1206	0.0808%
1207	0.1340%
1208	0.1114%
1209	0.1151%
1210	0.1429%
1211	0.1794%
1212	0.0826%
1213	0.1570%
1214	0.1375%
1215	0.1020%
1301	0.0985%
1302	0.1381%
1303	0.0757%
1304	0.0747%
1305	0.0747%
1306	0.0815%
1307	0.1349%
1308	0.1120%
1309	0.1158%
1310	0.1239%
1311	0.1807%
1312	0.0837%
1313	0.1579%
1314	0.1381%
1315	0.1026%
1401	0.0991%
1402	0.1387%
1403	0.0763%
1404	0.0753%
1405	0.1574%
1407	0.1359%
1408	0.1126%
1409	0.1164%
1410	0.1448%
1411	0.1813%
1412	0.0839%
1413	0.1589%
1414	0.1387%
1415	0.1033%
1501	0.0997%

Property of Cook County Clerk's Office

95363282

UNOFFICIAL COPY

Property of Cook County Clerk's Office

11/15/2011

UNOFFICIAL COPY

1502	0.1393%
1503	0.0769%
1504	0.0759%
1505	0.0759%
1506	0.0827%
1507	0.1368%
1508	0.1132%
1509	0.1170%
1510	0.1458%
1511	0.1822%
1512	0.0845%
1513	0.1598%
1514	0.1393%
1515	0.1039%
1601	0.1004%
1602	0.1400%
1603	0.0776%
1604	0.0765%
1605	0.0765%
1606	0.0834%
1607	0.1378%
1608	0.1139%
1609	0.1177%
1610	0.1467%
1611	0.1852%
1612	0.0851%
1613	0.1608%
1614	0.1400%
1615	0.1045%
1701	0.1010%
1702	0.1406%
1703	0.0782%
1704	0.0772%
1705	0.0772%
1706	0.0840%
1707	0.1387%
1708	0.1145%
1709	0.1183%
1710	0.1477%
1711	0.1841%
1712	0.0858%
1713	0.1617%
1714	0.1406%
1715	0.1052%

Property of Cook County Clerk's Office

95363282

UNOFFICIAL COPY

Property of Cook County Clerk's Office

UNOFFICIAL COPY

1801	0.1016%
1802	0.1412%
1803	0.1566%
1805	0.0778%
1806	0.0846%
1807	0.1397%
1808	0.1151%
1809	0.1189%
1810	0.1486%
1811	0.1851%
1812	0.0864%
1813	0.1627%
1814	0.1412%
1815	0.1058%
1901	0.1023%
1902	0.1419%
1903	0.1578%
1905	0.0784%
1906	0.0852%
1907	0.1406%
1908	0.1158%
1909	0.1195%
1910	0.1496%
1911	0.1260%
1912	0.0576%
1913	0.1636%
1914	0.1419%
1915	0.1064%
2001	0.1029%
2002	0.1425%
2003	0.1592%
2005	0.0791%
2006	0.0859%
2007	0.1416%
2008	0.1164%
2009	0.1202%
2010	0.1505%
2011	0.1869%
2012	0.0876%
2013	0.1646%
2014	0.1425%
2015	0.1071%
2101	0.1035%
2102	0.1431%

Property of Cook County Clerk's Office

95063282

UNOFFICIAL COPY

Property of Cook County Clerk's Office

11/15/2023

UNOFFICIAL COPY

2103	0.0807%
2104	0.0797%
2105	0.0797%
2106	0.0865%
2107	0.1425%
2108	0.1170%
2109	0.1208%
2110	0.1515%
2111	0.1879%
2112	0.0883%
2113	0.1655%
2114	0.1431%
2115	0.1077%
2201	0.1042%
2202	0.1438%
2203	0.0813%
2204	0.0803%
2205	0.0803%
2206	0.0871%
2207	0.1434%
2208	0.1177%
2209	0.1214%
2210	0.1524%
2211	0.1588%
2212	0.0883%
2213	0.1665%
2214	0.1438%
2215	0.1083%
2301	0.1048%
2302	0.1444%
2303	0.1630%
2305	0.0810%
2306	0.0878%
2307	0.1444%
2308	0.1183%
2309	0.1221%
2310	0.1533%
2311	0.1898%
2312	0.0895%
2313	0.1674%
2314	0.1444%
2315	0.1090%
2401	0.1054%
2402	0.1450%

Property of Cook County Clerk's Office

95063282

UNOFFICIAL COPY

Property of Cook County Clerk's Office

UNOFFICIAL COPY

2403	0.0826%
2404	0.0816%
2405	0.0816%
2406	0.0384%
2407	0.1453%
2408	0.1189%
2409	0.1227%
2410	0.1543%
2411	0.1907%
2412	0.0902%
2413	0.1683%
2414	0.1450%
2415	0.1096%
2501	0.1061%
2502	0.1457%
2503	0.1654%
2505	0.0822%
2506	0.0890%
2507	0.1463%
2508	0.2428%
2510	0.1552%
2511	0.2825%
2513	0.1693%
2514	0.1457%
2515	0.1102%
2601	0.1098%
2602	0.1507%
2603	0.1680%
2605	0.0835%
2606	0.0903%
2607	0.1513%
2608	0.1233%
2609	0.1271%
2610	0.1562%
2611	0.1967%
2612	0.0933%
2613	0.1743%
2614	0.1507%
2615	0.1140%
2701	0.1105%
2702	0.1513%
2703	0.0851%
2704	0.0841%
2705	0.1750%

Property of Cook County Clerk's Office

95363282

UNOFFICIAL COPY

Property of Cook County Clerk's Office

2025-01-14 10:14:14

UNOFFICIAL COPY

2707	0.1523%
2708	0.1240%
2709	0.1277%
2710	0.1571%
2711	0.1977%
2712	0.0939%
2713	0.1753%
2714	0.1513%
2715	0.1146%
2801	0.1111%
2802	0.1520%
2803	0.0858%
2804	0.0847%
2805	0.0847%
2806	0.0916%
2807	0.1532%
2808	0.1246%
2809	0.1284%
2810	0.1581%
2811	0.2932%
2813	0.1762%
2814	0.1520%
2815	0.1153%
2901	0.1117%
2902	0.1526%
2903	0.1718%
2905	0.1776%
2907	0.1542%
2908	0.1252%
2909	0.1290%
2910	0.1590%
2911	0.1996%
2912	0.0952%
2913	0.1772%
2914	0.1526%
2915	0.1159%
3001	0.1124%
3002	0.1532%
3003	0.0870%
3004	0.0860%
3005	0.1788%
3007	0.1551%
3008	0.1259%
3009	0.1296%

Property of Cook County Clerk's Office

95163282

UNOFFICIAL COPY

Property of Cook County Clerk's Office

UNOFFICIAL COPY

3010	0.1600%
3011	0.2005%
3012	0.0958%
3013	0.1781%
3014	0.1532%
3015	0.1165%
3101	0.1130%
3102	0.1538%
3103	0.2327%
3104	0.2560%
3105	0.1561%
3106	0.1265%
3107	0.1265%
3108	0.1609%
3109	0.3005%
3110	0.2560%
3111	0.1538%
3112	0.1130%
3201	0.1136%
3202	0.1545%
3203	0.2339%
3204	0.2573%
3205	0.1570%
3206	0.1271%
3207	0.1271%
3208	0.1619%
3209	0.3018%
3210	0.2573%
3211	0.1545%
3212	0.1136%
3301	0.1143%
3302	0.1551%
3303	0.2352%
3304	0.2585%
3305	0.1579%
3306	0.1277%
3307	0.1277%
3308	0.1628%
3309	0.3030%
3310	0.2585%
3311	0.1551%
3312	0.1143%
3401	0.1149%
3402	0.1557%

Property of Cook County Clerk's Office

95363282

UNOFFICIAL COPY

Property of Cook County Clerk's Office

SM50110111

UNOFFICIAL COPY

3403	0.2364%
3404	0.2598%
3405	0.1589%
3406	0.1284%
3407	0.1284%
3408	0.1637%
3409	0.3043%
3410	0.2598%
3411	0.1557%
3412	0.1149%
3501	0.1155%
3502	0.1564%
3503	0.2377%
3504	0.2610%
3505	0.1598%
3506	0.1290%
3507	0.1290%
3508	0.1647%
3509	0.2056%
3510	0.2610%
3511	0.1564%
3512	0.1155%
3601	0.1161%
3602	0.1570%
3603	0.2390%
3604	0.2623%
3605	0.1608%
3606	0.1296%
3607	0.1296%
3608	0.1656%
3609	0.3068%
3610	0.2623%
3611	0.1570%
3612	0.1161%
3701	0.1168%
3702	0.1576%
3703	0.2402%
3704	0.2636%
3705	0.1617%
3706	0.1303%
3707	0.1303%
3708	0.1666%
3709	0.3081%
3710	0.2636%

Property of Cook County Clerk's Office

95363282

UNOFFICIAL COPY

Property of Cook County Clerk's Office

UNOFFICIAL COPY

3711	0.1576%
3712	0.1168%
3801	0.1174%
3802	0.1583%
3803	0.2415%
3804	0.2648%
3805	0.1627%
3806	0.1309%
3807	0.1309%
3808	0.1675%
3809	0.3093%
3810	0.2648%
3811	0.1583%
3812	0.1174%
3901	0.1180%
3902	0.1589%
3903	0.2428%
3904	0.2661%
3905	0.1636%
3906	0.1315%
3907	0.1315%
3908	0.1685%
3909	0.5767%
3911	0.1589%
3912	0.1180%
4001	0.1187%
4002	0.1595%
4003	0.2440%
4004	0.2673%
4005	0.1646%
4006	0.1322%
4007	0.1322%
4008	0.1694%
4009	0.3119%
4010	0.2673%
4011	0.1595%
4012	0.1187%
4101	0.1193%
4102	0.1602%
4103	0.2453%
4104	0.2686%
4105	0.1655%
4106	0.1328%
4107	0.1328%

Property of Cook County Clerk's Office

95363282

UNOFFICIAL COPY

Property of Cook County Clerk's Office

UNOFFICIAL COPY

4108	0.1704%
4109	0.3131%
4110	0.2686%
4111	0.1602%
4112	0.1193%
4201	0.1199%
4202	0.1608%
4203	0.2465%
4204	0.2699%
4205	0.1665%
4206	0.1334%
4207	0.1334%
4208	0.1713%
4209	0.3144%
4210	0.2699%
4211	0.1608%
4212	0.1199%
4301	0.1206%
4302	0.1614%
4303	0.2478%
4304	0.2711%
4305	0.1674%
4306	0.1340%
4307	0.1340%
4308	0.7590%
4311	0.1614%
4312	0.1206%
4401	0.1212%
4402	0.1620%
4403	0.2491%
4404	0.2724%
4405	0.1583%
4406	0.1347%
4407	0.1347%
4408	0.1732%
4409	0.3169%
4410	0.2724%
4411	0.1620%
4412	0.1212%
4501	0.1218%
4502	0.1627%
4503	0.2503%
4504	0.2736%
4505	0.1693%

Property of Cook County Clerk's Office

35063282

UNOFFICIAL COPY

Property of Cook County Clerk's Office

UNOFFICIAL COPY

4506	0.1353%
4507	0.1353%
4508	0.1742%
4509	0.3182%
4510	0.2736%
4511	0.1627%
4512	0.1218%
4601	0.1224%
4602	0.1633%
4603	0.2516%
4604	0.2749%
4605	0.1702%
4606	0.1359%
4607	0.1359%
4608	0.1751%
4609	0.3194%
4610	0.2749%
4611	0.1633%
4612	0.1224%
4701	0.1231%
4702	0.1639%
4703	0.2528%
4704	0.2762%
4705	0.1712%
4706	0.1263%
4707	0.1365%
4708	0.1760%
4709	0.3207%
4710	0.2762%
4711	0.1639%
4712	0.1231%
4801	0.2883%
4803	0.2541%
4804	0.2774%
4805	0.1721%
4806	0.1372%
4807	0.1372%
4808	0.1770%
4809	0.6671%
4811	0.2883%
4901	0.2908%
4903	0.2554%
4904	0.2787%
4905	0.1740%

Property of Cook County Clerk's Office

95063282

UNOFFICIAL COPY

Property of Cook County Clerk's Office

UNOFFICIAL COPY

4906	0.1385%
4907	0.1385%
4908	0.1789%
4909	0.6923%
4911	0.1658%
4912	0.1250%
5001	0.1262%
5002	0.1671%
5003	0.2566%
5004	0.2800%
5005	0.1759%
5006	0.1397%
5007	0.1397%
5008	0.1808%
5009	0.7301%
5011	0.1671%
5012	0.1262%
5101	0.1275%
5102	0.1683%
5103	0.6873%
5105	0.1778%
5106	0.1410%
5107	0.1410%
5108	0.1827%
5109	0.7674%
5111	0.1683%
5112	0.1275%

Total: 100.0000%

Total units: 675

12-MAY-95

95263282

UNOFFICIAL COPY

Property of Cook County Clerk's Office